

VORTAC ILA <b>114.4</b> Chan <b>91</b>	APP CRS <b>323°</b>	Rwy Idg TDZE <b>138</b> Apt Elev <b>141</b>
--	------------------------	---

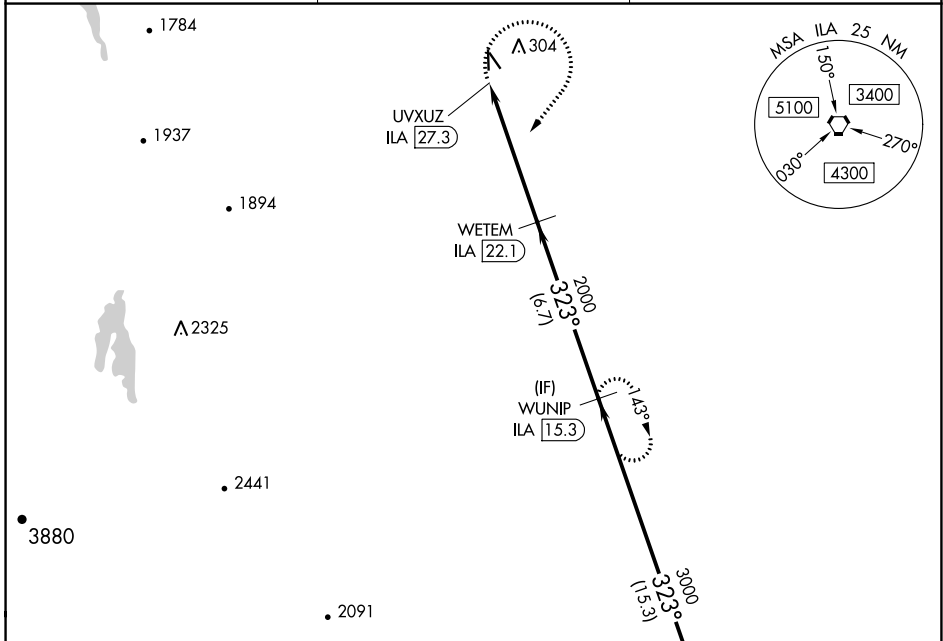
# VOR RWY 34

WILLOWS/GLENN COUNTY (WLW)

**NA** When Oroville Muni altimeter setting not received, procedure NA. DME required. Use Oroville Muni altimeter setting.

MISSED APPROACH: Climbing right turn to 3000 on heading 200° and on ILA VORTAC R-323 to WUNIP/ILA 15.3 DME and hold.

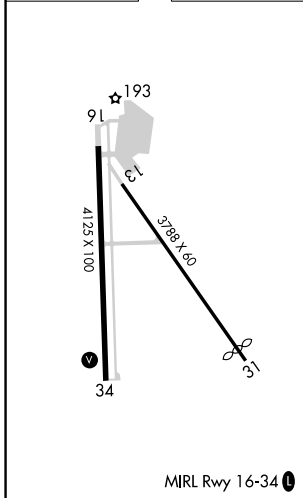
OVE ASOS <b>121.425</b>	OAKLAND CENTER <b>132.2 350.3</b>	UNICOM <b>122.8 (CTAF)</b>
----------------------------	--------------------------------------	-------------------------------



SW-2, 23 MAR 2023 to 20 APR 2023

SW-2, 23 MAR 2023 to 20 APR 2023

ELEV 141	TDZE 138
----------	----------



**DME REQUIRED**

IAF WILLIAMS  
114.4 ILA  
Chan 91

3000 hdg 200°	ILA R-323	WUNIP ILA 15.3	WUNIP ILA 15.3	
UVXUZ ILA 27.3	WETEM ILA 22.1	3000		
0.5 NM		6.7 NM		
3000	323°	2000	3000	
≤ 3.00° TCH 31				
CATEGORY	A	B	C	D
S-34	1000-1 862 (900-1)	1000-1¼ 862 (900-1¼)	1000-2½ 862 (900-2½)	NA
<input checked="" type="checkbox"/> CIRCLING	1000-1¼	859 (900-1¼)	1000-2½ 859 (900-2½)	NA