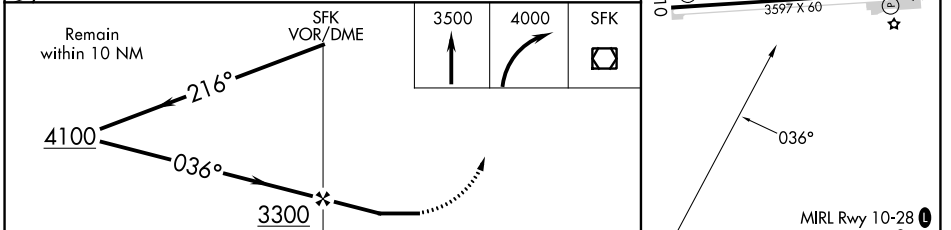
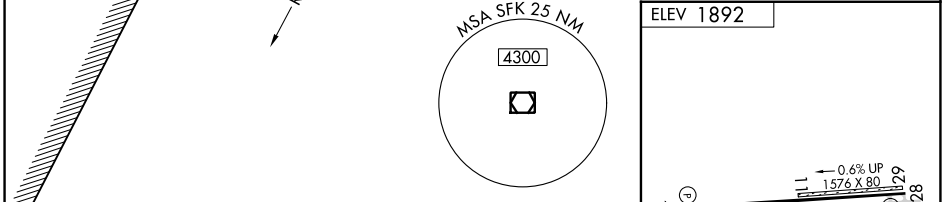
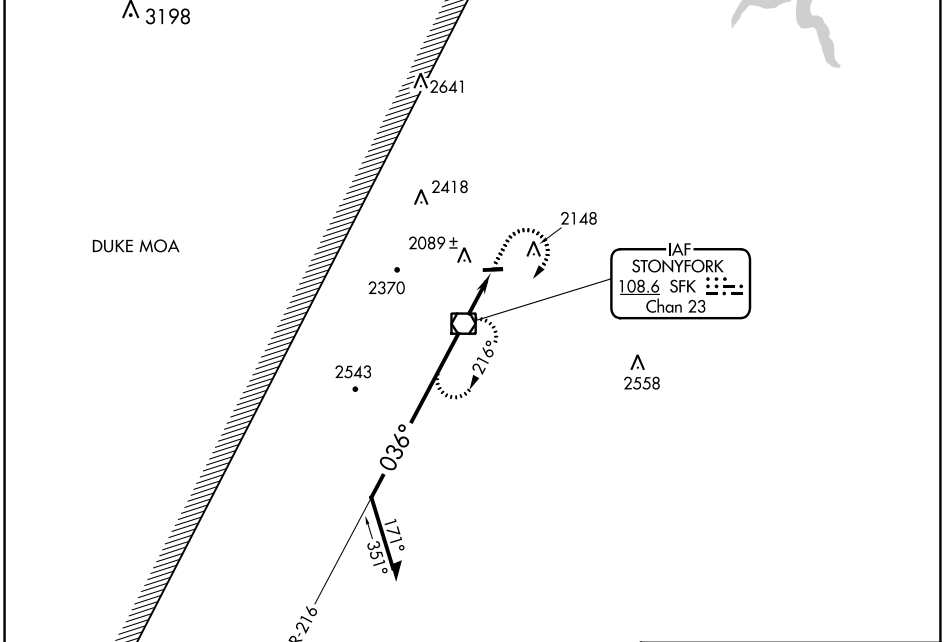


VOR/DME SFK <b>108.6</b> Chan <b>23</b>	APP CRS <b>036°</b>	Rwy Idg TDZE Apt Elev <b>N/A</b> <b>N/A</b> <b>1892</b>
---	------------------------	--

**VOR-A**  
GRAND CANYON RGNL (N38)

**⚠** Circling NA to Rwy 11 and 29. Procedure NA at night. **MISSED APPROACH:** Climb to 3500 then climbing right turn to 4000 direct SFK VOR/DME and hold.

AWOS-3PT <b>120.925</b>	ELMIRA APP CON ★ <b>128.425 257.8</b>	UNICOM <b>122.8</b> (CTAF) <b>📞</b>
----------------------------	--	--



CATEGORY	A	B	C	D	FAF to MAP 2.1 NM					
<b>📍</b> CIRCLING	2940-1¼ 1048 (1100-1¼)	2940-1½ 1048 (1100-1½)	2940-3 1048 (1100-3)	NA	Knots	60	90	120	150	180
					Min:Sec	2:06	1:24	1:03	0:50	0:42

NE-4, 23 MAR 2023 to 20 APR 2023

NE-4, 23 MAR 2023 to 20 APR 2023