

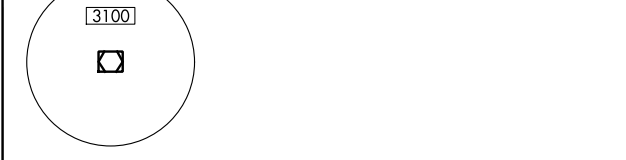
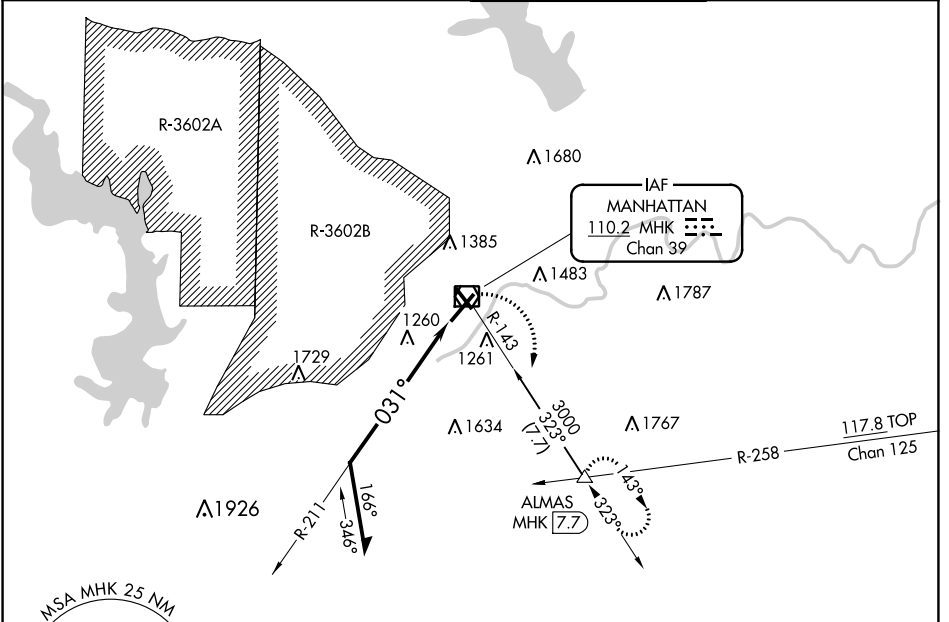
VOR/DME MHK 110.2 Chan 39	APP CRS 031°	Rwy Idg TDZE Apt Elev	7000 1056 1066
--	------------------------	-----------------------------	---

VOR RWY 3

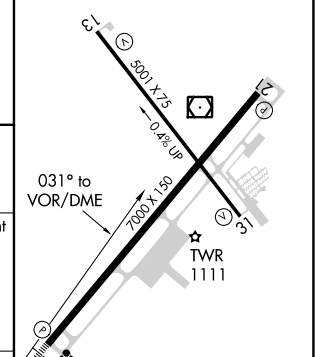
MANHATTAN RGNL (MHK)

<p>⚠ Visibility reduction by helicopters NA. Circling NA west of Rwy 3-21. When local altimeter setting not received, use Marshall AAF altimeter setting and increase all MDA 20 feet. VDP NA with Marshall AAF altimeter setting.</p>	<p>MALSR A5</p>	<p>MISSED APPROACH: Climbing right turn to 3000 via MHK VOR/DME R-143 to ALMAS INT/MHK 7.7 DME and hold.</p>
---	----------------------------	--

ASOS 119.075	MARSHALL GCA * 121.25 254.35	MANHATTAN TOWER * 118.55 (CTAF) 0	GND CON 121.85
------------------------	--	---	--------------------------



ELEV 1066	D TDZE 1056
-----------	--------------------



Remain within 10 NM

3000 ALMAS

MHK R-143

VGSI and descent angles not coincident (VGSI Angle 3.00/TCH 50).

CATEGORY	A	B	C	D
S-3	1820-1	764 (800-1)	1820-1¾ 764 (800-1¾)	1820-2 764 (800-2)
CIRCLING	1820-1 754 (800-1)	1820-1¼ 754 (800-1¼)	1920-2½ 854 (900-2½)	1920-2¾ 854 (900-2¾)

NC-2, 23 MAR 2023 to 20 APR 2023

NC-2, 23 MAR 2023 to 20 APR 2023