

WAAS CH <b>69311</b> <b>W31A</b>	APP CRS <b>313°</b>	Rwy Idg TDZE Apt Elev	<b>6304</b> <b>1114</b> <b>1119</b>
----------------------------------------	------------------------	-----------------------------	-------------------------------------------

# RNAV (GPS) RWY 31

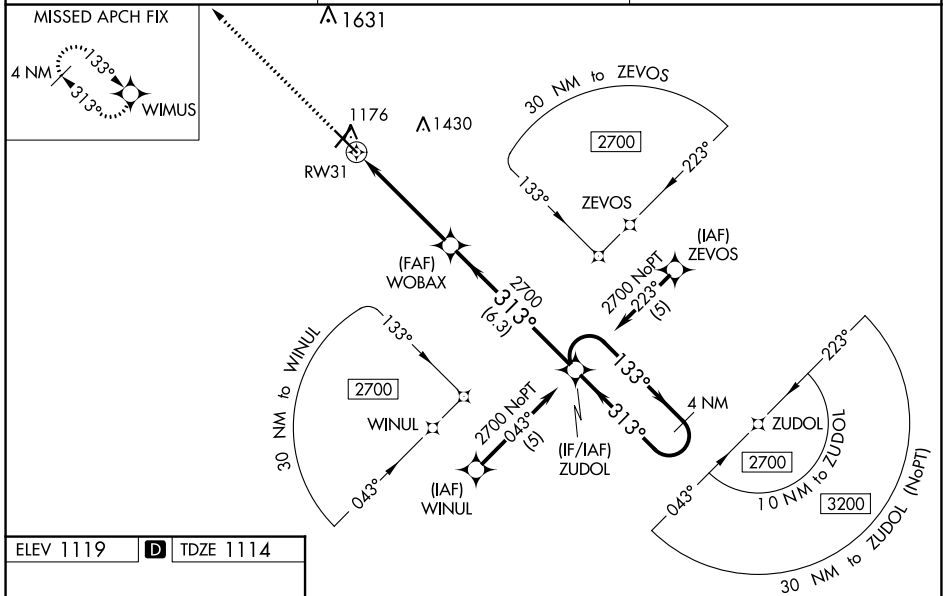
THIEF RIVER FALLS RGNL (TVF)

**⚠** Baro-VNAV and VDP NA when using Crockston altimeter setting. For uncompensated Baro-VNAV systems, LNAV/VNAV NA below -17°C (2°F) or above 54°C (130°F). DME/DME RNP-0.3 NA. When local altimeter setting not received, use Crockston altimeter setting: increase LPV DA to 1446 feet and all visibilities ½ SM; increase LNAV/VNAV DA to 1510 feet and all visibilities ¾ SM; increase all MDAs 100 feet and visibility Cats C and D ¼ SM. For inoperative MALSRS, increase LNAV Cats C/D visibility to 1½ mile. For inoperative MALSRS, when using Crockston altimeter setting, increase LPV all Cats visibility to 1½ mile, LNAV/VNAV all Cats visibility to 1¼ mile, LNAV Cats C/D visibility to 1½ mile.

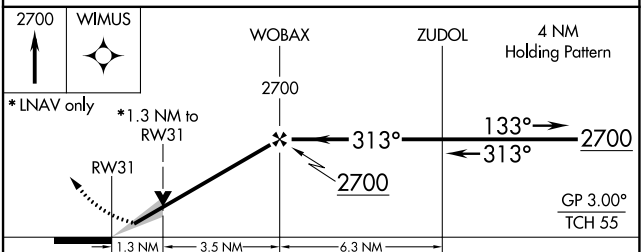
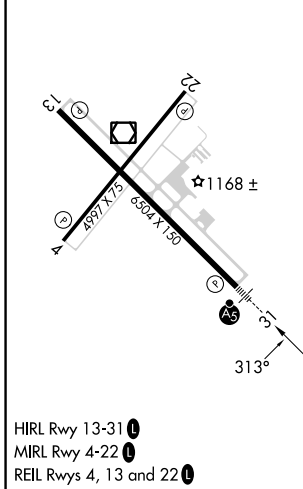


**MISSED APPROACH:**  
Climb to 2700 direct WIMUS and hold.

AWOS-3PT <b>119.025</b>	MINNEAPOLIS CENTER <b>132.15 269.6</b>	UNICOM <b>122.8 (CTAF)</b>
----------------------------	-------------------------------------------	-------------------------------



ELEV 1119	<b>D</b>	TDZE 1114
-----------	----------	-----------



CATEGORY	A	B	C	D
LPV DA	1364-½		250 (300-½)	
LNAV/VNAV DA	1428-½		314 (400-½)	
LNAV MDA	1580-½ 466 (500-½)		1580-1 466 (500-1)	
<b>C</b> CIRCLING	1580-1 461 (500-1)		1820-2 701 (800-2) 1980-2¾ 861 (900-2¾)	

NC-1, 23 MAR 2023 to 20 APR 2023

NC-1, 23 MAR 2023 to 20 APR 2023