

WAAS CH 90301 W07A	APP CRS 066°	Rwy Idg TDZE Apt Elev	5500 515 529
--	------------------------	-----------------------------	---

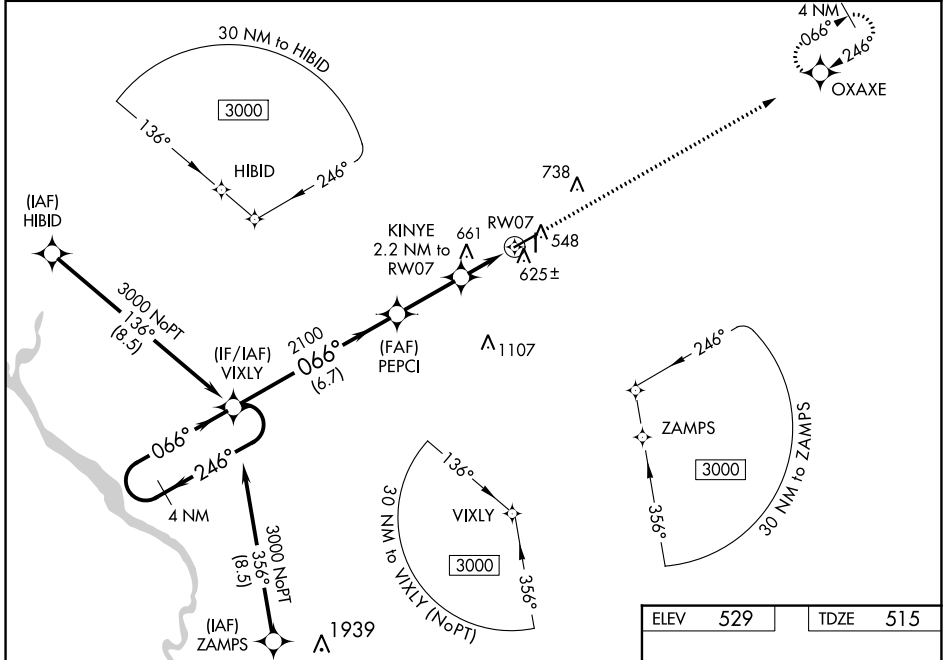
RNAV (GPS) RWY 7

AIKEN RGNL (AIK)

⚠ Baro-VNAV NA when using Augusta Rgnl at Bush Fld altimeter setting. For uncompensated Baro-VNAV systems, LNAV/VNAV NA below -16°C (4°F) or above 40°C (104°F). DME/DME RNP-0.3 NA. VDP NA with Augusta Rgnl at Bush Fld altimeter setting. When local altimeter setting not received, use Augusta Rgnl at Bush Fld altimeter setting: increase LPV all Cats DAs to 890 feet and all Cats visibility 3/8 SM; increase all MDAs 120 feet and LNAV Cats C/D visibility 3/8 SM and Circling Cat C visibility 1/4 SM.

⚠ MISSED APPROACH: Climb to 2500 direct OXAXE and hold.

AWOS-3 118.025	AUGUSTA APP CON * 119.15 284.625	CLNC DEL 126.075	UNICOM 122.8 (CTAF) 0
--------------------------	--	----------------------------	---------------------------------

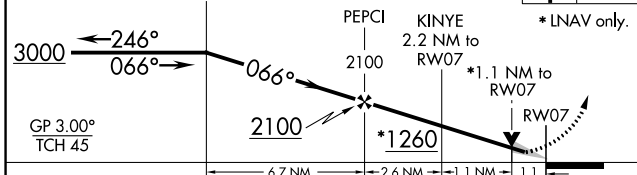


4 NM Holding Pattern VIXLY

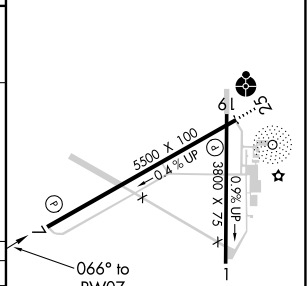
VGSI and RNAV glidepath not coincident (VGSI Angle 3.00/TCH 41).

2500 OXAXE

* LNAV only.



ELEV	529	TDZE	515
------	-----	------	-----



CATEGORY	A	B	C	D
LPV DA		715-3/4	200 (200-3/4)	
LNAV/VNAV DA		786-7/8	271 (300-7/8)	
LNAV MDA	920-1	405 (400-1)	920-1 1/8	405 (400-1 1/8)
CIRCLING	980-1 451 (500-1)	1000-1 471 (500-1)	1140-1 3/4 611 (700-1 3/4)	1420-3 891 (900-3)

REIL Rwy 25
MIRL Rwy 7-25 0

SE-2, 23 MAR 2023 to 20 APR 2023

SE-2, 23 MAR 2023 to 20 APR 2023