

WAAS CH <b>61215</b> <b>W05A</b>	APP CRS <b>050°</b>	Rwy Idg TDZE <b>181</b> Apt Elev <b>182</b>	<b>5501</b>
--	------------------------	---	-------------

# RNAV (GPS) RWY 5

SUMTER (SMS)

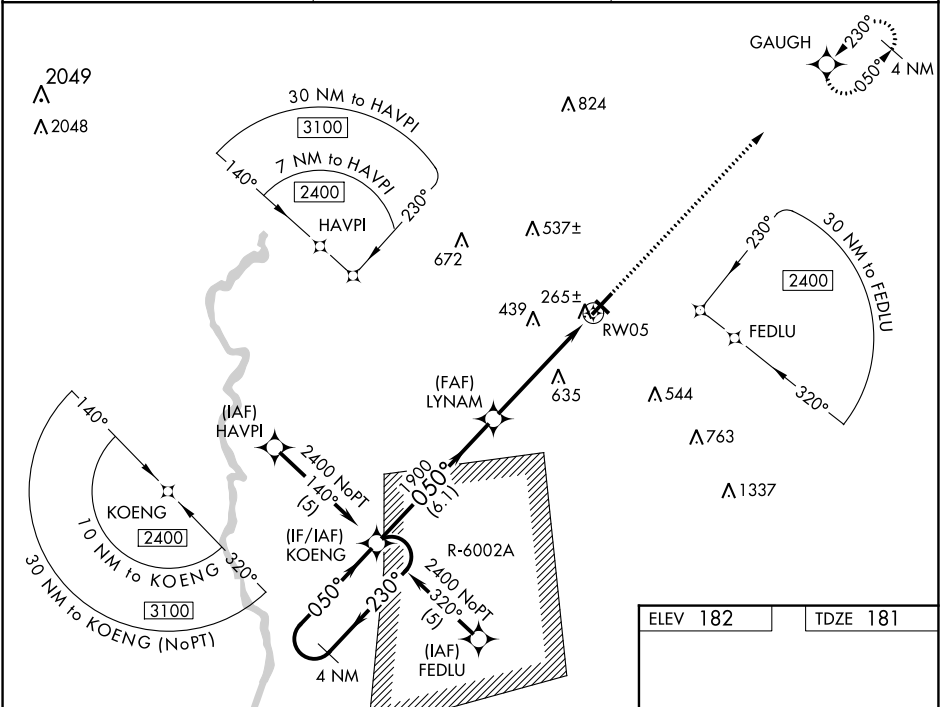
**⚠** For uncompensated Baro-VNAV systems, LNAV/VNAV NA below -1.5°C (5°F) or above 48°C (118°F). DME/DME RNP-0.3 NA. Procedure NA when R-6002A is active. Circling NA to Rwy 14-32. When local altimeter setting not received, use Camden altimeter setting and increase all DA 65 feet and all MDA 80 feet and LPV all Cats, LNAV/VNAV all Cats, LNAV Cats C/D, and Circling Cats C/D visibilities ¼ mile. VDP and Baro/VNAV NA when using Camden altimeter setting.

MISSED APPROACH: Climb to 2400 direct GAUGH and hold.

AWOS-3  
**118.075**

SHAW APP CON\*  
**125.4**

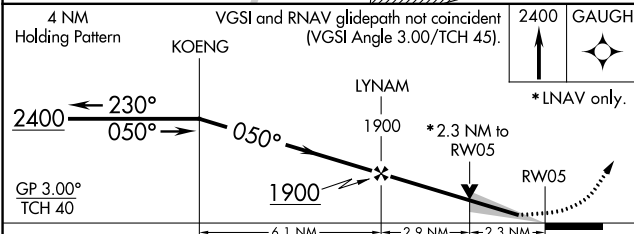
UNICOM  
**122.7 (CTAF)**



SE-2, 23 MAR 2023 to 20 APR 2023

SE-2, 23 MAR 2023 to 20 APR 2023

ELEV 182	TDZE 181
----------	----------



CATEGORY	A	B	C	D
LPV DA		381-3/4	200 (200-3/4)	
LNAV/VNAV DA		535-1/4	354 (400-1/4)	
LNAV MDA	940-1 759 (800-1)	940-1/4 759 (800-1/4)	940-2/4 759 (800-2/4)	940-2/2 759 (800-2/2)
<b>C</b> CIRCLING	940-1 758 (800-1)	940-1/4 758 (800-1/4)	1000-2/2 818 (900-2/2)	1000-2/4 818 (900-2/4)

