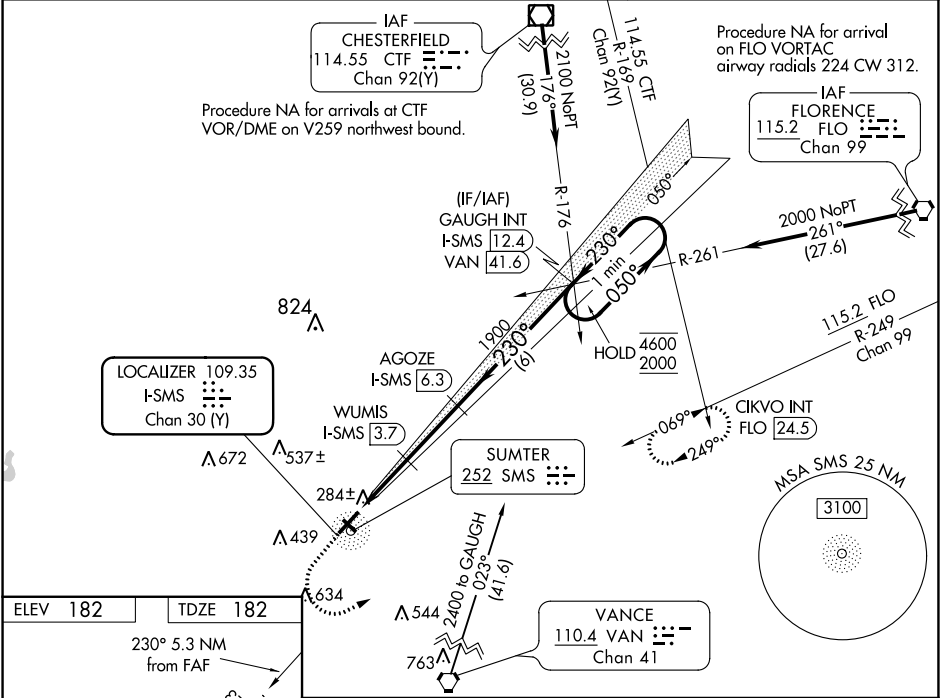


LOC/DME I-SMS 109.35 Chan 30 (Y)	APP CRS 230°	Rwy Idg TDZE 182 Apt Elev 182	5501
--	------------------------	---	-------------

ILS or LOC RWY 23

SUMTER (SMS)

DME required.		ODALS ⊕ : : : :	MISSED APPROACH: Climb to 700 then climbing left turn to 2000 on heading 040° and FLO VORTAC R-249 to CIKVO INT/FLO 24.5 DME and hold.
AWOS-3 118.075	SHAW APP CON ★ 125.4	UNICOM 122.7 (CTAF) 0	



SE-2, 23 MAR 2023 to 20 APR 2023

SE-2, 23 MAR 2023 to 20 APR 2023

ELEV 182	TDZE 182	One Minute Holding Pattern			
230° 5.3 NM from FAF		FLO R-249	CIKVO INT	AGOZE I-SMS 6.3	GAUGH I-SMS 12.4
*LOC only.		WUMIS I-SMS 3.7	1900	050° → 4600	← 230° 2000
MIRL Rwy 5-23 0 REIL Rwy 5 and 23 0		I-SMS 2.1	1900	230°	1900
34°00'N-80°22'W		I-SMS 1.1	1040*	GS 3.00°	TCH 44
CATEGORY	A	B	C	D	
S-ILS 23	382-¾		200 (200-¾)		
S-LOC 23	540-¾	358 (400-¾)	540-⅞	358 (400-⅞)	
CIRCLING	600-1 418 (500-1)	680-1 498 (500-1)	1000-2½ 818 (900-2½)	1000-2¾ 818 (900-2¾)	