

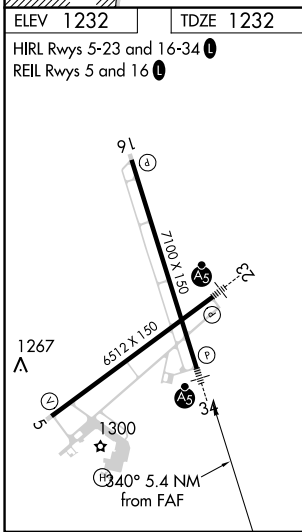
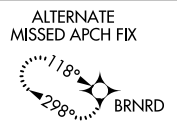
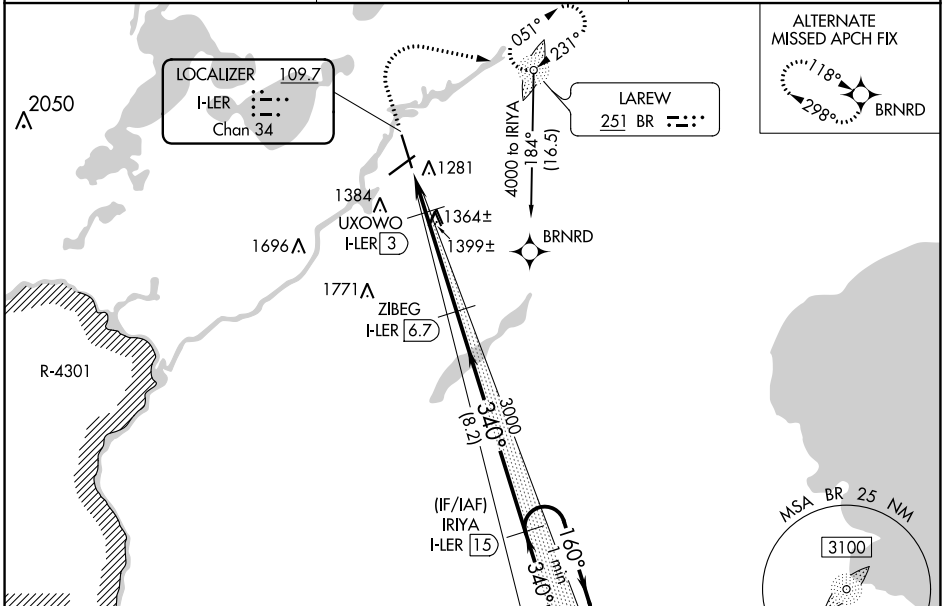
LOC/DME I-LEr	APP CRS	Rwy Idg	7100
109.7	340°	TDZE	1232
Chan 34		ApT Elev	1232

ILS or LOC/DME RWY 34

BRainerd LAKES RGnL (BRD)

DME required. ADF required.		MALSR		MISSED APPROACH: Climb to 1700 then climbing right turn to 4000 direct BR LOM, continue climb-in-hold to 4000.
RNP APCH-GPS. from GOLLF.				
VDP NA with Aikin altimeter setting. When local altimeter setting not received, use Aikin altimeter setting: increase all DA to 1484;				
increase all MDAs 60 feet and visibility S-LOC 34 Cat C/D ¼ SM and visibility Circling Cat D ¼ SM.				

ASOS 126.775	MINNEAPOLIS CENTER 118.05 239.0	UNICOM 122.7(CTAF) 0
------------------------	---	--------------------------------



ELEV 1232	TDZE 1232				
HIRL Rwy 5-23 and 16-34					
REIL Rwy 5 and 16					
1700	4000	BR	ZIBEG I-LEr 6.7	IRIYA I-LEr 15	One Minute Holding Pattern
*LOC only	*I-LEr 1.3	*I-LEr 2.4	UXOWO I-LEr 3	3000	160° → 4000
				1820*	← 340°
				3000	GS 3.00° TCH 46
CATEGORY	A	B	C	D	
S-ILS 34	1432-½		200 (200-½)		
S-LOC 34	1620-½		388 (400-½)		1620-⅝ 388 (400-⅝)
C CIRCLING	1760-1 528 (600-1)		1760-1½ 528 (600-1½)		1860-2 628 (700-2)

NC-1, 23 MAR 2023 to 20 APR 2023

NC-1, 23 MAR 2023 to 20 APR 2023