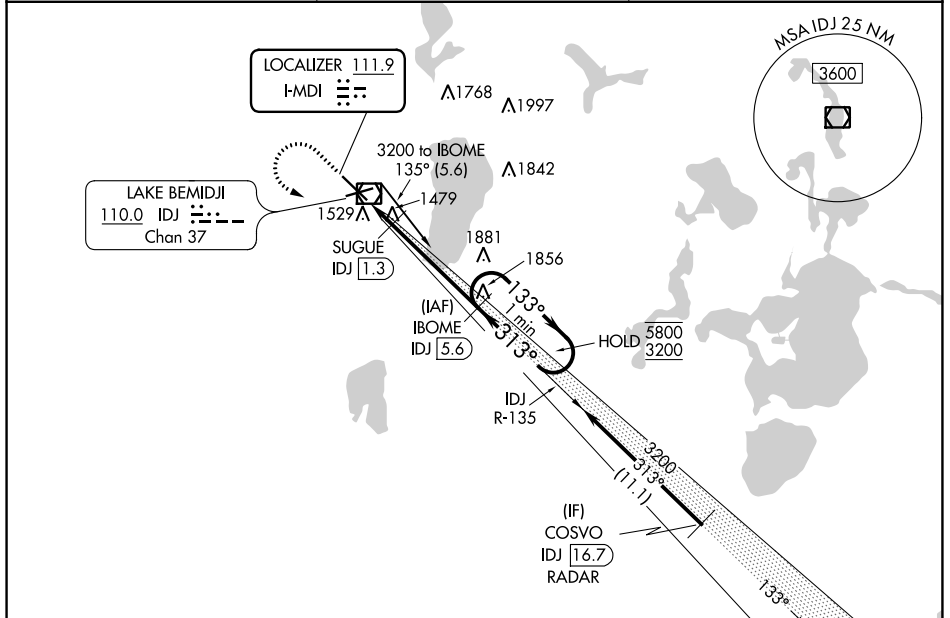


LOC I-MDI 111.9	APP CRS 313°	Rwy ldg 7002
		TDZE 1389
		Apt Elev 1391

ILS or LOC RWY 31

BEMIDJI RGNL (BJI)

DME required. RADAR required for procedure entry.		MALSR 	MISSED APPROACH: Climb to 2400 then climbing left turn to 3200 on heading 100° and IDJ VOR/DME R-135 to IBOME/IDJ 5.6 DME and hold.
Autopilot coupled approach NA below 2126. DME from IDJ VOR/DME. Simultaneous reception of I-MDI and IDJ DME required. For inop ALS, increase S-LOC 31 Cat C/D visibility to 1 SM.			
AWOS-3 119.275	MINNEAPOLIS CENTER 134.75 251.1	UNICOM 122.8 (CTAF) 0	



NC-1, 23 MAR 2023 to 20 APR 2023

NC-1, 23 MAR 2023 to 20 APR 2023

ELEV 1391		TDZE 1389
-----------	--	-----------

HIRL Rwy 13-31 313° 5.6 NM from FAF
 MIRL Rwy 7-25
 REIL Rws 7 and 25
 FAF to MAP 5.6 NM

Knots	60	90	120	150	180
Min:Sec	5:36	3:44	2:48	2:14	1:52

2400	3200	IDJ R-135	IBOME IDJ 5.6	IBOME IDJ 5.6	3200	One Minute Holding Pattern
*LOC only hdg 100°		SUGUE IDJ 1.3		133° → 5800 ← 313° 3200 ↘ 3200		GS 3.00° TCH 45
		1840*				
		-1.3 NM		-4.3 NM		
CATEGORY	A	B	C	D		
S-ILS 31	1589-½		200 (200-½)			
S-LOC 31	1740-½ 351 (400-½)		1740-⅝ 351 (400-⅝)			