

APP CRS	Rwy Idg	N/A
<b>137°</b>	TDZE	N/A
	Apt Elev	<b>49</b>

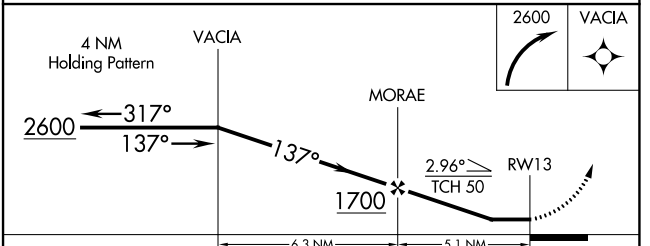
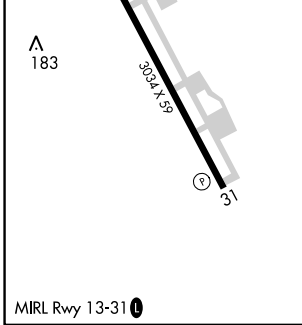
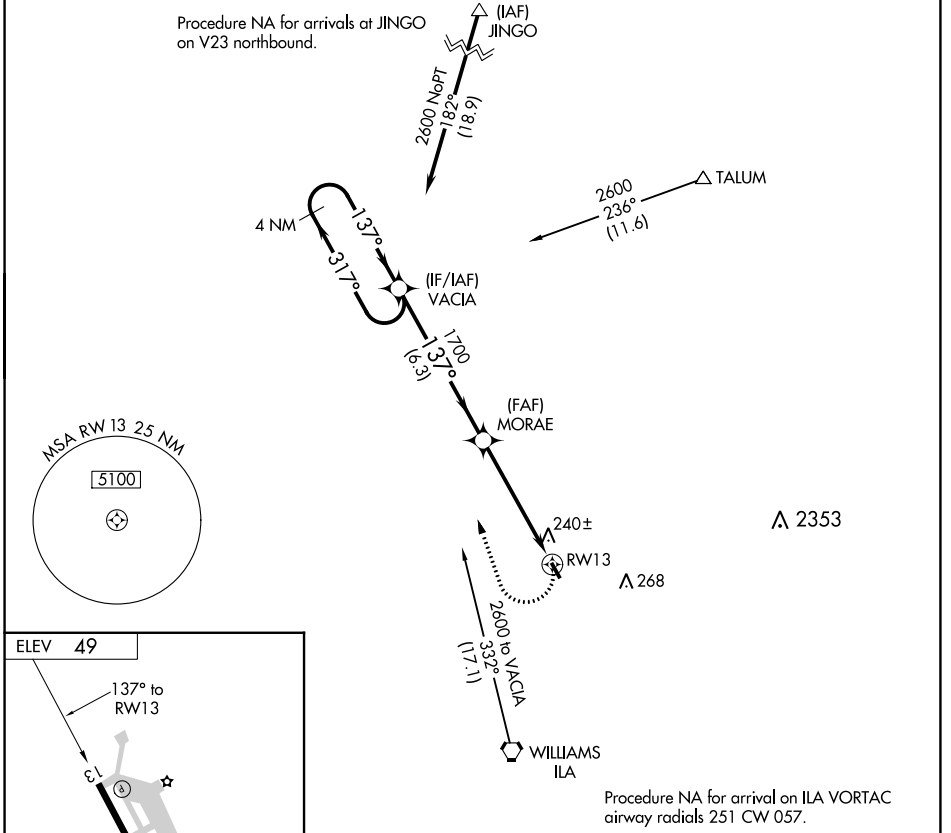
# RNAV (GPS)-B

COLUSA COUNTY (008)

RNP APCH  
 Obtain local altimeter setting on CTAF; when not received, use Sacramento  
 Int'l altimeter setting and increase all MDAs 100 feet and Cat C visibility ½  
 SM. Circling Rwy 31 NA at night.

MISSED APPROACH: Climbing right turn to  
 2600 direct VACIA and hold.

OAKLAND CENTER <b>132.2 350.3</b>	UNICOM <b>122.8 (CTAF) 0</b>
--------------------------------------	---------------------------------



CATEGORY	A	B	C	D
<b>C</b> CIRCLING	600-1	551 (600-1)	620-1½ 571 (600-1½)	NA

SW-2, 23 MAR 2023 to 20 APR 2023

SW-2, 23 MAR 2023 to 20 APR 2023