

WAAS CH <b>65840</b> <b>W31A</b>	APP CRS <b>317°</b>	Rwy Idg <b>3034</b> TDZE <b>49</b> Apt Elev <b>49</b>
--	------------------------	---

# RNAV (GPS) RWY 31

COLUSA COUNTY (008)

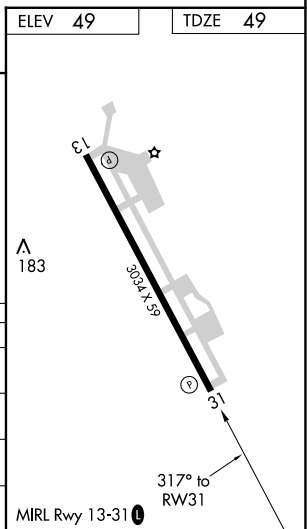
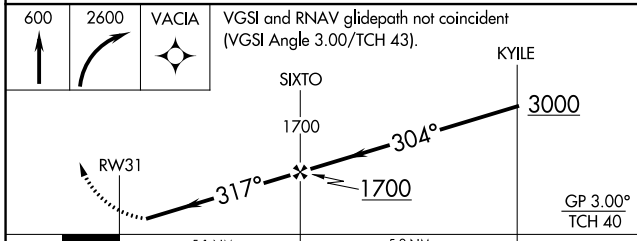
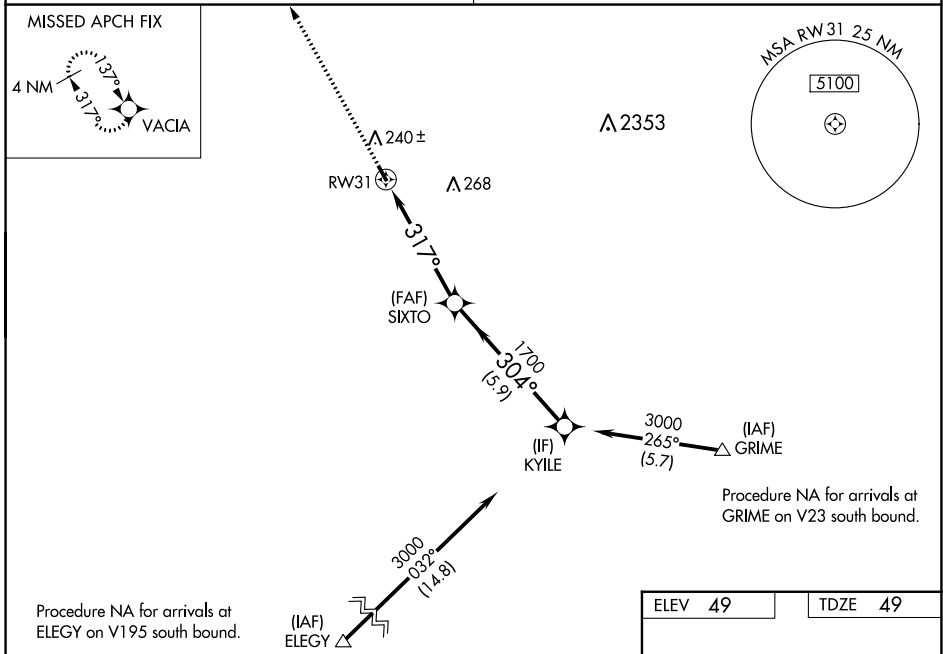
RNP APCH.

▼ For uncompensated Baro-VNAV systems, LNAV/VNAV NA below -15°C (5°F) or above 54°C (130°F). Rwy 31 helicopter visibility reduction below 1 SM NA. Obtain local altimeter setting on CTAF; when not received, use Sacramento Intl altimeter setting: increase LPV DA to 382 feet, increase LNAV/VNAV DA to 550 feet and all visibilities ¼ SM; increase all MDAs 100 feet and LNAV Cat C visibility ¼ SM, Circling Cat C visibility ½ SM. Baro-VNAV NA with Sacramento Intl altimeter setting. Straight-in Rwy 31 NA at night, Circling Rwy 31 NA at night.

MISSED APPROACH: Climb to 600 then climbing right turn to 2600 direct VACIA and hold.

OAKLAND CENTER **132.2 350.3**

UNICOM **122.8 (CTAF) 0**



CATEGORY	A	B	C	D
LPV DA	299-1	250 (300-1)		NA
LNAV/VNAV DA	469-1 1/8	420 (500-1 1/8)		NA
LNAV MDA	500-1	451 (500-1)	500-1 3/8 451 (500-1 3/8)	NA
CIRCLING	600-1	551 (600-1)	620-1 1/2 571 (600-1 1/2)	NA

SW-2, 23 MAR 2023 to 20 APR 2023

SW-2, 23 MAR 2023 to 20 APR 2023