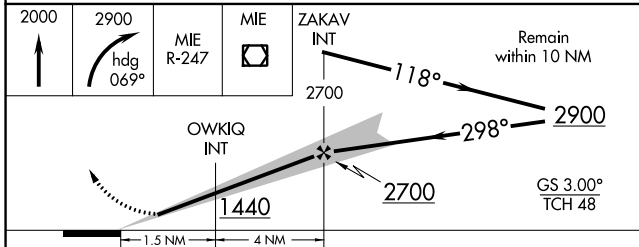
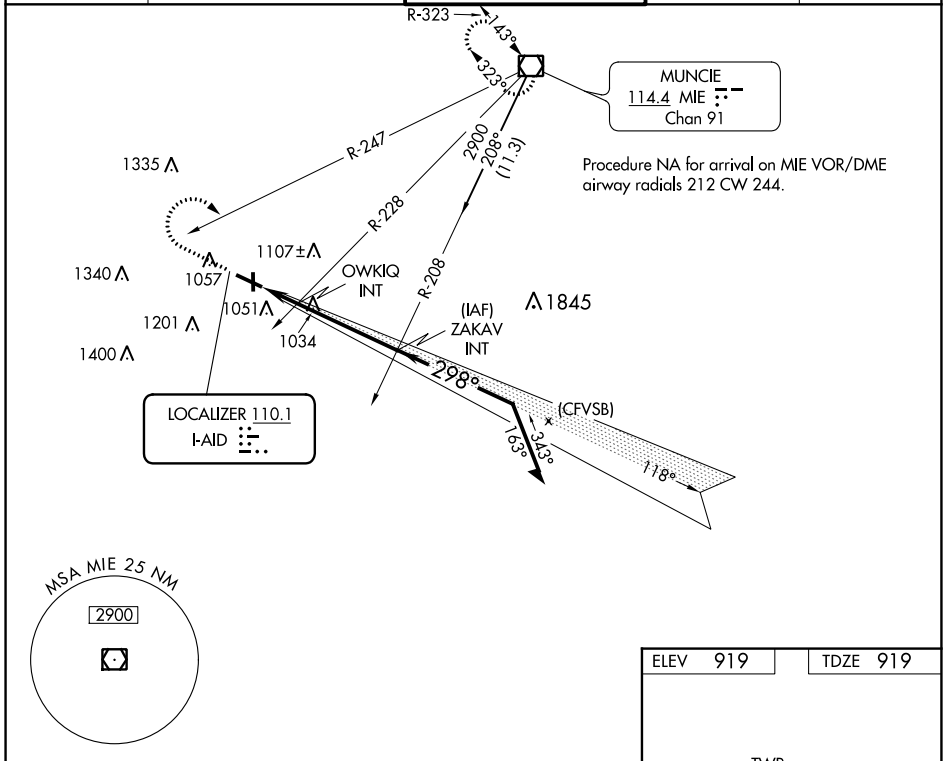


LOC I-AID <b>110.1</b>	APP CRS <b>298°</b>	Rwy Idg TDZE Apt Elev	<b>5320</b> <b>919</b> <b>919</b>
---------------------------	------------------------	-----------------------------	---

# ILS or LOC RWY 30

ANDERSON MUNI-DARLINGTON FLD (AID)

<p>Rwy 30 helicopter visibility reduction below 3/4 SM NA.</p>	MALSF	MISSED APPROACH: Climb to 2000 then climbing right turn to 2900 heading 069° and on MIE VOR/DME R-247 to MIE VOR/DME and hold.		
	AWOS-3 <b>128.55</b>	INDIANAPOLIS APP CON <b>120.65 317.8</b>	ANDERSON TOWER ★ <b>126.0 (CTAF) 0</b>	GND CON <b>121.6</b>



ELEV 919	TDZE 919
----------	----------

REIL Rwy 12  
MIRL Rwys 12-30 and 18-36

FAF to MAP 5.4 NM

Knots	60	90	120	150	180
Min:Sec	5:24	3:36	2:42	2:10	1:48

CATEGORY	A	B	C	D
S-ILS 30	1209-3/4 290 (300-3/4)			
S-LOC 30	1300-3/4	381 (400-3/4)	1300-7/8	381 (400-7/8)
CIRCLING	1360-1 441 (500-1)	1400-1 481 (500-1)	1520-1 3/4 601 (700-1 3/4)	1520-2 601 (700-2)

EC-2, 23 MAR 2023 to 20 APR 2023

EC-2, 23 MAR 2023 to 20 APR 2023