


LOC HBE	APP CRS	Rwy Idg	7372
110.9	236°	TDZE	1145
		Apt Elev	1199

ILS or LOC RWY 24

ARNOLD PALMER RGNL (LBE)

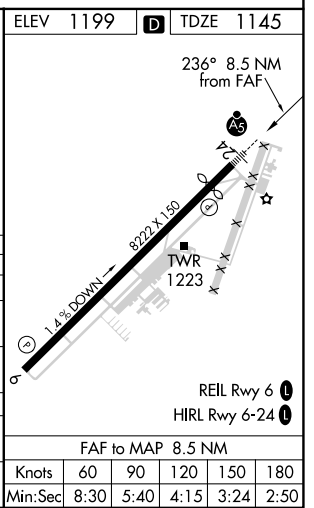
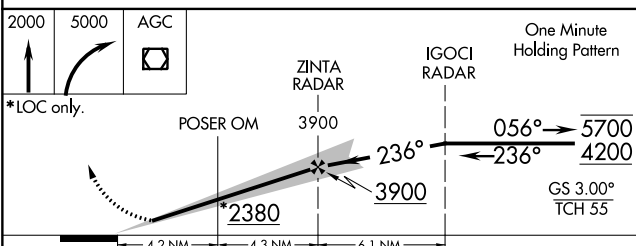
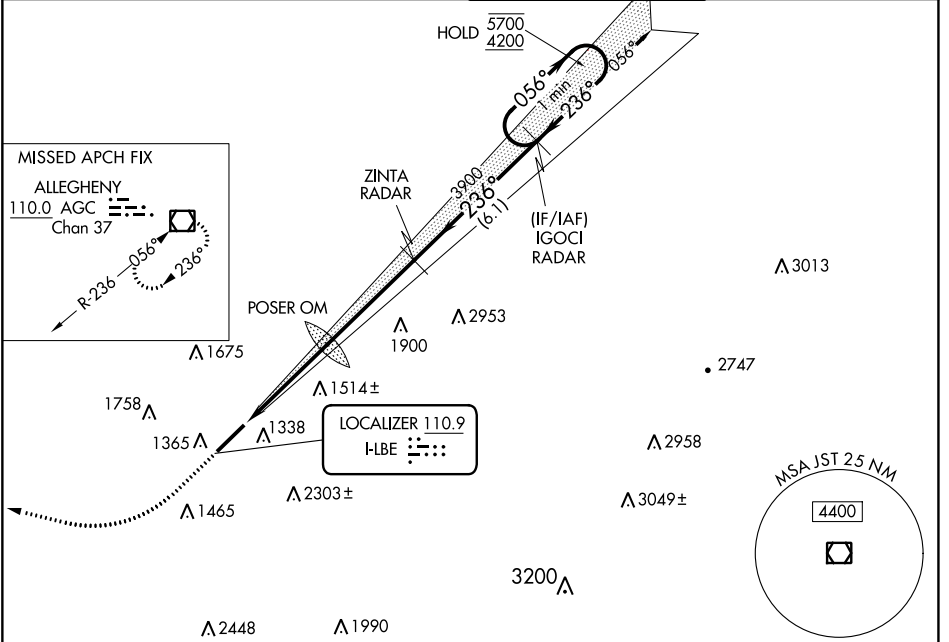
RNAV 1-GPS or RADAR required for procedure entry.
From IGOCI: RNAV 1-GPS required.
RADAR required.

⚠ Circling NA SE of Rwy 6-24. Inop table does not apply to S-LOC 24 Cats C/D.
⚠ For inop ALS, increase POSER OM minimums S-LOC 24 Cats C/D visibility to 1 3/4 SM.

MALSR 

MISSED APPROACH: Climb to 2000 then climbing right turn to 5000 direct AGC VOR/DME and hold.

ATIS 118.375	JOHNSTOWN APP CON * 121.2 299.2	PALMER TOWER * 125.0 (CTAF) 0	GND CON 121.8
------------------------	-------------------------------------------	-----------------------------------------	-------------------------



CATEGORY	A	B	C	D
S-ILS 24		1345-1/2	200 (200-1/2)	
S-LOC 24	2380-3/4 1235 (1200-3/4)	2380-1 1235 (1200-1)	2380-3	1235 (1200-3)
C CIRCLING	2380-1 1/4 1181 (1200-1 1/4)	2380-1 1/2 1181 (1200-1 1/2)	2380-3	1181 (1200-3)
POSER OM MINIMUMS				
S-LOC 24	1760-1/2	615 (600-1/2)	1760-1 3/8	615 (600-1 3/8)
C CIRCLING	1760-1 561 (600-1)	1780-1 581 (600-1)	2060-2 1/2 861 (900-2 1/2)	2060-2 3/4 861 (900-2 3/4)

FAF to MAP 8.5 NM					
Knots	60	90	120	150	180
Min:Sec	8:30	5:40	4:15	3:24	2:50

NE-4, 23 MAR 2023 to 20 APR 2023

NE-4, 23 MAR 2023 to 20 APR 2023