

WAAS CH <b>86830</b> <b>W02B</b>	APP CRS <b>015°</b>	Rwy Idg TDZE <b>754</b> Apt Elev <b>759</b>
----------------------------------------	------------------------	---------------------------------------------------

# RNAV (GPS) RWY 2L

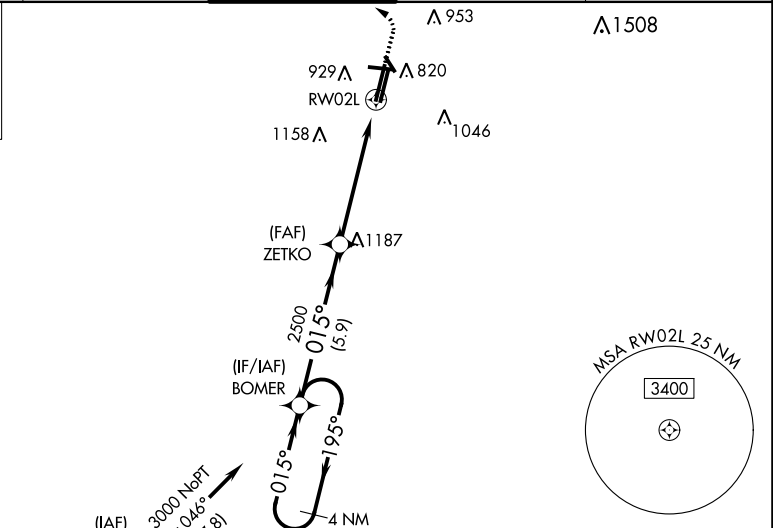
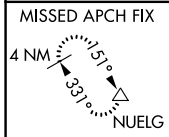
DUPAGE (DPA)

**⚠** For uncompensated Baro-VNAV systems, LNAV/VNAV NA below -16°C (4°F) or above 54°C (130°F). DME/DME RNP-0.3 NA. When local altimeter setting not received, use Aurora altimeter setting: increase LPV DA to 991 feet, LNAV/VNAV DA to 1151 feet and visibility LNAV/VNAV all Cats ½ SM; increase all MDA 40 feet and visibility LNAV Cat C/D ¼ SM and Circling Cat C/D ¼ SM. For inop MALS, increase LNAV/VNAV all Cats visibility to 1½ mile and LNAV Cat C/D visibility to 1½ mile. For inop MALS when using Aurora altimeter setting, increase LNAV/VNAV all Cats visibility to 1½ and LNAV Cat C/D visibility to 1½ mile. VDP and Baro-VNAV NA when using Aurora altimeter setting. Circling Rwy 15, 28, 33 NA at night.

**MALS**

**MISSED APPROACH:** Climb to 1300 then climbing left turn to 3000 direct NUELG and hold.

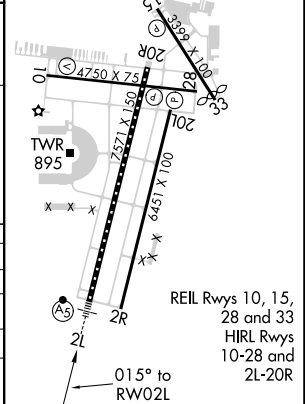
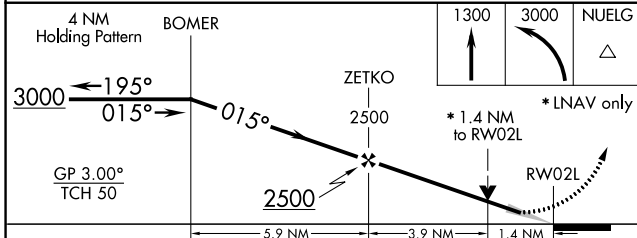
ATIS <b>132.075</b>	CHICAGO APP CON <b>133.5 349.0</b>	DUPAGE TOWER <b>120.9 257.8</b>	GND CON <b>121.8</b>	CLNC DEL <b>119.75</b>
------------------------	---------------------------------------	------------------------------------	-------------------------	---------------------------



PLANO  $\Delta$  088° (8.1) 3000

Procedure NA for arrival on JOT VOR/DME airway radials 314 CW 328.

ELEV 759	TDZE 754
MIRL Rwy 15-33 and 2R-20L	
TDZ/CL Rwy 2L	
RLS Rwy 10	



CATEGORY	A	B	C	D
LPV DA		954-½	200 (200-½)	
LNAV/VNAV DA		1114-¾	360 (400-¾)	
LNAV MDA	1260-½	506 (600-½)	1260-1	506 (600-1)
CIRCLING	1260-1 501 (600-1)	1360-1 601 (700-1)	1460-2 701 (800-2)	1460-2¼ 701 (800-2¼)

EC-3, 23 MAR 2023 to 20 APR 2023

EC-3, 23 MAR 2023 to 20 APR 2023