

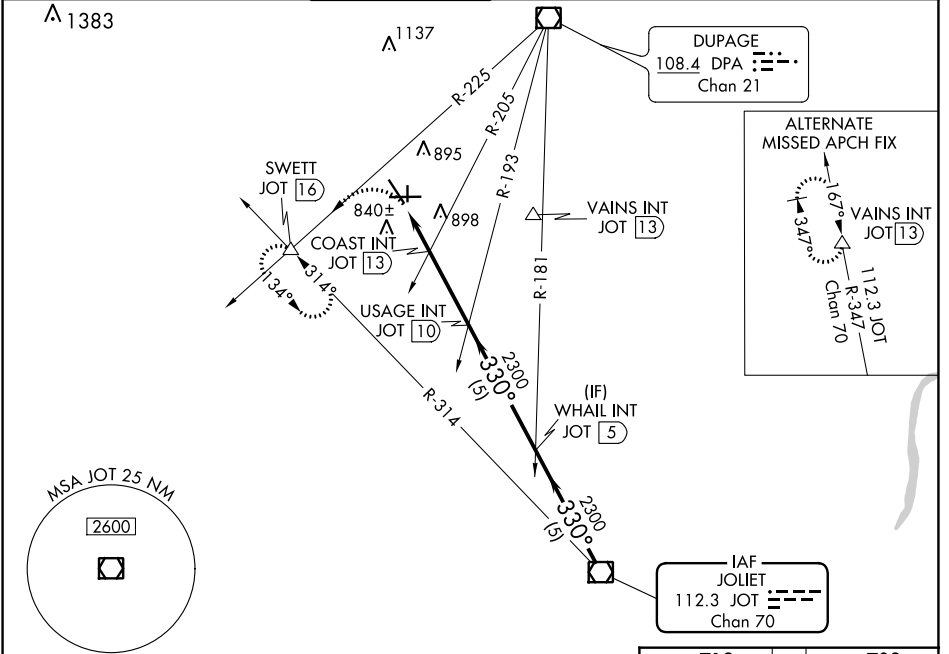
VOR/DME JOT 112.3 Chan 70	APP CRS 330°	Rwy Idg 3198 TDZE 703 Apt Elev 712
---	------------------------	---

VOR RWY 36

AURORA MUNI (A.R.R.)

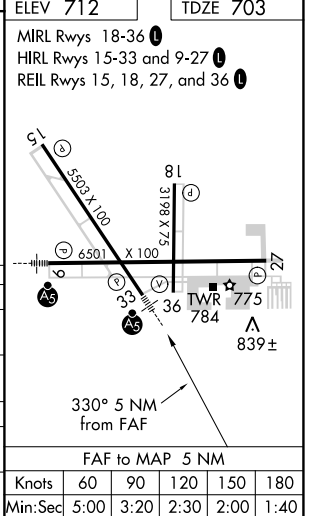
MISSED APPROACH: Climbing left turn to 3000 on DPA VOR/DME R-225 to SWETT INT/16 DME and hold.

ATIS 125.85	CHICAGO APP CON 133.5 349.0	AURORA TOWER* 120.6 (CTAF) 0	GND CON 121.7	CLNC DEL 121.7 (When tower closed)	UNICOM 122.95 123.5
-----------------------	---------------------------------------	--	-------------------------	---	-------------------------------



3000	SWETT △	USAGE INT JOT (10)	WHAIL INT JOT (5)	JOT VOR/DME
DPA R-225				
	COAST INT JOT (13)			
	JOT (13.7)			
	JOT (15)			
	1.3	0.7	3 NM	5 NM
			2300	330° 2300
			2300	
			2.96°	TCH 45

CATEGORY	A	B	C	D
S-36	1360-1 657 (700-1)		1360-1¾ 657 (700-1¾)	1360-2 657 (700-2)
C CIRCLING	1360-1 648 (700-1)		1360-1¾ 648 (700-1¾)	1360-2 648 (700-2)
COAST FIX MINIMUMS (DUAL VOR RECEIVERS or DME REQUIRED)				
S-36	1160-1 457 (500-1)		1160-1¼ 457 (500-¼)	1160-1½ 457 (500-½)
C CIRCLING	1200-1 488 (500-1)		1300-1½ 588 (600-½)	1320-2 608 (700-2)



EC-3, 23 MAR 2023 to 20 APR 2023

EC-3, 23 MAR 2023 to 20 APR 2023