

WAAS CH 72941 W15A	APP CRS 148°	Rwy ldg TDZE Apt Elev	5503 712 712
--	------------------------	-----------------------------	---

RNAV (GPS) RWY 15

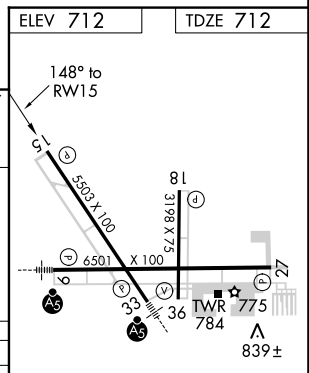
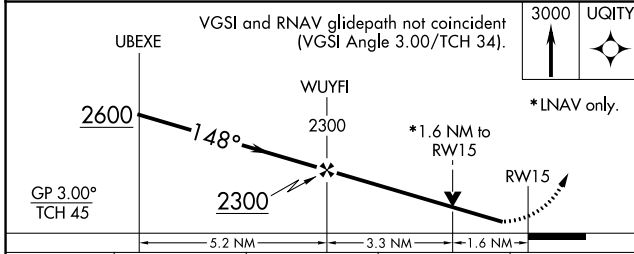
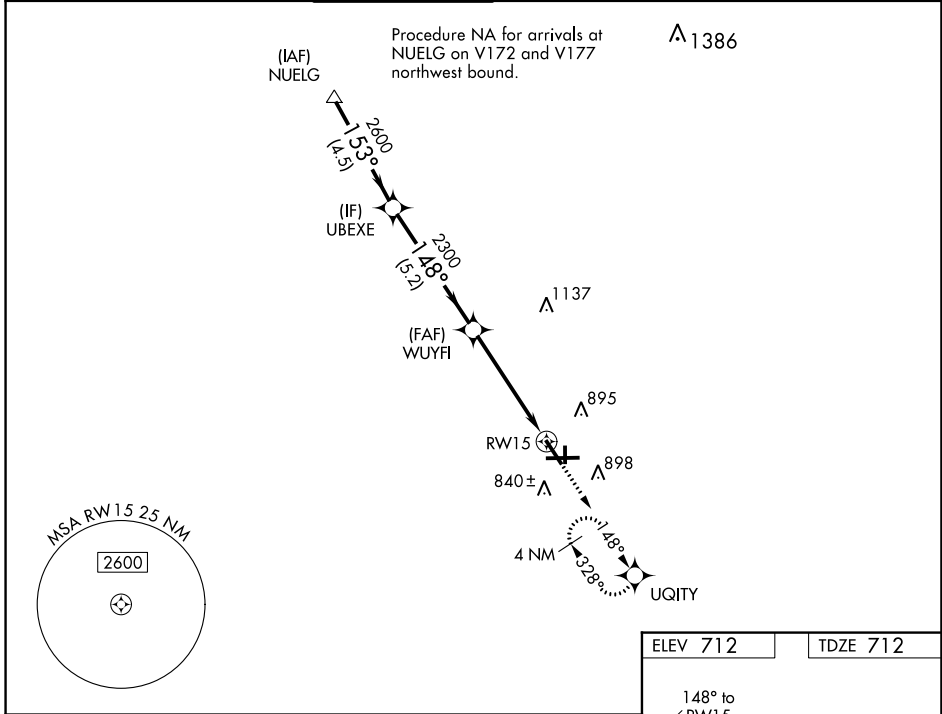
AURORA MUNI (A.R.R.)

RNP APCH - GPS.

▼ For uncompensated Baro-VNAV systems, LNAV/VNAV NA below -20°C or above 54°C.
Rwy 15 helicopter visibility reduction below ¼ SM NA.

MISSED APPROACH: Climb to 3000 direct UQITY and hold, continue climb-in-hold to 3000.

ATIS 125.85	CHICAGO APP CON 133.5 349.0	AURORA TOWER* 120.6 (CTAF) 0	GND CON 121.7	CLNC DEL 121.7 (When tower closed)	UNICOM 122.95 123.5
-----------------------	---------------------------------------	---	-------------------------	---	-------------------------------



CATEGORY	A	B	C	D
LPV DA		962-¾	250 (300-¾)	
LNAV/VNAV DA		962-¾	250 (300-¾)	
LNAV MDA	1260-1	548 (600-1)	1260-1½	548 (600-1½)
CIRCLING	1260-1	548 (600-1)	1300-1⅞	1320-2
			588 (600-1½)	608 (700-2)

HIRL Rwy 15-33 and 9-27 0

MIRL Rwy 18-36 0

REIL Rwy 15, 18, 27, and 36 0

EC-3, 23 MAR 2023 to 20 APR 2023

EC-3, 23 MAR 2023 to 20 APR 2023