

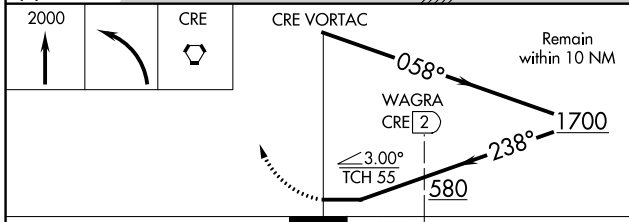
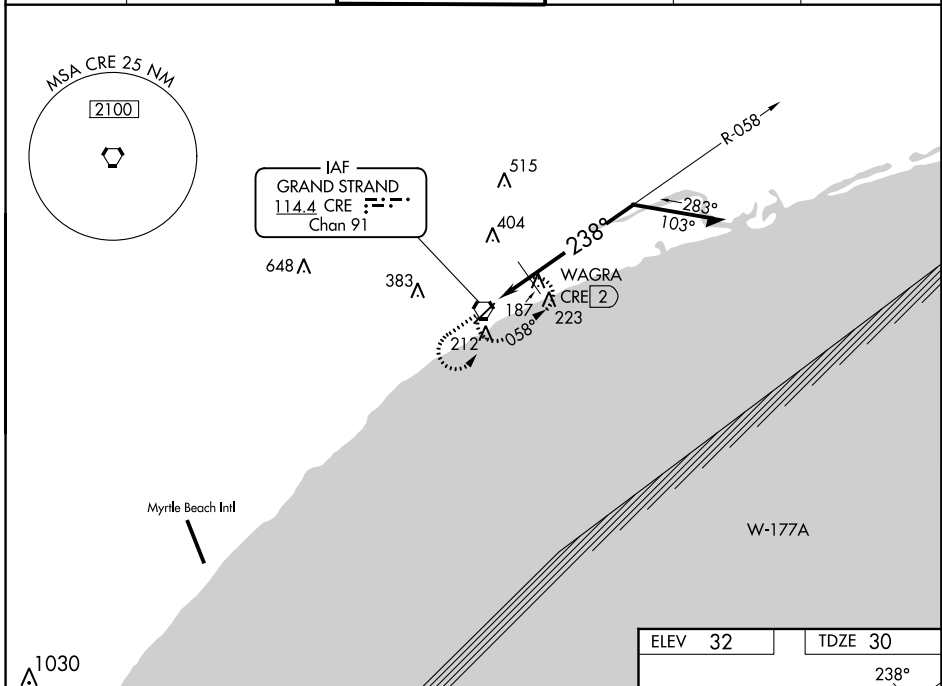
VORTAC CRE 114.4 Chan 91	APP CRS 238°	Rwy Idg 5997 TDZE 30 Apt Elev 32
--	------------------------	---

VOR RWY 23

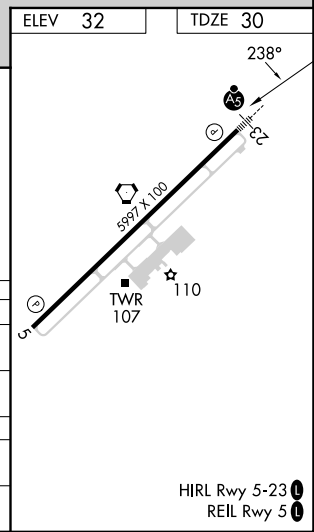
GRAND STRAND (CRE)

<p>Rwy 23 helicopter visibility reduction below 3/4 SM NA. For inop ALS, increase S-23 Cats A/B visibility to 1 SM.</p>	<p>MALSR</p>	<p>MISSED APPROACH: Climb to 2000 then left turn direct CRE VORTAC and hold.</p>			
			<p>ATIS 119.625</p>	<p>MYRTLE BEACH APP CON* 119.2 350.3</p>	<p>STRAND TOWER* 124.6 (CTAF) 257.6</p>

ATIS 119.625	MYRTLE BEACH APP CON* 119.2 350.3	STRAND TOWER* 124.6 (CTAF) 257.6	GND CON 121.8 257.6	CLNC DEL 121.8	UNICOM 122.95
------------------------	---	--	-------------------------------	--------------------------	-------------------------



CATEGORY	A	B	C	D
S-23	580-3/4	550 (600-3/4)	580-1 1/8	550 (600-1 1/8)
CIRCLING	580-1	548 (600-1)	720-2 688 (700-2)	720-2 1/4 688 (700-2 1/4)
WAGRA FIX MINIMUMS				
S-23	480-3/4	450 (500-3/4)	480-7/8	450 (500-7/8)
CIRCLING	520-1	488 (500-1)	720-2 688 (700-2)	720-2 1/4 688 (700-2 1/4)



SE-2, 23 MAR 2023 to 20 APR 2023

SE-2, 23 MAR 2023 to 20 APR 2023