

TOP ALTITUDE:
3000

EC-1, 23 MAR 2023 to 20 APR 2023

TAKEOFF MINIMUMS

Rwy 18, 36: NA - Environmental.
Rwys 9L/R, 27L/R: Standard.

ATIS 125.025
CLNC DEL 118.25
GND CON 1121.9
PONTIAC TOWER *
120.5 (CTAF)
DETROIT DEP CON
132.35 284.0

NOTE: RADAR required.
NOTE: DME required.
NOTE: For use by non-RNAV equipped aircraft only.

SPECIAL INSTRUCTIONS:

When using this departure, file the appropriate depicted departure fix and route. Aircraft over HARWL must file FL220 and below. PROP AIRCRAFT departing KDTW Rwy 21L/R and 22L/R westbound, cross DXO 3.5 DME at or above 2500 MSL. Aircraft landing Cleveland (CLE) must file MAARS transition. Turbojet departures at/above 10000, maintain 280K until advised by ATC. If unable, advise ATC prior to departure.

(NARRATIVE ON FOLLOWING PAGE)

NOTE: Chart not to scale.

PISTN
N42°53.54'
W83°08.19'
L-28



DUNKS
N42°25.64'
W84°11.65'
L-28, H-10

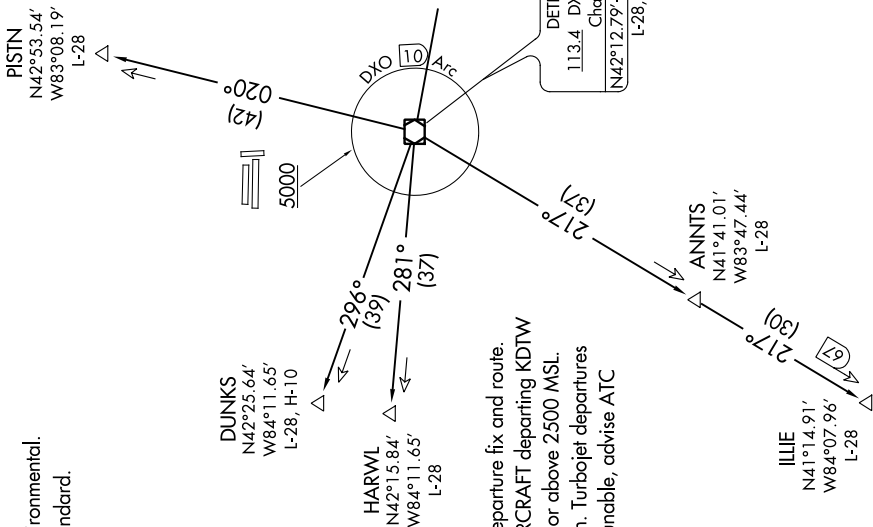
HARWL
N42°15.84'
W84°11.65'
L-28

MAARS
N42°05.30'
W82°29.17'
L-30

DETROIT
113.4 DXO
Chan 81
N42°12.79'-W83°22.00'
L-28, H-10

ANNTS
N41°41.01'
W83°47.44'
L-28

ILLIE
N41°14.91'
W84°07.96'
L-28



EC-1, 23 MAR 2023 to 20 APR 2023