

WAAS CH 90227 W27A	APP CRS 270°	Rwy Idg TDZE Apt Elev	4977 40 40
--	------------------------	-----------------------------	---------------------------------------

RNAV (GPS) RWY 27

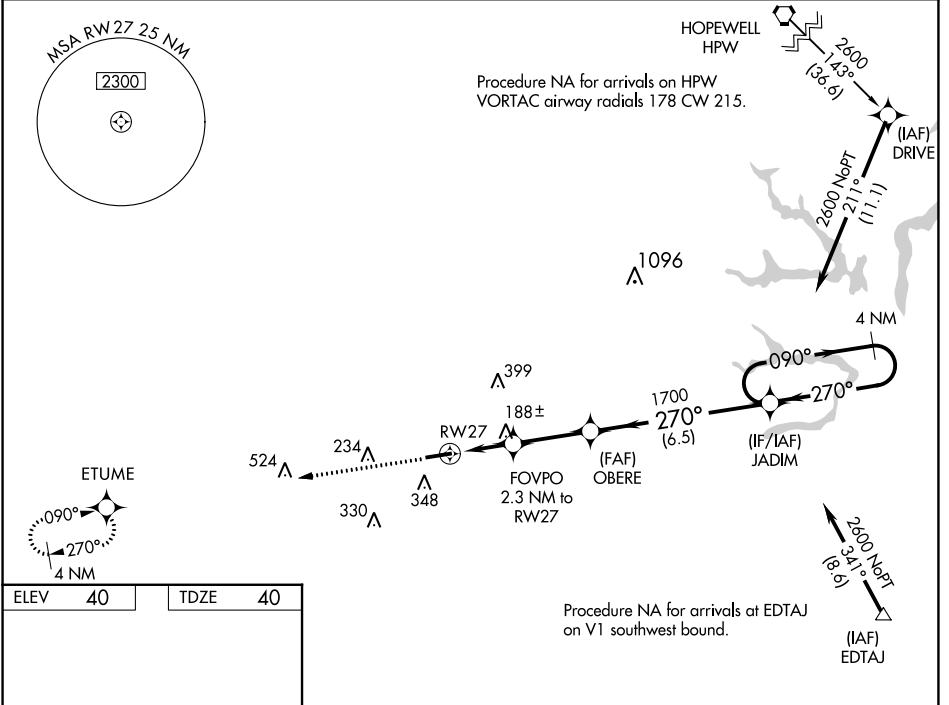
FRANKLIN RGNL (FKN)

RNP APCH.

⚠ For uncompensated Baro-VNAV systems, LNAV/VNAV NA below -15°C or above 54°C. Baro-VNAV and VDP NA when using Suffolk altimeter setting. When local altimeter setting not received, use Suffolk altimeter setting: increase LPV DA to 404 feet and visibility all Cats 1/8 SM; increase LNAV/VNAV DA to 392 feet and visibility all Cats 1/4 SM; increase all MDA 40 feet and LNAV Cats C/D visibility 1/8 SM. Rwy 27 helicopter visibility reduction below 3/4 SM NA.

MISSED APPROACH: Climb to 2600 direct ETUME and hold.

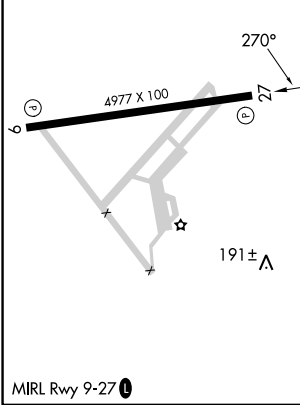
AWOS-3PT 124.675	NORFOLK APP CON 127.9 269.425	UNICOM 122.8 (CTAF) 0
----------------------------	---	---------------------------------



NE-3, 23 MAR 2023 to 20 APR 2023

NE-3, 23 MAR 2023 to 20 APR 2023

ELEV 40	TDZE 40
---------	---------



2600	ETUME	* LNAV only.	4 NM Holding Pattern
↑	✦	FOVPO 2.3 NM to RWY 27	JADIM
		* 1.1 NM to RWY 27	2600
		* 800	GP 3.00° TCH 40
		1700	2600
		1700	2600
		1.1 NM 1.2 NM 2.8 NM 6.5 NM	
CATEGORY	A	B	C
LPV DA	366-1 326 (400-1 1/8)		
LNAV/VNAV DA	354-1 314 (400-1)		
LNAV MDA	440-1	400 (400-1)	440-1 400 (400-1 1/8)