

HI-ILS or LOC Z RWY 30

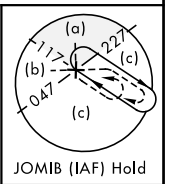
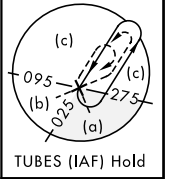
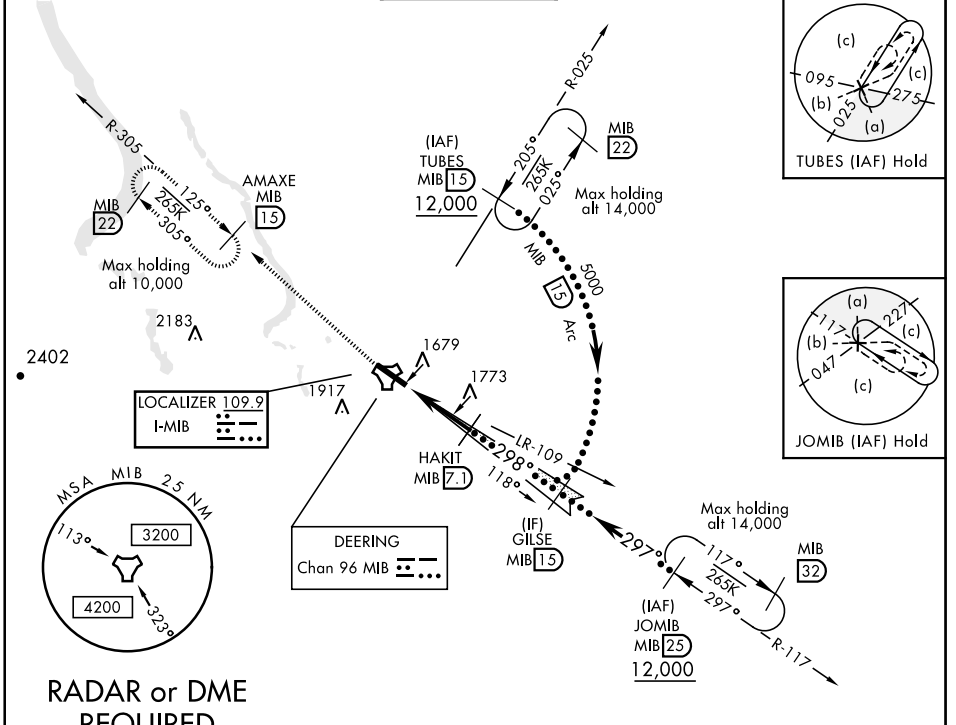
LOC I-MIB 109.9	APCH CRS 298°	Rwy Ldg 13,198 TDZE 1646 Arprt Elev 1666	JAL-5013 [USAF]	MINOT AFB (KMIB)
---------------------------	-------------------------	---	-----------------	------------------

* When ALS inop, increase CAT CDE RVR to 40 and vis to 3/4 mile.
 ** When ALS inop, increase CAT CDE RVR to 60, vis to 1 1/2 mile,
 *** Circling Not Authorized N of Rwy 12-30.



MISSED APPROACH: Climb to 5000 via MIB TACAN R-305 direct AMAXE and hold.

ATIS ★ 278.8	MINOT APP CON 119.6 363.8	MINOT TOWER ★ 120.65 253.5	GND CON 134.0 275.8	CLNC DEL 326.2
------------------------	-------------------------------------	--------------------------------------	-------------------------------	--------------------------

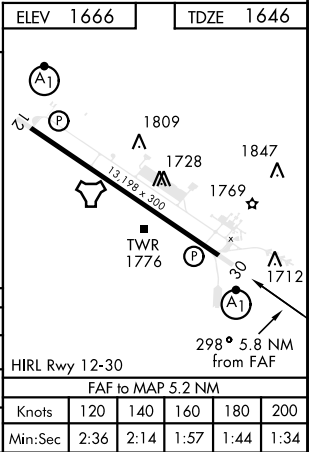
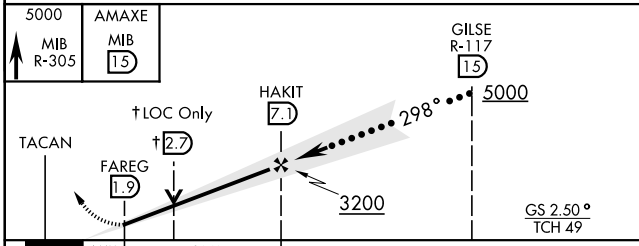


NC-1, 23 MAR 2023 to 20 APR 2023

NC-1, 23 MAR 2023 to 20 APR 2023

RADAR or DME REQUIRED

EMERG SAFE ALT 100 NM 4700



CATEGORY	C	D	E
S-ILS 30*	1846/24	200 (200-1/2)	
S-LOC 30**	2040/35	394 (400-3/4)	
*** CIRCLING	2180-1 1/2 514 (600-1 1/2)	2220-2 554 (600-2)	

FAF to MAP 5.2 NM					
Knots	120	140	160	180	200
Min:Sec	2:36	2:14	1:57	1:44	1:34

HI-ILS or LOC Z RWY 30