

# COPTER TACAN 125°

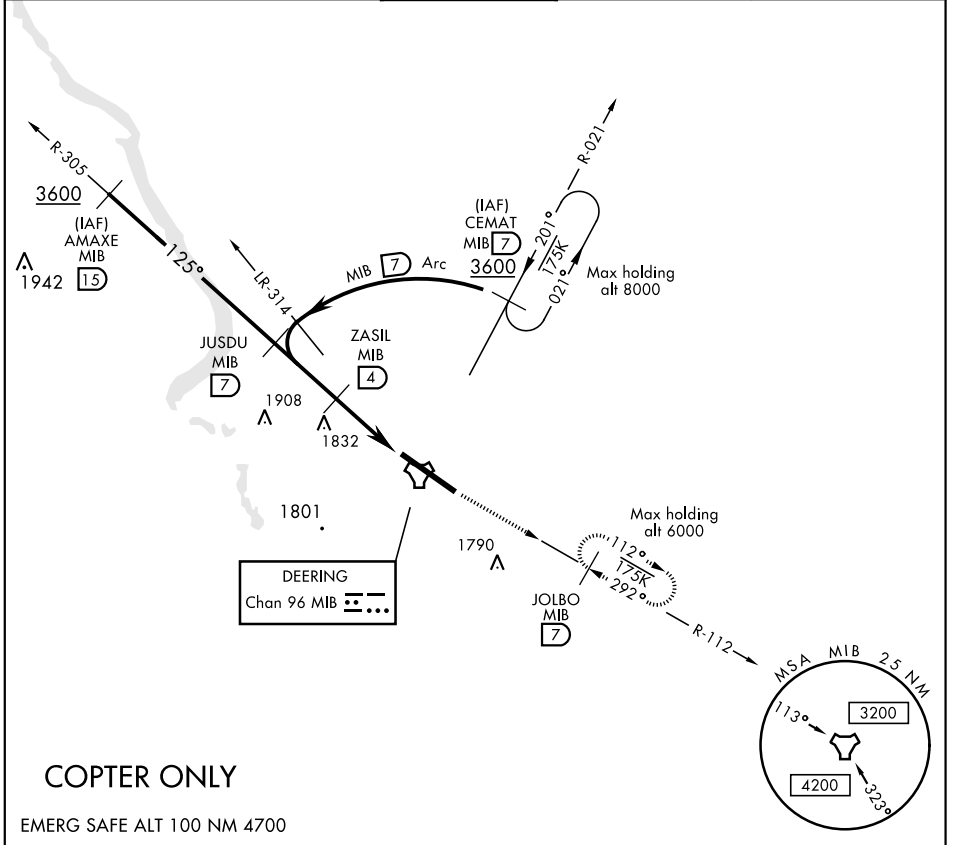
TACAN MIB Chan <b>96</b>	APCH CRS <b>125°</b>	Rwy Ldg <b>13,198</b> TDZE <b>1666</b> Arprt Elev <b>1666</b>	AL-5013 [USAF]	MINOT AFB (KMIB)
-----------------------------	-------------------------	---	----------------	------------------

\* When ALS inop, increase RVR to 28 and vis to ½ mile.

ALS-1 

MISSED APPROACH: Climb to 3600 via MIB TACAN R-112 direct JOLBO and hold.

ATIS ★ <b>278.8</b>	MINOT APP CON <b>119.6 363.8</b>	MINOT TOWER ★ <b>120.65 253.5</b>	GND CON <b>134.0 275.8</b>	CLNC DEL <b>326.2</b>
------------------------	-------------------------------------	--------------------------------------	-------------------------------	--------------------------



## COPTER ONLY

EMERG SAFE ALT 100 NM 4700

JUSDU R-305 MIB 7	ZASIL MIB 4	TACAN	3600 MIB R-112	JOLBO MIB 7	ELEV 1666	TDZE 1666
3000	2600	2.3	1.1			
2.65° TCH 47	2.9 NM		.2			
CATEGORY	COPTER					
H-125°*	2100/12	434	(500-¼)			
				HIRL Rwy 12-30		

# COPTER TACAN 125°

NC-1, 23 MAR 2023 to 20 APR 2023

NC-1, 23 MAR 2023 to 20 APR 2023