

COPTER RNAV (GPS) 004

APCH CRS 004°	Rwy Idg THRE	5996
	Arprt Elev 177	N/A

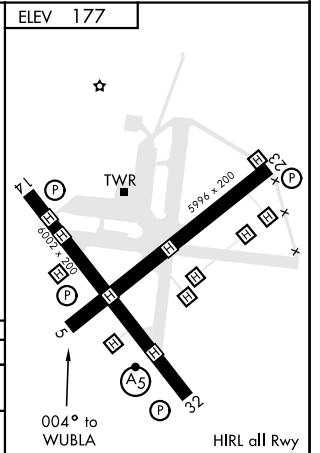
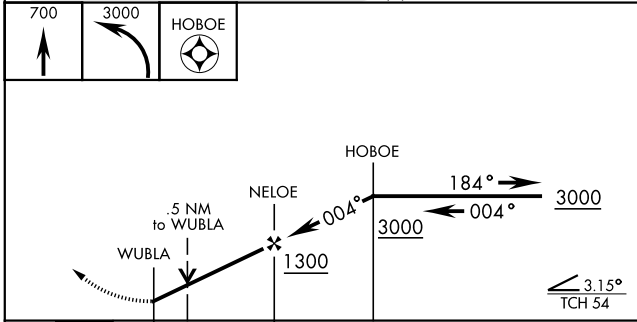
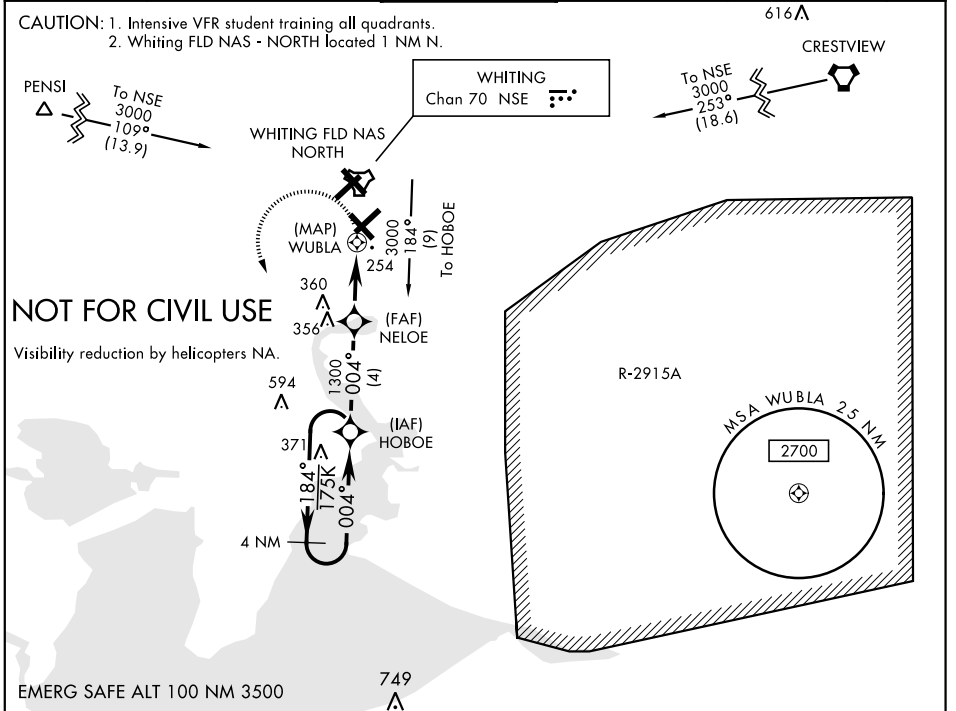
AL-1909 [USN]

WHITING FLD NAS - SOUTH (KNDZ)

<p>▼ RNP APCH Max procedure airspeed 90 KIAS. Arm approach mode 30 NM from airport.</p>	<p>MISSED APPROACH: Climb to 700, then climbing left turn to 3000 direct HOBEO and hold. Continue climb-in-hold to 3000. Contact Pensacola Approach Control.</p>
---	--

<p>ATIS ★ 273.575</p>	<p>PENSACOLA APP CON 124.85 385.4</p>	<p>SOUTH WHITING TOWER ★ 121.4 348.675</p>	<p>GND CON 317.65</p>	<p>CLNC DEL 355.6</p>	<p>ASR/ PAR</p>
----------------------------------	--	---	----------------------------------	----------------------------------	-----------------

CAUTION: 1. Intensive VFR student training all quadrants.
2. Whiting FLD NAS - NORTH located 1 NM N.



CATEGORY	COPTER		
LNVA MDA	520-1	343	(400-1)
CIRCLING	NOT AUTHORIZED		

COPTER RNAV (GPS) 004

SE-3, 23 MAR 2023 to 20 APR 2023

SE-3, 23 MAR 2023 to 20 APR 2023