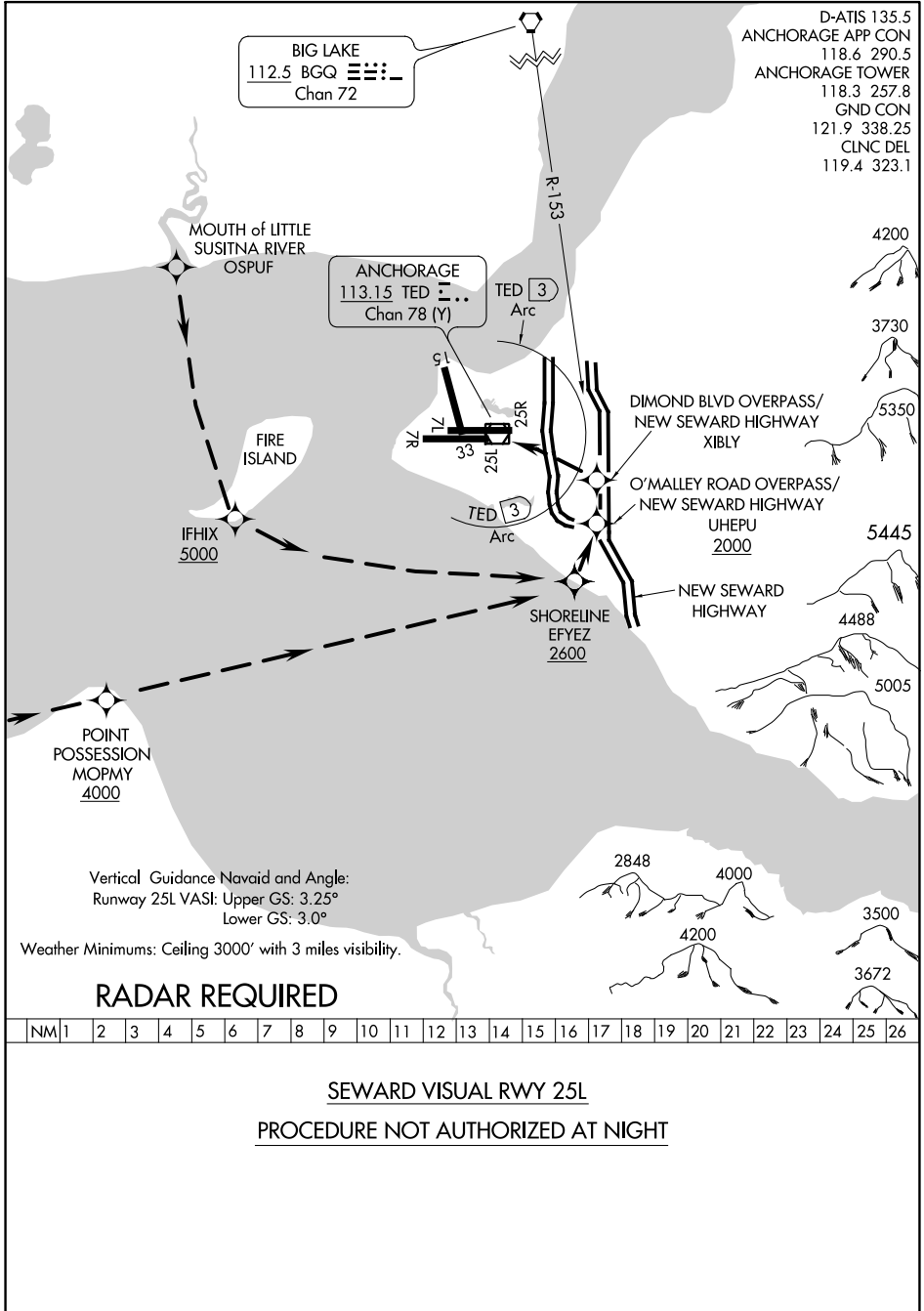


SEWARD VISUAL RWY 25L

TED STEVENS ANCHORAGE INTL (ANC) (PANC)
AL-1500 (FAA) ANCHORAGE, ALASKA



RADAR REQUIRED

SEWARD VISUAL RWY 25L

PROCEDURE NOT AUTHORIZED AT NIGHT

SEWARD VISUAL RWY 25L

Amdt 1 09FEB12

61°10'N-150°00'W

ANCHORAGE, ALASKA

TED STEVENS ANCHORAGE INTL (ANC) (PANC)

AK, 23 FEB 2023 to 20 APR 2023

AK, 23 FEB 2023 to 20 APR 2023