

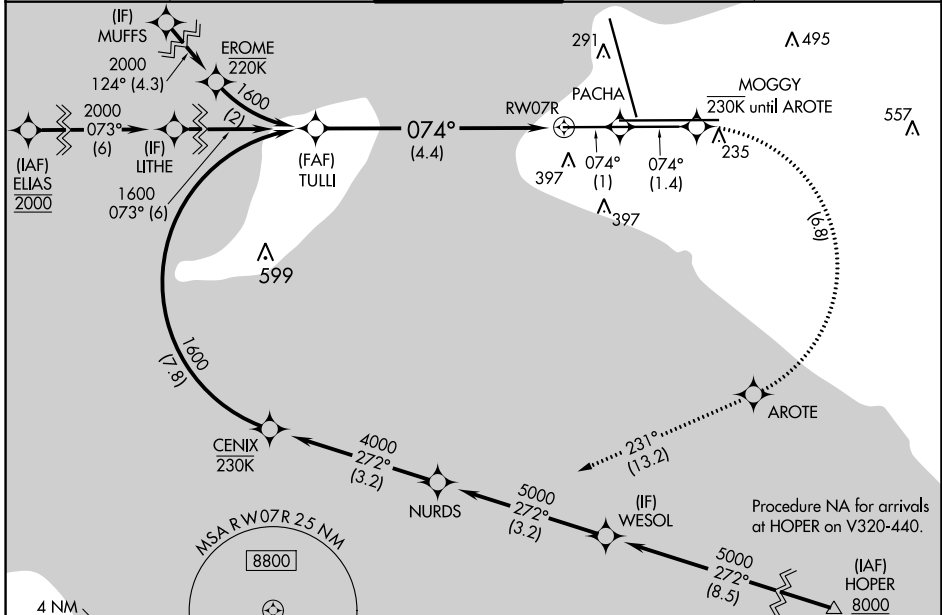
RNAV (RNP) Z RWY 7R

TED STEVENS ANCHORAGE INTL (ANC) (PANC)

APP CRS	Rwy Idg	12400
074°	TDZE	132
	Apt Elev	151

RNP AR APCH, RF required.		ALSF-2	MISSED APPROACH: Climb to 3000 on the missed approach route to JUKEP and hold.
<p>▼ Missed approach requires RNP less than 1.0. For uncompensated Baro-VNAV systems, procedure NA below -18°C (0°F) or above 54°C (130°F). For inop ALS, increase RNP 0.30 all Cats visibility to 1½ SM.</p>			

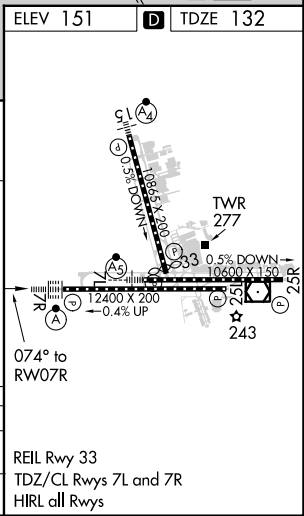
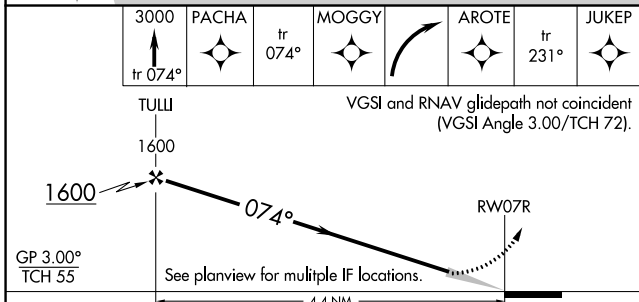
D-ATIS	ANCHORAGE APP CON	ANCHORAGE TOWER	GND CON	CLNC DEL
135.5	118.6 290.5	118.3 257.8	121.9 338.25	119.4 323.1



AK, 23 FEB 2023 to 20 APR 2023

AK, 23 FEB 2023 to 20 APR 2023

ELEV 151	D	TDZE 132
----------	----------	----------



CATEGORY	A	B	C	D
RNP 0.30 DA	562/50 430 (500-1)			

AUTHORIZATION REQUIRED