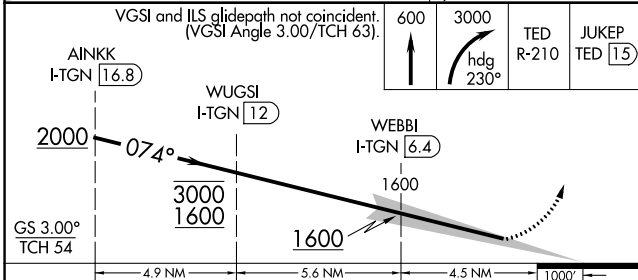
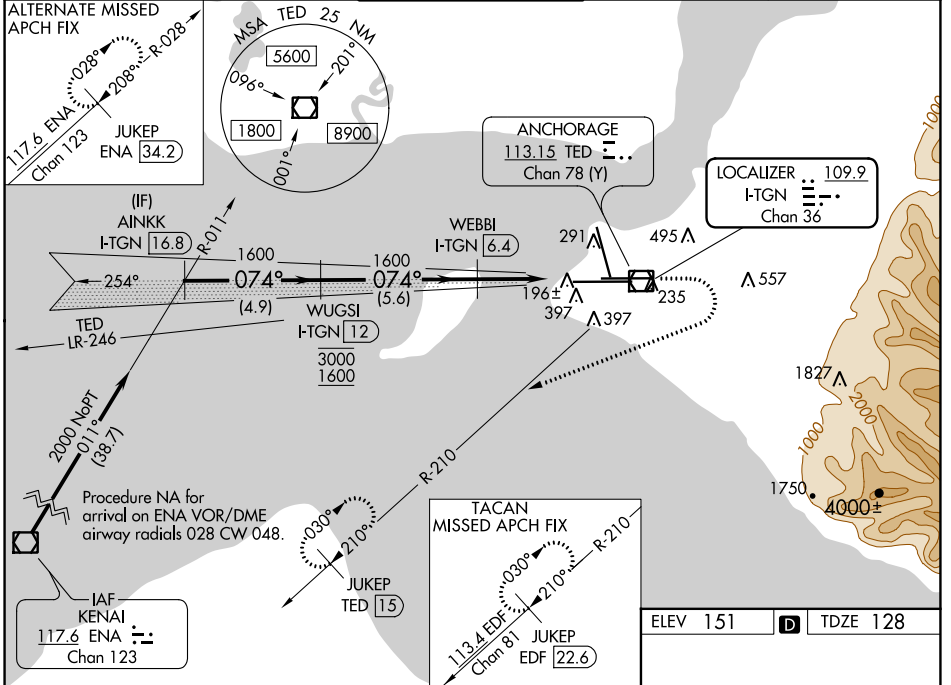


LOC/DME I-TGN 109.9 Chan 36	APP CRS 074°	Rwy Idg 10600 TDZE 128 Apt Elev 151
-------------------------------------------------	------------------------	----------------------------------------------------------------

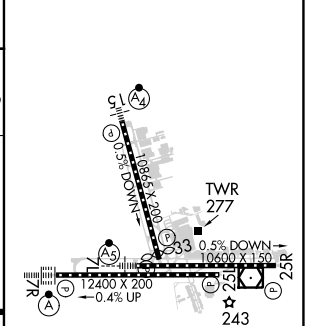
ILS RWY 7L (SA CAT I & II)

TED STEVENS ANCHORAGE INTL (ANC)(PANC)

DME Required ▼ SA CAT I: Requires specific OPSPEC, MSPEC, or LOA approval and use of HUD to DH. ▲ SA CAT II: Reduced lighting: requires specific OPSPEC, MSPEC, or LOA approval and use of autoland or HUD to touchdown.		MALSR 	MISSED APPROACH: Climb to 600 then climbing right turn to 3000 on heading 230° and TED VOR/DME R-210 to JUKEP/TED 15 DME and hold. (TACAN aircraft climb to 600 then climbing right turn to 3000 on heading 230° on EDF TACAN R-210 to JUKEP/EDF 22.6 DME and hold).		
D-ATIS 135.5	ANCHORAGE APP CON 118.6 290.5	ANCHORAGE TOWER 118.3 257.8	GND CON 121.9 338.25	CLNC DEL 119.4 323.1	



ELEV 151	D	TDZE 128
----------	---	----------



CATEGORY	A	B	C	D
S-ILS 7L	SA CAT I RA 158/14 150 DA 278			
S-ILS 7L	SA CAT II RA 108/12 100 DA 228			

SA CATEGORY I & II ILS - SPECIAL AIRCREW & AIRCRAFT CERTIFICATION REQUIRED

REIL Rwy 33
 TDZ/CL Rwsy 7L and 7R
 HIRL all Rwsy

AK, 23 FEB 2023 to 20 APR 2023

AK, 23 FEB 2023 to 20 APR 2023