

LOC/DME I-BSC <b>111.75</b> Chan <b>54(Y)</b>	APP CRS <b>149°</b>	Rwy Idg TDZE <b>151</b> Apt Elev <b>151</b>	<b>10000</b>
---	------------------------	---	--------------

# ILS RWY 15

## TED STEVENS ANCHORAGE INTL (ANC) (PANC)

DME required.

Inop table does not apply.

**MALSF** MISSED APPROACH: Climb to 800 then climbing right turn to 3000 on heading 200° and TED VOR/DME R-210 to JUKEP/TED 15 DME and hold. (TACAN aircraft climb to 800 then climbing right turn to 3000 on heading 200 and on EDF TACAN R-210 to JUKEP/EDF 22.6 DME and hold)

<b>D-ATIS</b> <b>135.5</b>	<b>ANCHORAGE APP CON</b> <b>118.6 290.5</b>	<b>ANCHORAGE TOWER</b> <b>118.3 257.8</b>	<b>GND CON</b> <b>121.9 338.25</b>	<b>CLNC DEL</b> <b>119.4 323.1</b>
-------------------------------	--	--	---------------------------------------	---------------------------------------

Procedure NA for arrivals at BGQ VORTAC on V438-456 northbound and T227 northeast bound.

ALTERNATE MISSED APCH FIX: 117.6 ENA Chan 123, JUKEP ENA Chan 34.2

TACAN MISSED APCH FIX: 113.4 EDF Chan 81, JUKEP EDF Chan 22.6

IAF BIG LAKE 112.5 BGQ Chan 72

IR-319, IR-330, IR-330, IR-330, IR-330

3300 TED Arc, 3000 TED Arc, 6400 TED Arc

PEPVE TED 22, R-012, R-2203B, R-2203C, R-2203A, R-037

(IAF) YOHNN I-BSC 21.8 RADAR

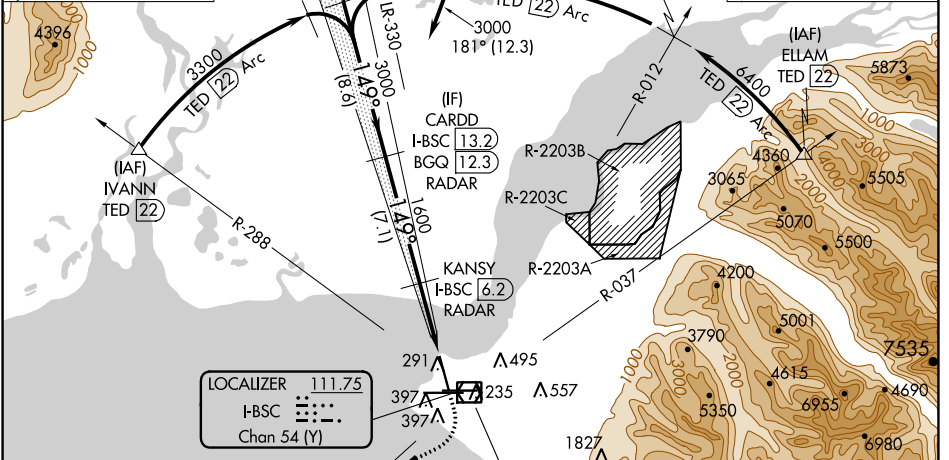
(IF) CARDD I-BSC 13.2, BGQ 12.3 RADAR

(IAF) IVANN TED 22, R-288

(IAF) ELLAM TED 22, R-012

KANSY I-BSC 6.2 RADAR

291, 397, 235, 495, 557, 1827, 1750, 4000



**LOCALIZER 111.75**  
I-BSC Chan 54 (Y)

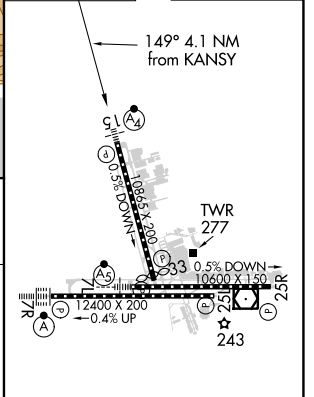
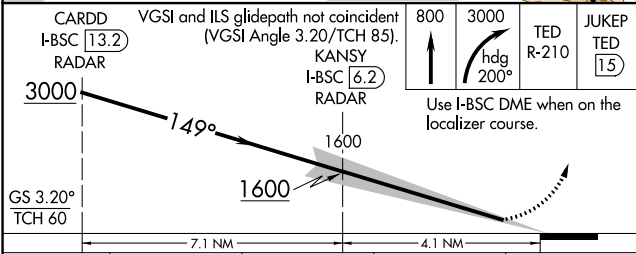
**ANCHORAGE 113.15 TED**  
Chan 78 (Y)

MSA TED 25 NM: 5600, 1800, 8700

JUKEP TED 15, R-210

0300, 210

ELEV 151	TDZE 151
----------	----------



CATEGORY	A	B	C	D
S-ILS 15	351/40	200 (200-¾)	401/40	250 (300-¾)

AK, 23 FEB 2023 to 20 APR 2023

AK, 23 FEB 2023 to 20 APR 2023