

AIRPORT DIAGRAM

TED STEVENS ANCHORAGE INTL (ANC) (PANC)
AL-1500 (FAA)
ANCHORAGE, ALASKA

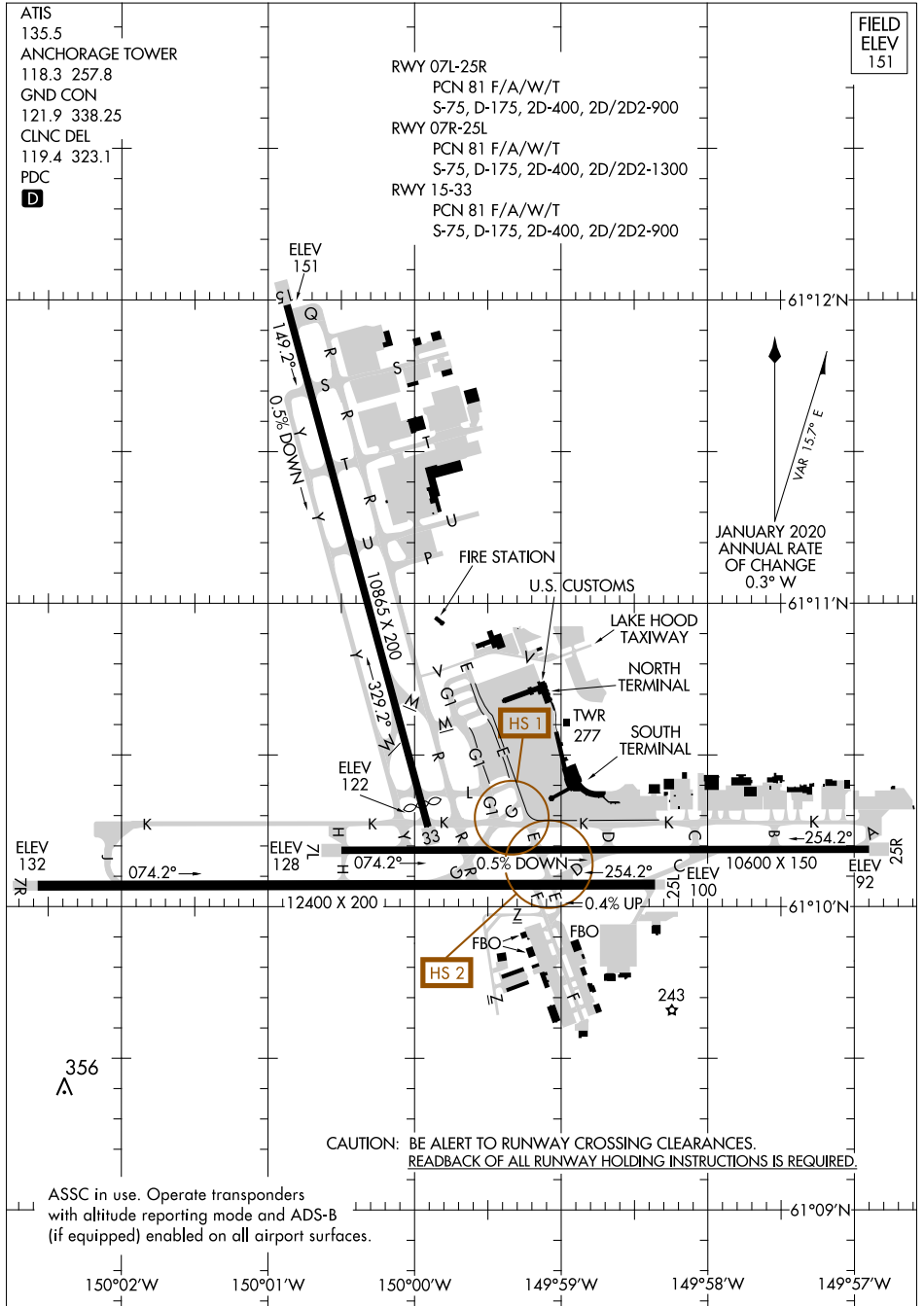
FIELD
ELEV
151

ATIS
135.5
ANCHORAGE TOWER
118.3 257.8
GND CON
121.9 338.25
CLNC DEL
119.4 323.1
PDC
D

RWY 07L-25R
PCN 81 F/A/W/T
S-75, D-175, 2D-400, 2D/2D2-900
RWY 07R-25L
PCN 81 F/A/W/T
S-75, D-175, 2D-400, 2D/2D2-1300
RWY 15-33
PCN 81 F/A/W/T
S-75, D-175, 2D-400, 2D/2D2-900

AK, 23 FEB 2023 to 20 APR 2023

AK, 23 FEB 2023 to 20 APR 2023



CAUTION: BE ALERT TO RUNWAY CROSSING CLEARANCES.
READBACK OF ALL RUNWAY HOLDING INSTRUCTIONS IS REQUIRED.

ASSC in use. Operate transponders with altitude reporting mode and ADS-B (if equipped) enabled on all airport surfaces.

AIRPORT DIAGRAM

ANCHORAGE, ALASKA
TED STEVENS ANCHORAGE INTL (ANC) (PANC)