

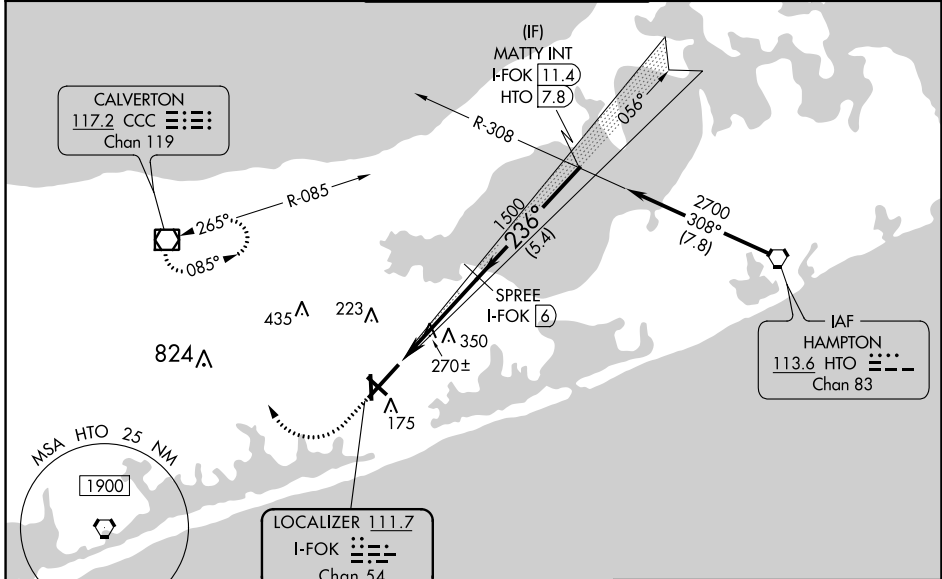
LOC/DME I-FOK 111.7 Chan 54	APP CRS 236°	Rwy Idg TDZE 66 Apt Elev 66	9002
---	------------------------	--	-------------

ILS or LOC RWY 24

FRANCIS S GABRESKI (F'OK)

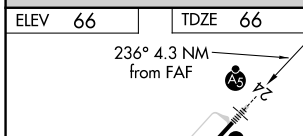
<p>Circling Rwy 15 NA at night.</p>	<p>MALS R</p>	<p>MISSED APPROACH: Climb to 880 then climbing right turn to 2000 direct CCC VOR/DME and hold.</p>		
		ASOS 119.925	NEW YORK APP CON 125.975 343.65	SUFFOLK COUNTY TOWER ★ 125.3 (CTAF) 236.6

ASOS 119.925	NEW YORK APP CON 125.975 343.65	SUFFOLK COUNTY TOWER ★ 125.3 (CTAF) 236.6	GND CON 121.8 225.4	UNICOM 122.95
------------------------	---	--	-------------------------------	-------------------------



DME required for LOC only.

ALTERNATE MISSED APCH FIX



880	2000	CCC	VGSI and ILS glidepath not coincident (VGSI Angle 3.00/TCH 77).	MATTY INT I-FOK 11.4
*LOC only	*I-FOK 2.9	I-FOK 1.7	SPREE I-FOK 6	2700

HIRL Rwy 6-24	MIRL Rwy 15-33	REL Rwys 6, 15, and 33			
FAF to MAP 4.3 NM					
Knots	60	90	120	150	180
Min:Sec	4:18	2:52	2:09	1:43	1:26

CATEGORY	A	B	C	D
S-ILS 24	266-½ 200 (200-½)			
S-LOC 24	520-½ 454 (500-½)	520-¾ 454 (500-¾)		
<input checked="" type="checkbox"/> CIRCLING	600-1 534 (600-1)	620-1 554 (600-1)	700-1¾ 634 (700-1¾)	740-2¼ 674 (700-2¼)

NE-2, 23 MAR 2023 to 20 APR 2023

NE-2, 23 MAR 2023 to 20 APR 2023