

ATHENS, GEORGIA

AL-983 (FAA)

23054

VOR/DME AHN 116.95 Chan 116 (Y)	APP CRS 262°	Rwy Idg 6122 TDZE 813 Apt Elev 813
---	------------------------	---

VOR RWY 27

ATHENS/BEN EPPS (AHN)

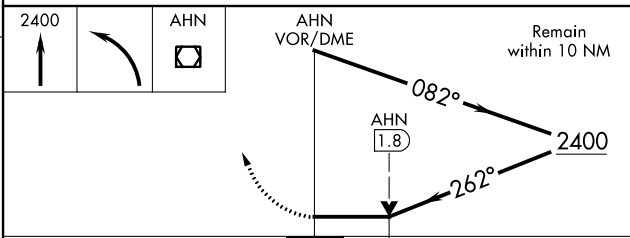
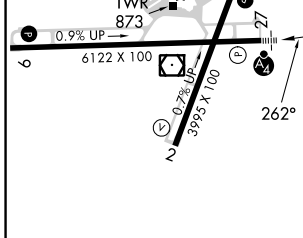
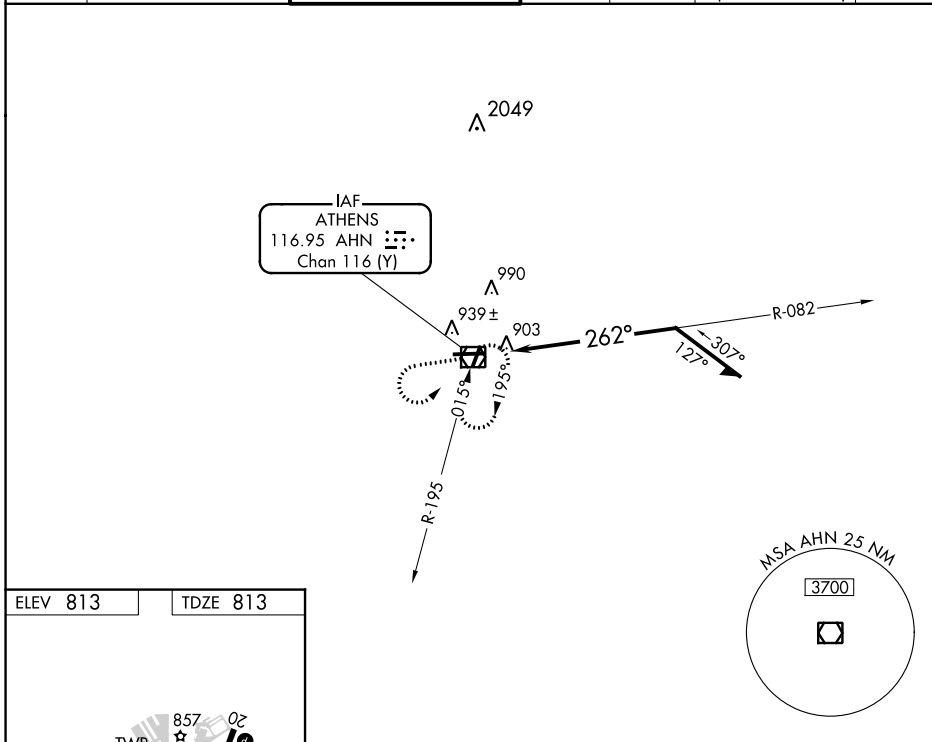
⚠ Night landing: Rwy 2, 20 NA. When local altimeter setting not received, use Winder altimeter setting: increase all MDA 60 feet and S-27 Cats C and D visibility to 1½ mile, and Circling Cat C visibility to 1½ mile, and Cat D to 2¼ mile. VDP NA when using Winder altimeter setting. For inop MALSF increase S-27 Cats A and B visibility to 1 mile, and Cats C and D to 1½ mile. For inop MALSF when using Winder altimeter setting increase S-27 Cats A and B visibility to 1 mile, and Cats C and D to 1½ mile.

MALSF



MISSED APPROACH:
Climb to 2400 then left turn direct AHN VOR/DME and hold.

ASOS 132.875	ATLANTA APP CON ★ 132.475 291.1	ATHENS TOWER ★ 126.3 (CTAF) 0 338.275	GND CON 121.8	CLNC DEL 121.8	CLNC DEL 132.475 291.1 (when twr closed)	UNICOM 122.95
------------------------	---	---	-------------------------	--------------------------	---	-------------------------



CATEGORY	A	B	C	D
S-27	1300-¾	487 (500-¾)	1300-1½	487 (500-1½)
C CIRCLING	1300-1	487 (500-1)	1320-1½ 507 (600-1½)	1460-2 647 (700-2)

ATHENS, GEORGIA
Amdt 13B 15SEP16

33°57'N-83°20'W

ATHENS/BEN EPPS (AHN)
VOR RWY 27

SE-4, 23 MAR 2023 to 20 APR 2023

SE-4, 23 MAR 2023 to 20 APR 2023