

WAAS CH 45815 W24A	APP CRS 243°	Rwy Idg TDZE Apt Elev	6547 1156 1156
--	------------------------	-----------------------------	---

RNAV (GPS) RWY 24

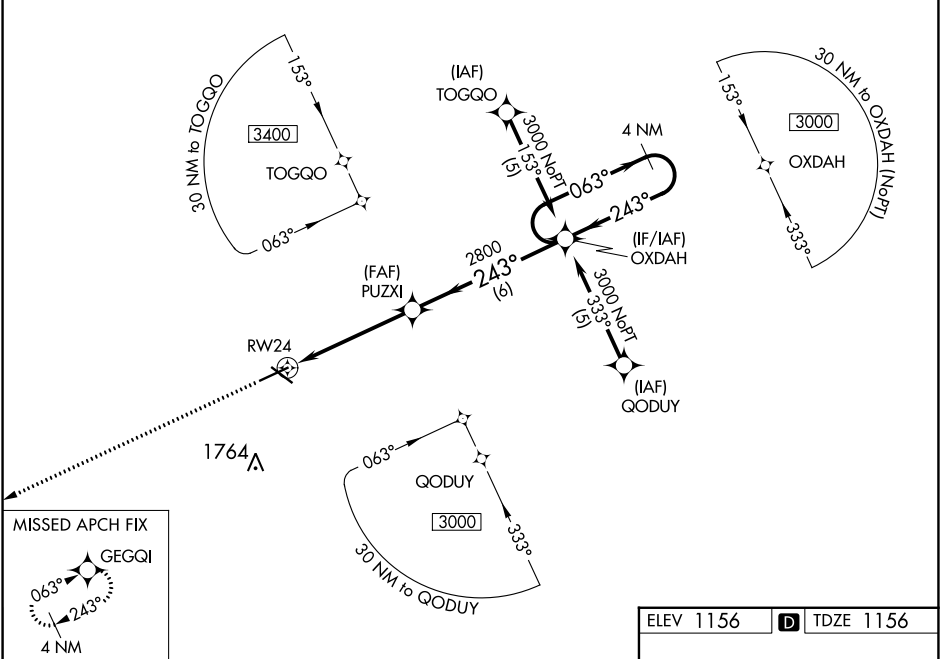
FORT DODGE RGNL (FOD)

RNP APCH

Baro-VNAV and VDP NA when using Webster City altimeter setting. For uncompensated Baro-VNAV systems, LNAV/VNAV NA below -17°C or above 54°C. When local altimeter setting not received, use Webster City altimeter setting: increase LPV DA to 1448 feet; increase LNAV/VNAV DA to 1546 feet; increase all MDAs 60 feet and LNAV Cat C/D and Circling Cat C visibility ¼ mile.

MISSED APPROACH:
Climb to 3000 direct GEGQI and hold.

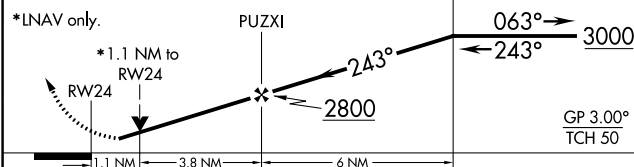
AWOS-3PT 118.775	MINNEAPOLIS CENTER 134.0 288.3	UNICOM 123.0 (CTAF) 1
----------------------------	--	---------------------------------



NC-3, 23 MAR 2023 to 20 APR 2023

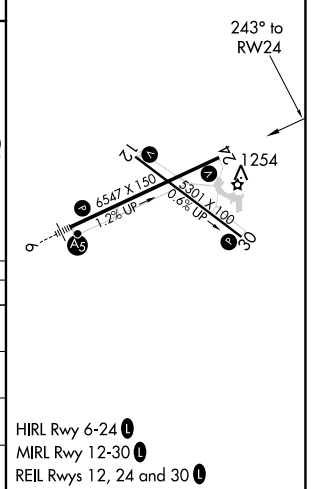
NC-3, 23 MAR 2023 to 20 APR 2023

3000 GEGQI VGSi and RNAV glidepath not coincident (VGSi Angle 3.00/TCH 41).
OXDAH 4 NM Holding Pattern



CATEGORY	A	B	C	D
LPV DA	1406-1		250 (300-1)	
LNAV/VNAV DA	1504-1¼		348 (400-1¼)	
LNAV MDA	1560-1	404 (500-1)	1560-1½ 404 (500-1½)	1560-1¼ 404 (500-1¼)
CIRCLING	1560-1 404 (500-1)	1620-1 464 (500-1)	1740-1½ 584 (600-1½)	2080-3 924 (1000-3)

ELEV 1156 **D** TDZE 1156



HIRL Rwy 6-24 1
MIRL Rwy 12-30 1
REIL Rws 12, 24 and 30 1