

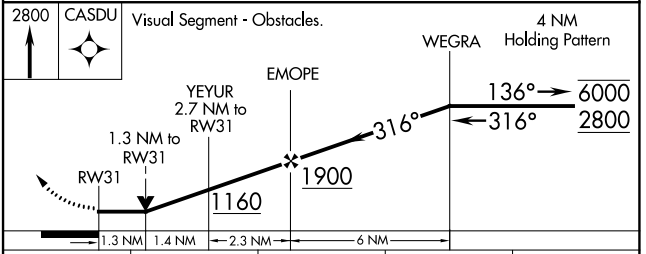
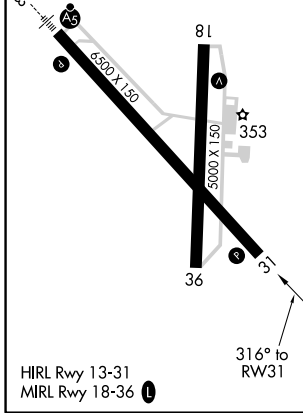
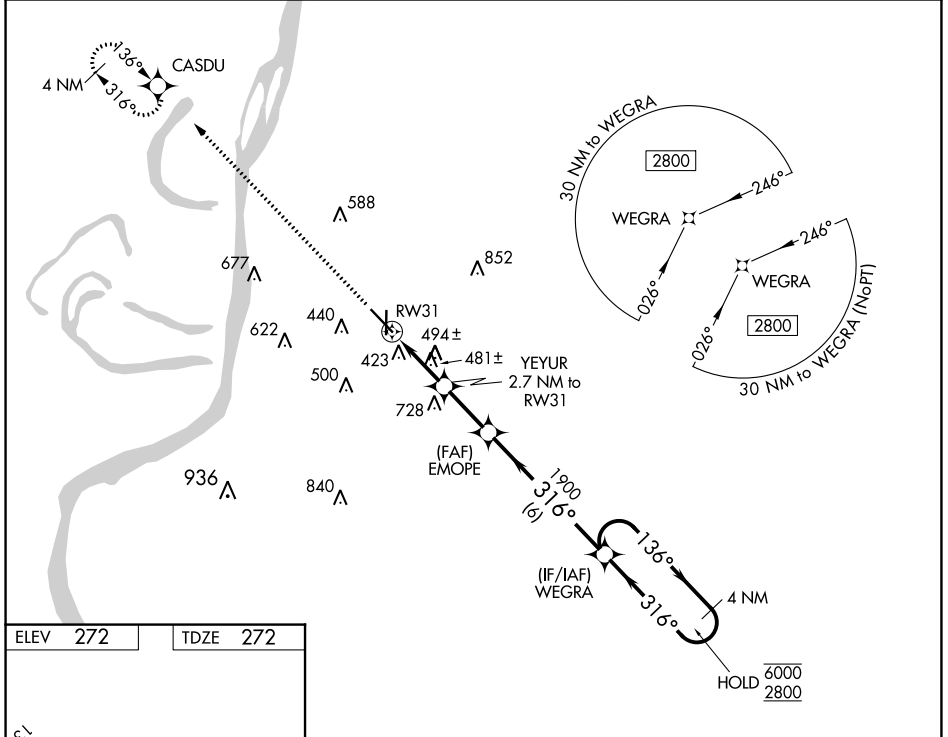
WAAS CH 90334 W31A	APP CRS 316°	Rwy ldg 6500 TDZE 272 Apt Elev 272
--	------------------------	---

RNAV (GPS) RWY 31

HARDY-ANDERS FLD/NATCHEZ-ADAMS COUNTY (HE/Z)

RNP APCH.	MISSED APPROACH: Climb to 2800 direct CASDU and hold.
<p>⚠ Circling Rwy 36 NA at night. Rwy 31 helicopter visibility reduction below 3/4 SM NA.</p>	

AWOS-3PT 124.675	HOUSTON CENTER 120.975 299.6	UNICOM 122.8 (CTAF) 0
----------------------------	--	---------------------------------



CATEGORY	A	B	C	D
LP MDA	740-1	468 (500-1)	740-1 3/8	468 (500-1 3/8)
LNVA MDA	800-1	528 (600-1)	800-1 1/2	528 (600-1 1/2)
CIRCLING	800-1 528 (600-1)	820-1 548 (600-1)	1020-2 1/4 748 (800-2 1/4)	1220-3 948 (1000-3)

SC-4, 23 MAR 2023 to 20 APR 2023

SC-4, 23 MAR 2023 to 20 APR 2023