

WAAS CH 49120 W33A	APP CRS 329°	Rwy Idg TDZE 89 Apt Elev 99	5186 89 99
--	------------------------	---	---------------------------------------

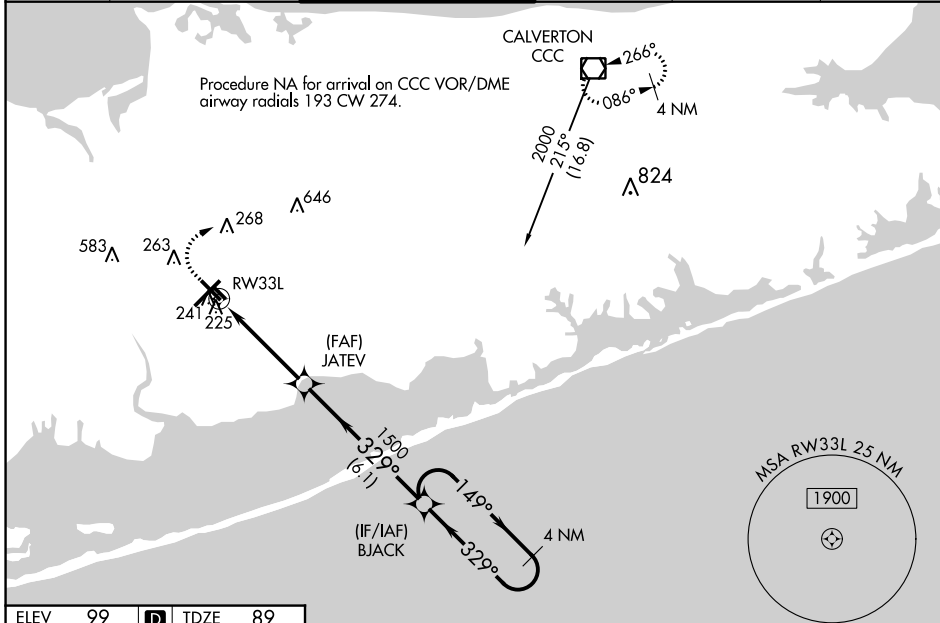
RNAV (GPS) RWY 33L

LONG ISLAND MAC ARTHUR (ISP)

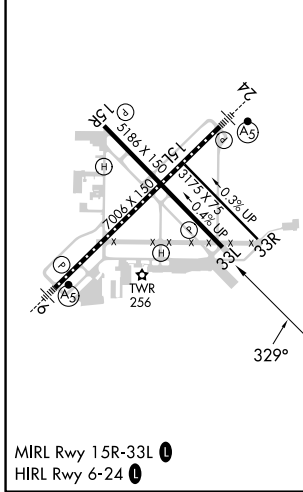
⚠ For uncompensated Baro-VNAV systems, LNAV/VNAV NA below -14°C (7°F) or above 54°C (130°F).
⚠ DME/DME RNP-0.3 NA. When local altimeter setting not received, use Shirley altimeter setting and increase LPV DA to 367 feet, LNAV/VNAV DA to 440 feet and LPV and LNAV/VNAV visibility all Cats 1/8 mile, all MDA 40 feet, increase LNAV Cats C/D visibility 1/8 mile, and Circling Cats C/D visibility 1/4 mile. VDP and Baro-VNAV NA when using Shirley altimeter setting. Helicopter visibility reduction below 3/4 SM NA.

MISSED APPROACH: Climb to 600 then climbing right turn to 2000 direct CCC VOR/DME and hold.

ATIS 120.725	NEW YORK APP CON 120.05 343.75	LONG ISLAND TOWER* 119.3 (CTAF) 0335.5	GND CON 135.3	CLNC DEL 121.85	UNICOM 122.95
------------------------	--	--	-------------------------	---------------------------	-------------------------



ELEV 99	D	TDZE 89
---------	----------	---------



600	2000	CCC	VGSI and RNAV glidepath not coincident (VGSI Angle 3.00/TCH 50).	4 NM Holding Pattern																									
* INAV only.																													
* 1.1 NM to RW33L																													
<table border="1"> <tr> <td>1.1</td> <td>3.2 NM</td> <td>6.1 NM</td> <td></td> </tr> </table>					1.1	3.2 NM	6.1 NM																						
1.1	3.2 NM	6.1 NM																											
RW33L	JATEV 1500	BJACK	2000	GP 3.00° TCH 45																									
<table border="1"> <thead> <tr> <th>CATEGORY</th> <th>A</th> <th>B</th> <th>C</th> <th>D</th> </tr> </thead> <tbody> <tr> <td>LPV DA</td> <td></td> <td>339-7/8</td> <td>250 (300-7/8)</td> <td></td> </tr> <tr> <td>LNAV/VNAV DA</td> <td></td> <td>412-1 1/8</td> <td>323 (400-1 1/8)</td> <td></td> </tr> <tr> <td>LNAV MDA</td> <td>500-1</td> <td>411 (500-1)</td> <td>500-1 1/4</td> <td>411 (500-1 1/4)</td> </tr> <tr> <td>C CIRCLING</td> <td>600-1 501 (600-1)</td> <td>660-1 561 (600-1)</td> <td>660-1 1/2 561 (600-1 1/2)</td> <td>960-2 3/4 861 (900-2 3/4)</td> </tr> </tbody> </table>					CATEGORY	A	B	C	D	LPV DA		339-7/8	250 (300-7/8)		LNAV/VNAV DA		412-1 1/8	323 (400-1 1/8)		LNAV MDA	500-1	411 (500-1)	500-1 1/4	411 (500-1 1/4)	C CIRCLING	600-1 501 (600-1)	660-1 561 (600-1)	660-1 1/2 561 (600-1 1/2)	960-2 3/4 861 (900-2 3/4)
CATEGORY	A	B	C	D																									
LPV DA		339-7/8	250 (300-7/8)																										
LNAV/VNAV DA		412-1 1/8	323 (400-1 1/8)																										
LNAV MDA	500-1	411 (500-1)	500-1 1/4	411 (500-1 1/4)																									
C CIRCLING	600-1 501 (600-1)	660-1 561 (600-1)	660-1 1/2 561 (600-1 1/2)	960-2 3/4 861 (900-2 3/4)																									

NE-2, 23 MAR 2023 to 20 APR 2023

NE-2, 23 MAR 2023 to 20 APR 2023