

TACAN Y RWY 32L/R

TACAN NTU Chan 113	APCH CRS 309°	Rwy ldg 32L 8000 32R 8001	TDZE 32L 22 Arprt Elev 32R 20
-----------------------	------------------	---------------------------------	--

AL-934 [USN]

OCEANA NAS (APOLLO SOUCEK FLD) (KNTU)

▲ * When ALS inop, increase CAT AB vis to 1 mile, CAT CD vis to 1½ miles.

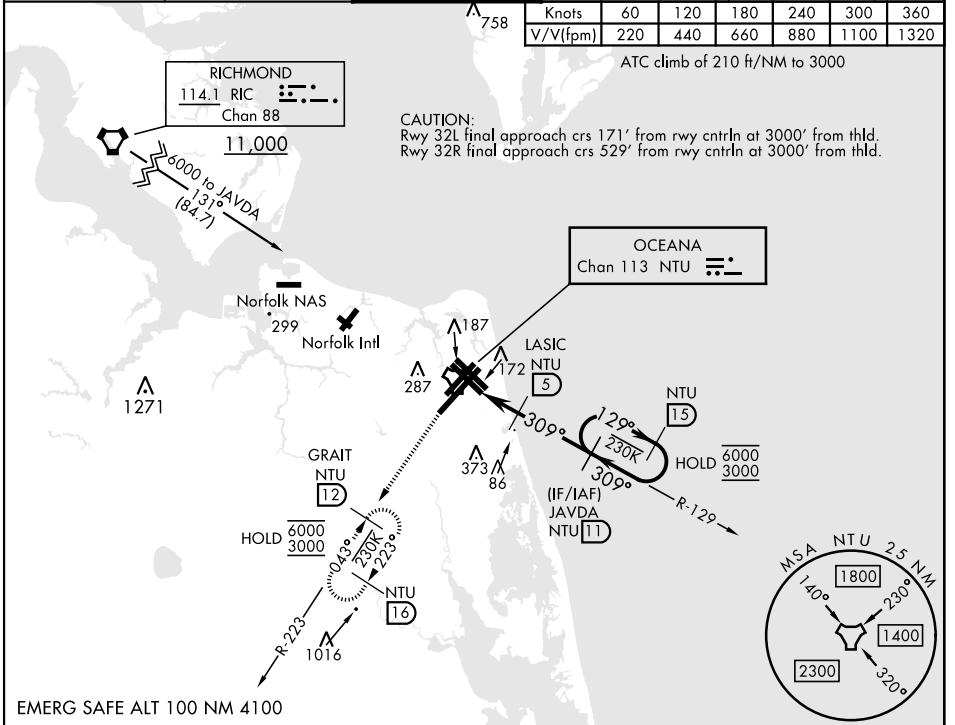


MISSED APPROACH: Climbing left turn to 3000, INTERCEPT NTU TACAN R-223 to GRAIT and hold.

ATIS 317.6	APP/DEP CON 123.9 266.8	TOWER 127.075 360.2	GND CON 119.6 336.4	CLNC DEL 254.4	ASR/ PAR
---------------	----------------------------	------------------------	------------------------	-------------------	-------------

Knots	60	120	180	240	300	360
V/V(fpm)	220	440	660	880	1100	1320

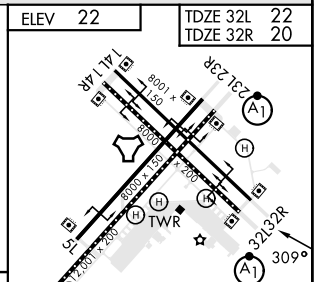
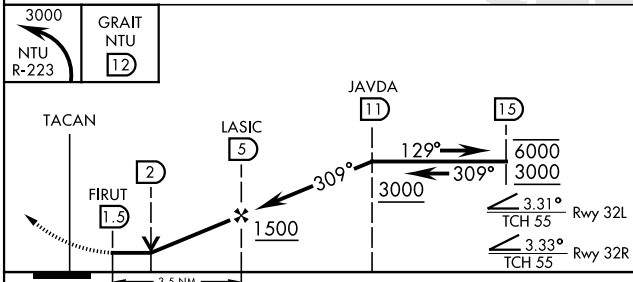
ATC climb of 210 ft/NM to 3000



NE-3, 23 MAR 2023 to 20 APR 2023

NE-3, 23 MAR 2023 to 20 APR 2023

EMERG SAFE ALT 100 NM 4100



CATEGORY	A	B	C	D
S-32L *	440-½	418 (500-½)	440-¾	418 (500-¾)
S-32R	440-1	420 (500-1)	440-1½	420 (500-1½)
CIRCLING	500-1	478 (500-1)	600-1½ 578 (600-½)	600-2 578 (600-2)

HIRL all rwy's
Wave-Off lgt all rwy's

TACAN Y RWY 32L/R