

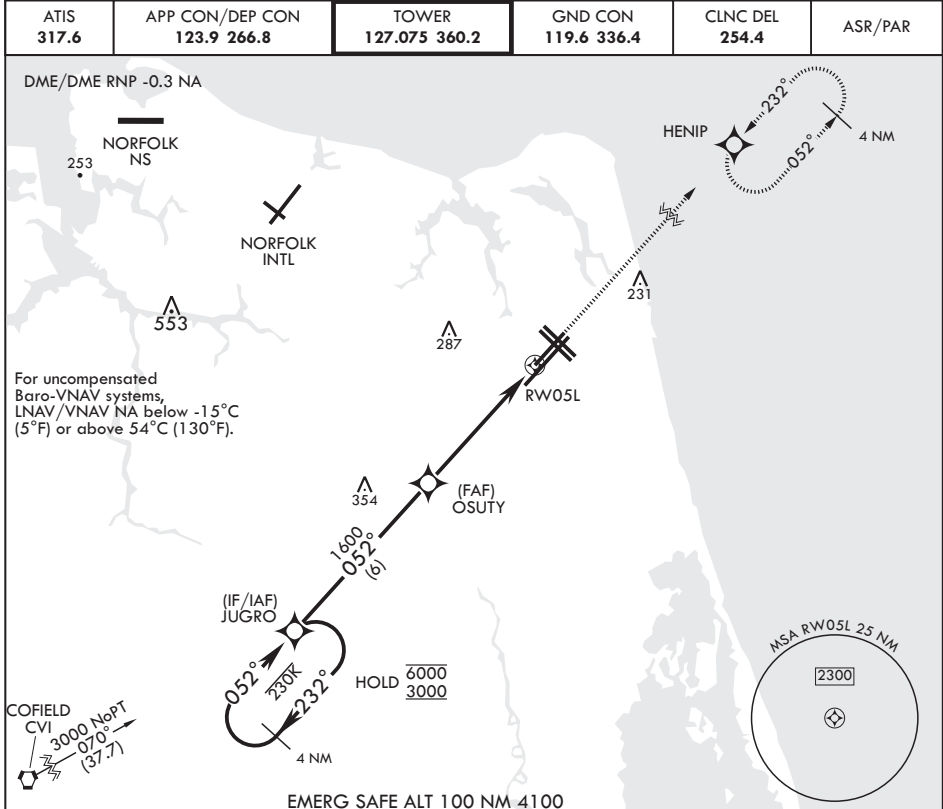
VIRGINIA BEACH, VIRGINIA

RNAV (GPS) RWY 5L

WAAS CH 63997 W05A	APCH CRS 052°	Rwy ldg TDZE Arprt Elev	8000 20 22
--	-------------------------	-------------------------------	---------------------------------------

AL-934 (USN) OCEANA NAS (APOLLO SOUCEK FLD) (KNTU)

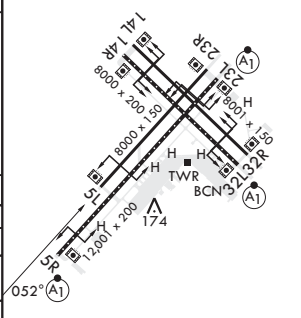
	MISSED APPROACH: Climb to 3000 direct HENIP and hold. Continue climb in hold to 3000.				
	ATIS 317.6	APP CON/DEP CON 123.9 266.8	TOWER 127.075 360.2	GND CON 119.6 336.4	CLNC DEL 254.4



NE-3, 23 MAR 2023 to 20 APR 2023

NE-3, 23 MAR 2023 to 20 APR 2023

4 NM Holding Pattern	JUGRO	RNAV TCH not coincident with PAR TCH (50ft).	3000	HENIP	ELEV 22	TDZE 20
6000 3000	← 232°	→ 052°	3000	↘ 052°	↘ 1600	↘ 1.1 NM to RW05L
GP 3.00° TCH 55						4.8 NM
CATEGORY	A	B	C	D		
LPV DA	220- ³ / ₈		200	(200- ³ / ₈)		
LNAV/VNAV DA	305- ⁷ / ₈ 285 (300- ⁷ / ₈)	316- ⁷ / ₈ 296 (300- ⁷ / ₈)	324- ⁷ / ₈ 304 (400- ⁷ / ₈)	335- ⁷ / ₈ 315 (400- ⁷ / ₈)		
LNAV MDA	440-1	420 (500-1)	440-1 ¹ / ₂ 420 (500-1 ¹ / ₂)		600-2 (500-1 ¹ / ₂)	
CIRCLING	500-1	478 (500-1)	600-1 ¹ / ₂ 578 (600-1 ¹ / ₂)		600-2 578 (600-2)	
					HIRL all Rwys Wave-Off Lights all Rwys	



VIRGINIA BEACH, VIRGINIA

36°49'N - 76°02'W OCEANA NAS (APOLLO SOUCEK FLD) (KNTU)

Amdt 4 27 JAN 22

RNAV (GPS) RWY 5L