

HI-TACAN Z RWY 5L

TACAN NTU Chan 113	APCH CRS 043°	Rwy Idg 8000
		TDZE 20
		Arprt Elev 22

AL-934 [USN]

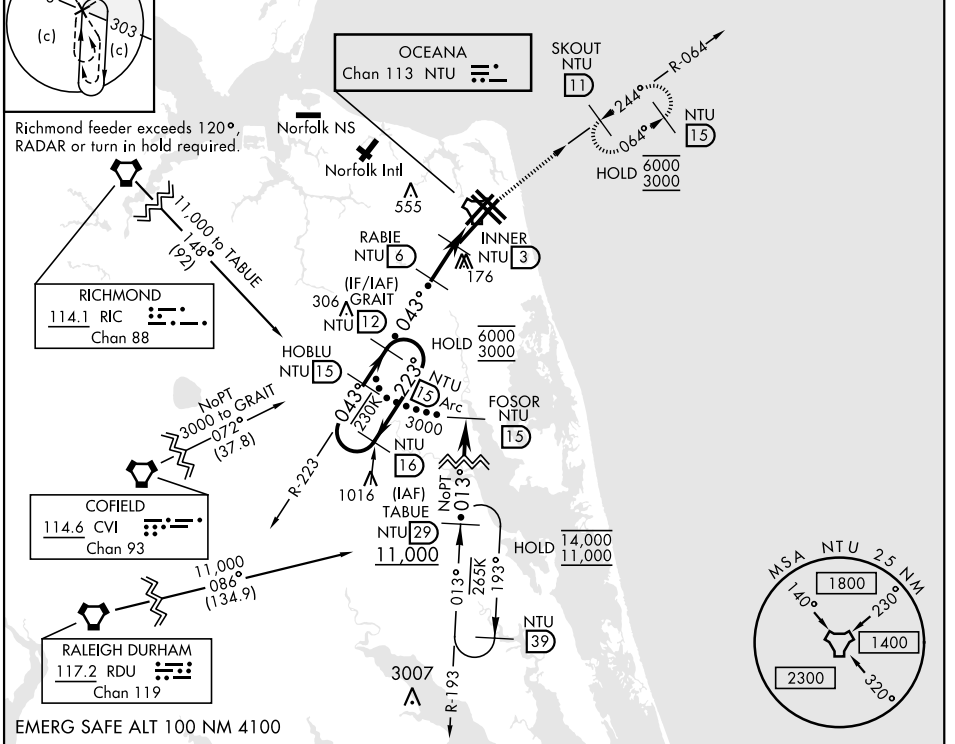
OCEANA NAS (APOLLO SOUCEK FLD) (KNTU)

MISSED APPROACH: Climb to 3000 via R-223 to NTU TACAN and via R-064 to SKOUT and hold.

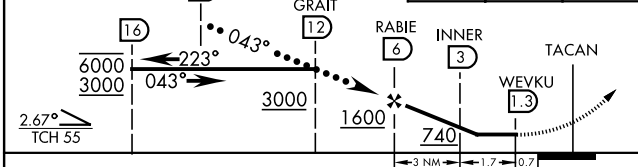
ATIS 317.6	APP/DEP CON 123.9 266.8	TOWER 127.075 360.2	GND CON 119.6 336.4	CLNC DEL 254.4	ASR/ PAR
---------------	----------------------------	------------------------	------------------------	-------------------	-------------

	CAUTION: Final approach crs 17° from rwy cntrl at 3000' from thld.					
	Knots V/V(fpm)	60	120	180	240	300
	210	420	630	840	1050	1260

Min climb of 210 ft/NM to 3000 - Controlling Obstacle Unk



HOBLU NTU 15 GRAIT NTU 12 RABIE NTU 6 INNER NTU 3 TACAN WEVKU NTU 1.3	3000 NTU R-223 3000 NTU R-064	ELEV 22	TDZE 20
--------------------------------------------------------------------------------------	----------------------------------	---------	---------



CATEGORY	C	D	E
S-5L	420-1½	400 (400-1½)	
CIRCLING	600-1½ 578 (600-1½)	600-2 578 (600-2)	900-3 878 (900-3)

HI-TACAN Z RWY 5L

HIRL all Rwy
Wave-Off Lgt all Rwy

NE-3, 23 MAR 2023 to 20 APR 2023

NE-3, 23 MAR 2023 to 20 APR 2023