

VIRGINIA BEACH, VIRGINIA

HI-TACAN Z RWY 23L/R

AL-934 [USN]

OCEANA NAS (APOLLO SOUCEK FLD) (KNTU)

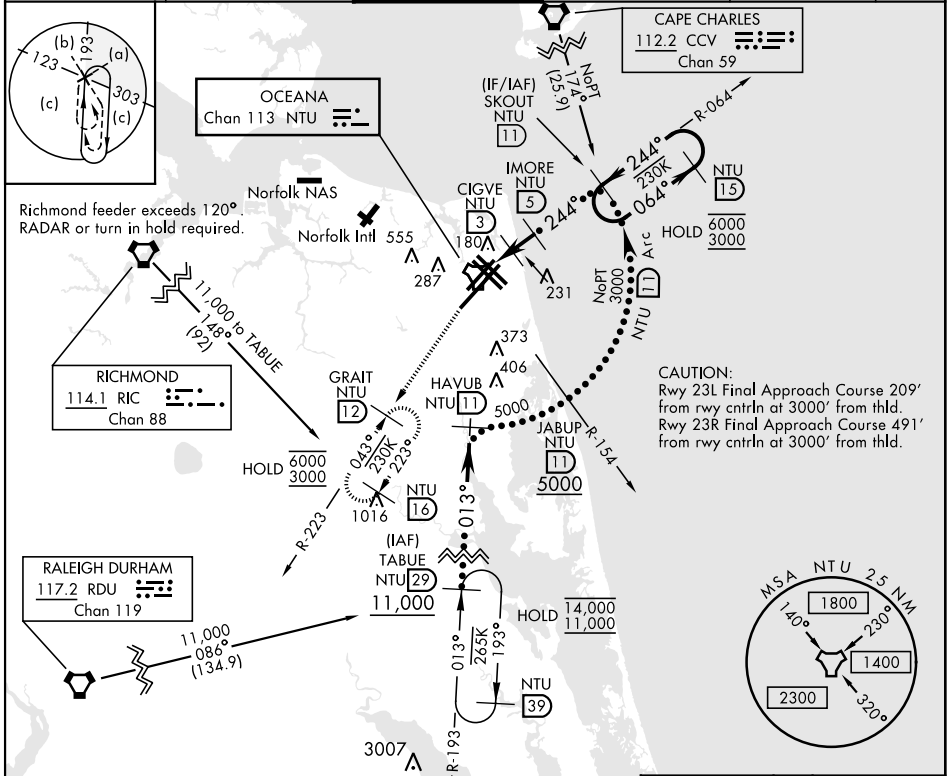
TACAN NTU Chan 113	APCH CRS 244°	Rwy ldg 23L 12,001 23R 8000 TDZE 23L 21 23R 20 Arprt Elev 22
-----------------------	------------------	--

ALSF-1

* When ALS inop, increase CAT CDE vis to 1½ miles

MISSED APPROACH: Climb to 3000 via R-064 to NTU TACAN, and via R-223 to GRAIT and hold.

ATIS 317.6	APP/DEP CON 123.9 266.8	TOWER 127.075 360.2	GND CON 119.6 336.4	CLNC DEL 254.4	ASR/ PAR
---------------	----------------------------	------------------------	------------------------	-------------------	-------------



NE-3, 23 MAR 2023 to 20 APR 2023

NE-3, 23 MAR 2023 to 20 APR 2023

EMERG SAFE ALT 100 NM 4100

3000	NTU R-064	NTU	NTU R-223
------	-----------	-----	-----------

CATEGORY	C	D	E
S-23L*	440-¾	419 (500-¾)	
S-23R	440-1½	420 (500-1½)	
CIRCLING	600-1½ 578 (600-1½)	600-2 578 (600-2)	900-3 878 (900-3)

ELEV 22	TDZE 23L 21 TDZE 23R 20
---------	----------------------------

HIRL all Rwy
Wave-Off Lgt all Rwy

VIRGINIA BEACH, VIRGINIA

36°49'N-76°02'W

OCEANA NAS (APOLLO SOUCEK FLD) (KNTU)

Orig 27JAN22

HI-TACAN Z RWY 23L/R