

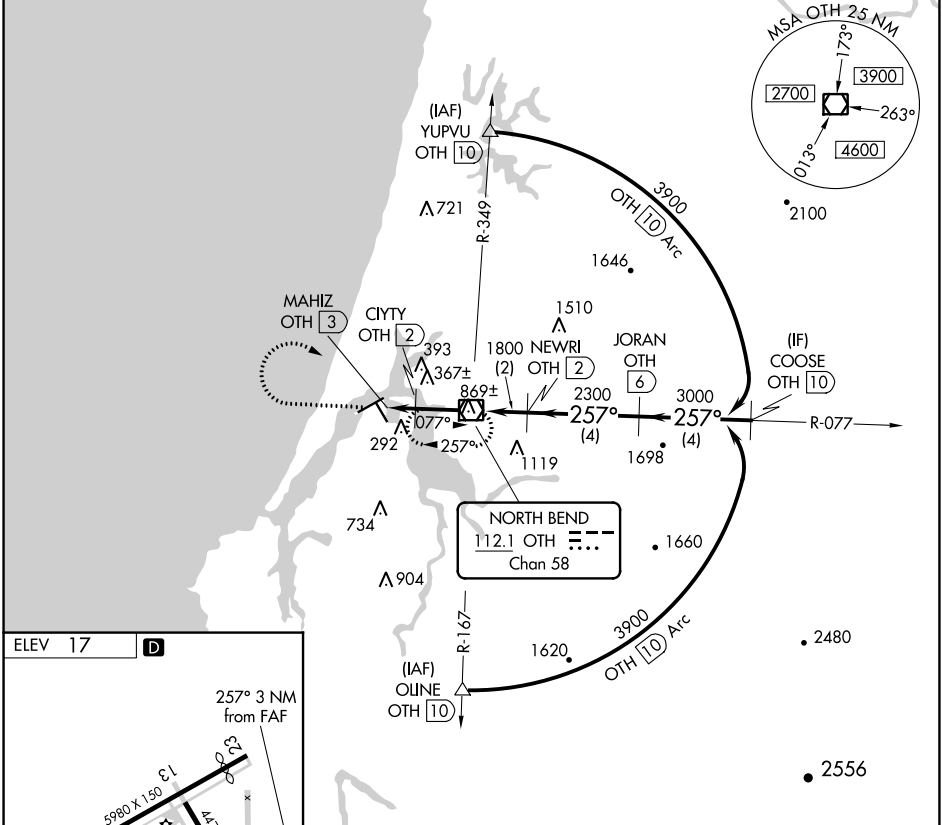
VOR/DME OTH <b>112.1</b> Chan <b>58</b>	APP CRS <b>257°</b>	Rwy Idg TDZE Apt Elev	<b>N/A</b> <b>N/A</b> <b>17</b>
-----------------------------------------------	------------------------	-----------------------------	---------------------------------------

**VOR-B**  
SOUTHWEST OREGON RGNL (OTH)

DME required.  
 ⚠ Circling Rwy 13, 31 NA at night.  
 ⚠ Rwy 13, 31 helicopter visibility reduction below 1 SM NA.

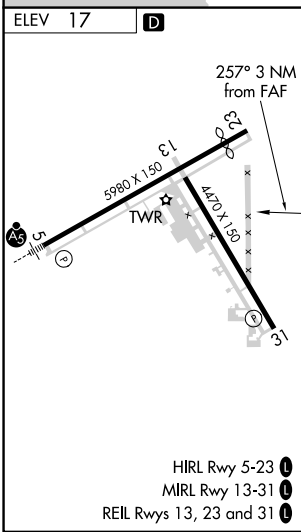
MISSED APPROACH: Climb to 2300 then climbing right turn to 3600 direct OTH VOR/DME and hold.

AWOS-3PT <b>135.075</b>	SEATTLE CENTER <b>127.55 254.35</b>	NORTH BEND TOWER* <b>118.45 (CTAF) 0</b>	GND CON <b>127.1</b>
----------------------------	----------------------------------------	---------------------------------------------	-------------------------



NW-1, 23 MAR 2023 to 20 APR 2023

NW-1, 23 MAR 2023 to 20 APR 2023



	2300	3600	OTH					
	↑	↷						
				NEWRI OTH 2	JORAN OTH 6			COOSE OTH 10
								3900
				CIYTY OTH 2				3000
				MAHIZ OTH 3				2300
								1800
								1060
	1 NM	2 NM	2 NM	4 NM	4 NM			
CATEGORY	A	B	C	D				
CIRCLING	700-1 683 (700-1)	820-1 803 (900-1)	1100-3 1083 (1100-3)	1180-3 1163 (1200-3)				