

LOC/DME I-OTH <b>108.5</b> Chan <b>22</b>	APP CRS <b>046°</b>	Rwy Idg TDZE <b>16</b> Apt Elev <b>17</b>	<b>5320</b>
---	------------------------	---	-------------

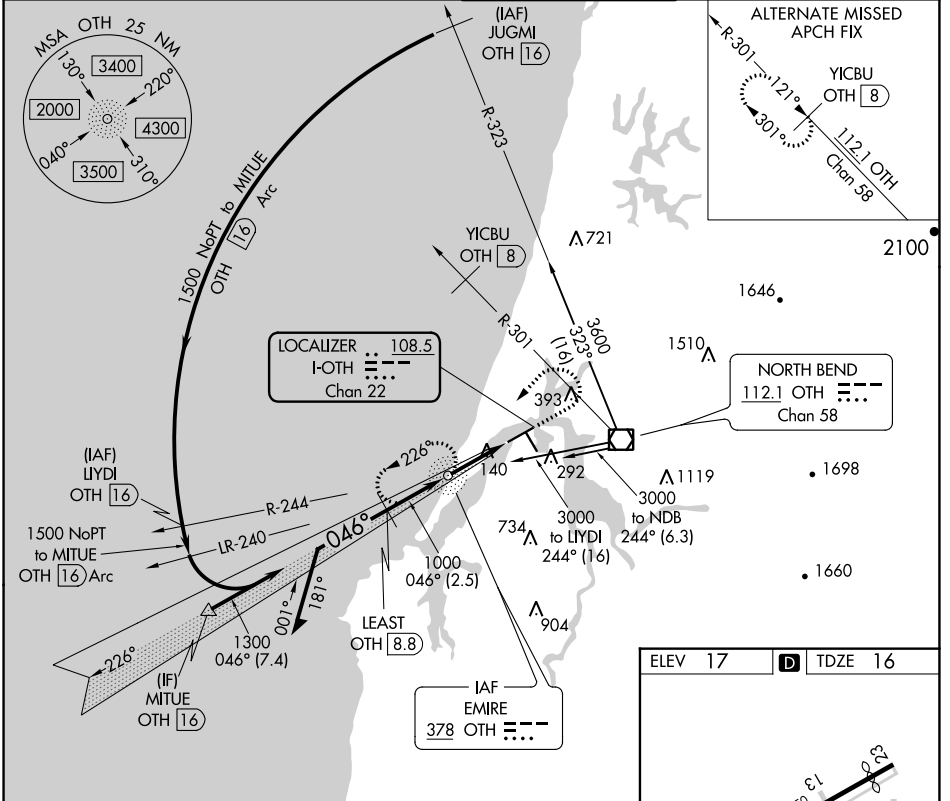
# COPTER ILS or LOC RWY 5

SOUTHWEST OREGON RGNL (OTH)

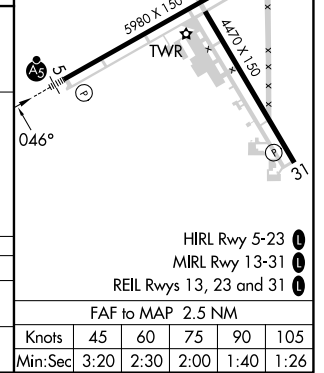
ADF and DME required.

MALS R MISSED APPROACH: Climb to 600 then climbing left turn to 2100 direct OTH NDB and hold, continue climb-in-hold to 2100.

AWOS-3PT <b>135.075</b>	SEATTLE CENTER <b>127.55 254.35</b>	NORTH BEND TOWER* <b>118.45 (CTAF) 0</b>	GND CON <b>127.1</b>
----------------------------	--	---	-------------------------



Remain within 5 NM	OTH NDB	600	2100	OTH
2000	226°	1300	046°	LEAST OTH 8.8
GS 3.00°	1000	1000	2.5 NM	2.5 NM
H-ILS 5	COPTER			
H-LOC 5	216-1/2	200 (200-1/2)	400-1/2	384 (400-1/2)



NW-1, 23 MAR 2023 to 20 APR 2023

NW-1, 23 MAR 2023 to 20 APR 2023