

VOR/DME LRP <b>117.3</b> Chan <b>120</b>	APP CRS <b>090°</b>	Rwy Idg <b>6118</b> TDZE <b>399</b> Apt Elev <b>403</b>
--	------------------------	---

# VOR RWY 8

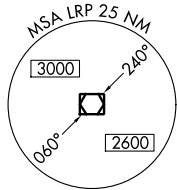
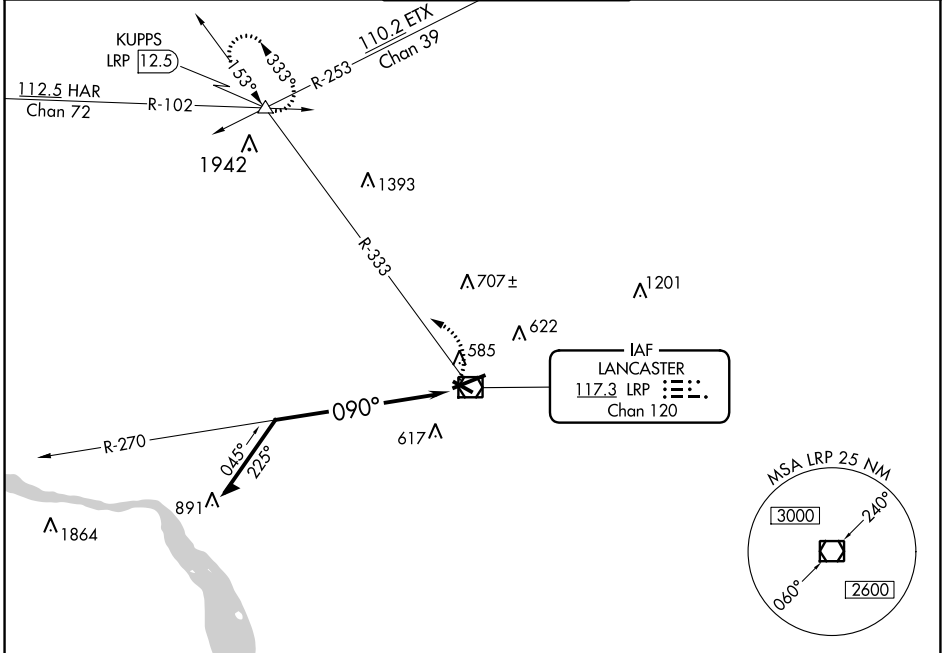
LANCASTER (LNS)

**⚠** Night landing: Rwy 13, 31 NA. Inop table does not apply.  
**⚠** When local altimeter setting not received, use Harrisburg  
 Init altimeter setting and increase all MDA 80 feet.



MISSED APPROACH: Climbing left turn to 3000 via LRP VOR/DME R-333 to KUPPS INT/LRP 12.5 DME and hold.

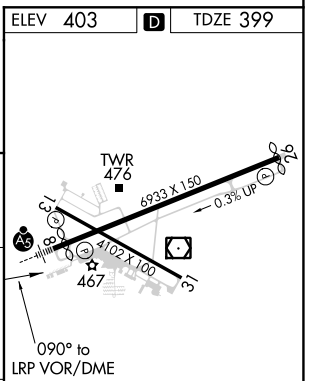
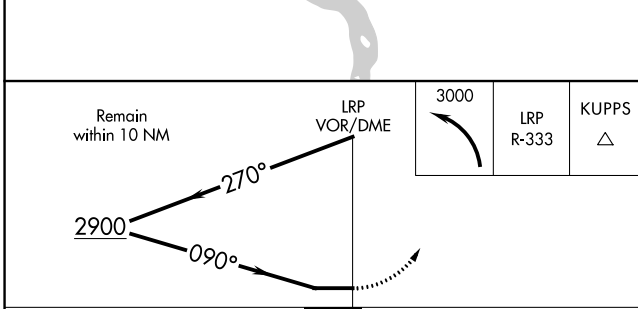
ATIS <b>125.675</b>	HARRISBURG APP CON <b>126.45 281.525</b>	LANCASTER TOWER ★ <b>120.9</b> (CTAF) <b>251.1</b>	GND CON <b>121.8</b>	UNICOM <b>122.95</b>
------------------------	---	---	-------------------------	-------------------------



NE-4, 23 MAR 2023 to 20 APR 2023

NE-4, 23 MAR 2023 to 20 APR 2023

ELEV 403	<b>D</b>	TDZE 399
----------	----------	----------



CATEGORY	A	B	C	D
S-8	1400-1¼ 1001 (1000-1¼)	1400-1½ 1001 (1000-1½)	1400-3	1001 (1000-3)
CIRCLING	1400-1¼ 997 (1000-1¼)	1400-1½ 997 (1000-1½)	1400-3	997 (1000-3)

REIL Rwy 31 **1**  
 HIRL Rwy 8-26 **1**  
 MIRL Rwy 13-31 **1**