

WAAS CH <b>78123</b> <b>W26A</b>	APP CRS <b>257°</b>	Rwy Idg TDZE Apt Elev	<b>6118</b> <b>384</b> <b>403</b>
--	------------------------	-----------------------------	---

# RNAV (GPS) RWY 26

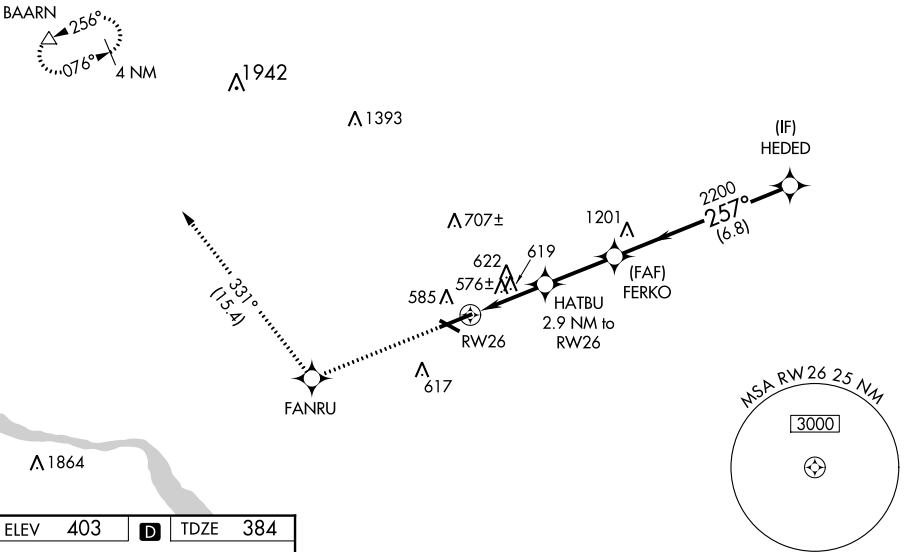
LANCASTER (LNS)

**⚠** Night landing: Rwy 13, 31 NA. For uncompensated Baro-VNAV systems, LNAV/VNAV NA below -1.5°C (5°F) or above 41°C (105°F). DME/DME RNP-0.3 NA. Helicopter visibility reduction below 1 SM NA. When local altimeter setting not received, use Harrisburg Intl altimeter setting and increase all DA 64 feet, all MDA 80 feet, increase LPV and LNAV/VNAV visibility all Cats and LNAV and Circling Cat C and D visibility ¼ mile. Baro-VNAV and VDP NA when using Harrisburg Intl altimeter setting.

**MISSED APPROACH:**  
Climb to 3000 direct FANRU and on track 331° to BAARN and hold.

ATIS <b>125,675</b>	HARRISBURG APP CON <b>126.45 281.525</b>	LANCASTER TOWER * <b>120.9 (CTAF) 0 251.1</b>	GND CON <b>121.8</b>	UNICOM <b>122.95</b>
------------------------	---	--	-------------------------	-------------------------

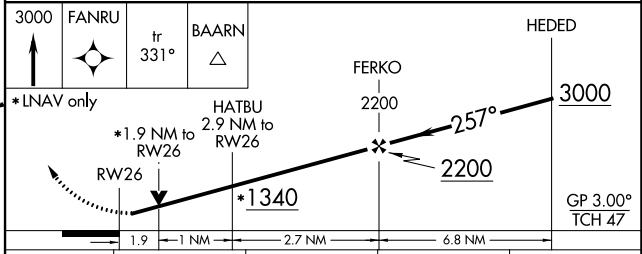
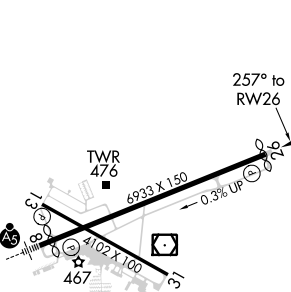
## RADAR REQUIRED



NE-4, 23 MAR 2023 to 20 APR 2023

NE-4, 23 MAR 2023 to 20 APR 2023

ELEV	403	<b>D</b>	TDZE	384
------	-----	----------	------	-----



CATEGORY	A	B	C	D
LPV DA		634- <sup>3</sup> / <sub>4</sub>	250 (300- <sup>3</sup> / <sub>4</sub> )	
LNAV/VNAV DA		905-1 <sup>3</sup> / <sub>4</sub>	521 (500-1 <sup>3</sup> / <sub>4</sub> )	
LNAV MDA	1020-1	636 (700-1)	1020-1 <sup>7</sup> / <sub>8</sub>	636 (700-1 <sup>7</sup> / <sub>8</sub> )
CIRCLING	1020-1	617 (700-1)	1020-1 <sup>7</sup> / <sub>8</sub>	1060-2
			617 (700-1 <sup>7</sup> / <sub>8</sub> )	657 (700-2)

- REIL Rwy 31 **Ⓛ**
- HIRL Rwy 8-26 **Ⓛ**
- MIRL Rwy 13-31 **Ⓛ**