

LOC I-INS <b>108.7</b>	APP CRS <b>077°</b>	Rwy Ldg TDZE Apt Elev	<b>6118</b> <b>399</b> <b>403</b>
---------------------------	------------------------	-----------------------------	---

# ILS or LOC RWY 8

LANCASTER (LNS)

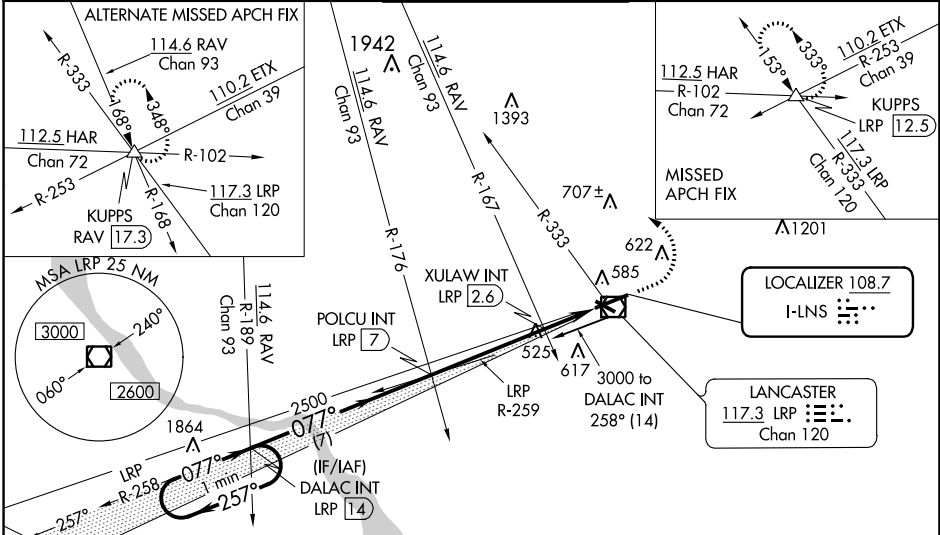
**⚠** Night landing: Rwy 13, 31 NA. When local altimeter setting not received, use Harrisburg Intl altimeter setting and increase S-ILS DA to 664 feet; increase all MDAs 80 feet and visibility S-LOC 8 Cats C/D and Circling Cats B/D visibility ¼ SM, increase Circling Cat C visibility ½ SM, increase XULAW fix minimums S-LOC 8 and Circling Cats C/D visibility ¼ SM. For inop MALSR, increase S-LOC 8 Cats C and D visibility ¾ mile. For inop MALSR when using Harrisburg Intl altimeter setting increase S-ILS 8 visibility all Cats ¾ mile, S-LOC 8 Cats B visibility ¾ mile, Cat C, D 1 mile, increase Circling Cat B, D visibility ¼ mile. XULAW Fix minimums increase S-LOC 8 Cats C and D visibility to 1 ½ mile and Circling Cat C visibility to 1 ¾ mile.

MALSR



**MISSED APPROACH:**  
Climb to 1200 then climbing left turn to 3000 on LRP VOR/DME R-333 to KUPPS INT/LRP 12.5 DME and hold.

ATIS <b>125.675</b>	HARRISBURG APP CON <b>126.45 281.525</b>	<b>LANCASTER TOWER*</b> <b>120.9 (CTAF) 0 251.1</b>	GND CON <b>121.8</b>	UNICOM <b>122.95</b>
------------------------	---	--	-------------------------	-------------------------



NE-4, 23 MAR 2023 to 20 APR 2023

NE-4, 23 MAR 2023 to 20 APR 2023

*1160 when using Harrisburg Intl altimeter setting.				ELEV 403	TDZE 399
One Minute Holding Pattern		DALAC INT LRP (14)	POLCU INT LRP (7)	XULAW INT LRP (2.6)	KUPPS LRP R-333
3000 ← 257°		077° →		*LOC only.	
GS 3.00° TCH 40		coincident		LRP VOR/DME	
VGSI and descent angles not coincident (VGSI Angle 3.00/TCH 40).		2500		2500	
7 NM		4.4 NM		2.1 NM	
CATEGORY	A	B	C	D	
S-ILS 8	599-½		200 (200-½)		
S-LOC 8	1080-½ 681 (700-½)		1080-1½ 681 (700-1½)		
CIRCLING	1080-1 677 (700-1)		1080-2 677 (700-2) 1080-2¼ 677 (700-2¼)		
XULAW FIX MINIMUMS (DUAL VOR RECEIVERS OR DME REQUIRED)					
S-LOC 8	800-½ 401 (400-½)		800-¾ 401 (400-¾)		
CIRCLING	940-1 537 (600-1)		960-1½ 657 (700-2) 1060-2 657 (700-2)		
077° 6.5 NM from FAF					
REIL Rwy 31					
HIRL Rwy 8-26					
MIRL Rwy 13-31					
FAF to MAP 6.5 NM					
Knots 60 90 120 150 180					
Min:Sec 6:30 4:20 3:15 2:36 2:10					