

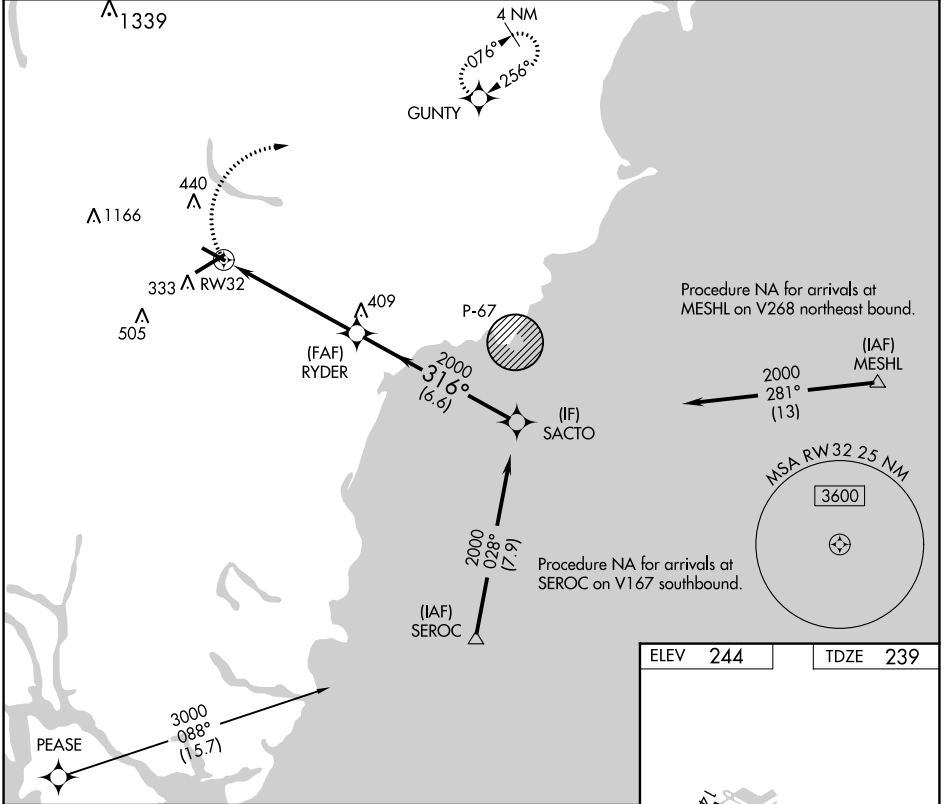
APP CRS	Rwy Idg	4999
316°	TDZE	239
	Apt Elev	244

RNAV (GPS) RWY 32

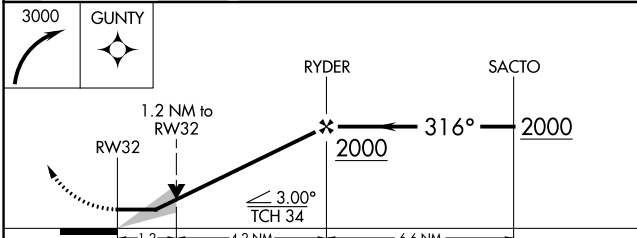
SANFORD SEACOAST RGNL (SFM)

RNP APCH.		MISSED APPROACH: Climbing right turn to 3000 direct GUNTY and hold, continue climb-in-hold to 3000.	
-----------	--	---	--

AWOS-3PT 120.025	PORTLAND APP CON* 119.75 269.35	CLINC DEL 121.725	UNICOM 123.075 (CTAF)
----------------------------	---	-----------------------------	---------------------------------



NE-1, 23 MAR 2023 to 20 APR 2023



REIL Rwy 7
HIRL Rwy 7-25
MIRL Rwy 14-32