

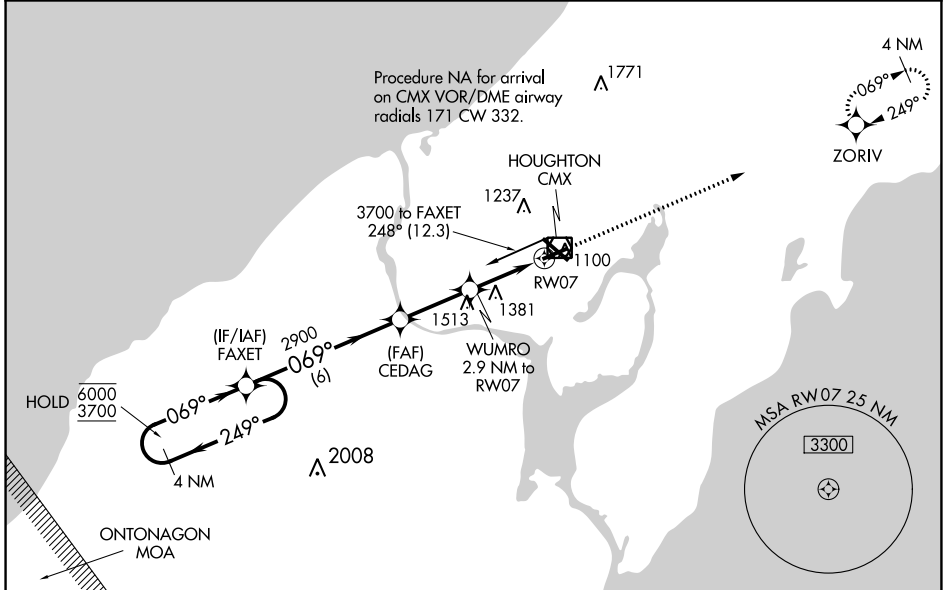
WAAS CH 58233 W07A	APP CRS 069°	Rwy Idg TDZE Apt Elev	5201 1067 1095
--	------------------------	-----------------------------	---

RNAV (GPS) RWY 7

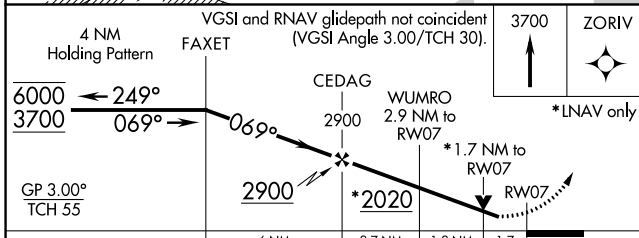
HOUGHTON COUNTY MEML (CMX)

RNP APCH.		MISSED APPROACH: Climb to 3700 direct ZORIV and hold.
⚠ Rwy 7 helicopter visibility reduction below ¼ SM NA. For uncompensated Baro-VNAV systems, LNAV/VNAV NA below -17°C or above 54°C.		

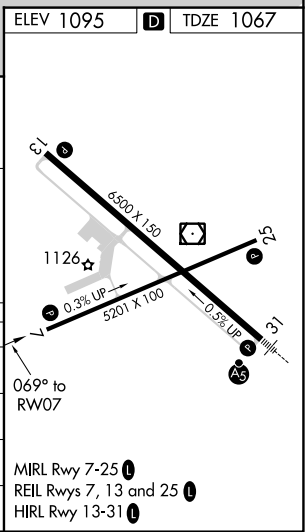
ASOS 125,675	MINNEAPOLIS CENTER 133.55 379.1	UNICOM 122.7 (CTAF) 0
------------------------	---	---------------------------------



ELEV 1095	TDZE 1067
-----------	-----------



CATEGORY	A	B	C	D
LPV DA		1431-1	364 (400-1)	
LNAV/VNAV DA		1598-1½	531 (600-1½)	
LNAV MDA	1640-1	573 (600-1)	1640-1½	573 (600-1½)
CIRCLING	1640-1	545 (600-1)	1700-1¾ 605 (700-1¾)	1820-2¼ 725 (800-2¼)



EC-1, 23 MAR 2023 to 20 APR 2023

EC-1, 23 MAR 2023 to 20 APR 2023

MIRL Rwy 7-25
REIL Rws 7, 13 and 25
HIRL Rwy 13-31