

WILKES-BARRE FOUR ARRIVAL

TETERBORO, NEW JERSEY

NE-2, 23 MAR 2023 to 20 APR 2023

NEW YORK APP CON
 127.6 379.9
 EWR D-ATIS
 115.7 134.825

JAMESTOWN
 114.7 JHW
 Chan 94
 N42°11.32'-W79°07.28'
 L-30, H+10

DMACK
 N41°47.15'
 W77°33.12'

STENT
 N41°40.74'
 W77°09.17'

HOXIE
 N41°51.90'
 W77°51.16'

SLATE RUN
 113.9 SIT
 Chan 86

ELMIRA
 109.65 ULW
 Chan 33 (Y)

WILKES-BARRE
 111.6 LVZ
 Chan 53
 N41°16.37'-W75°41.37'
 Expect FL180

SPARTA
 115.7 SAX
 Chan 104

HUGUENOT
 116.1 HUO
 Chan 108

STILLWATER
 109.6 STW
 Chan 33
 N40°59.75'-W74°52.14'

ESSEX COUNTY
 TETERBORO

MORRISTOWN MUNI

LINDEN

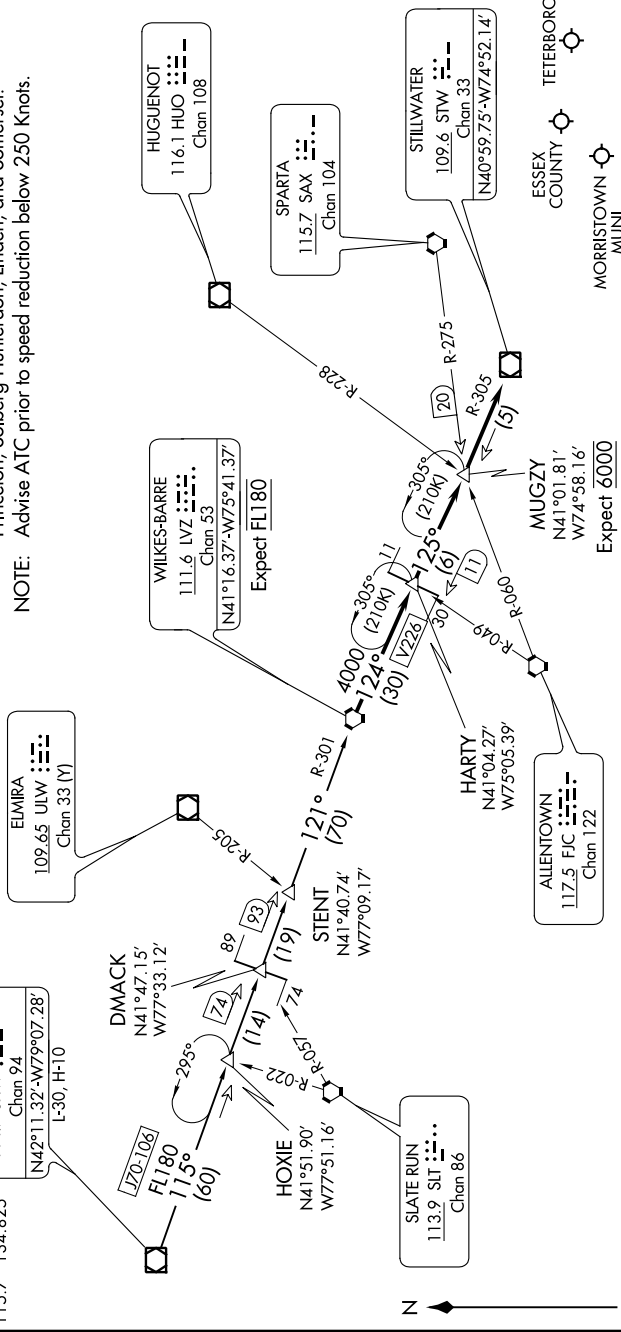
SOMERSET

SOLBERG-HUNTERDON

PRINCETON

NOTE: Chart not to scale.

NOTE: This STAR applicable to all aircraft capable of 250 KIAS or greater landing at Teterboro, Morristown Muni, Essex County, Princeton, Solberg-Hunterdon, Linden, and Somerset.
 NOTE: Advise ATC prior to speed reduction below 250 Knots.



ARRIVAL ROUTE DESCRIPTION

JAMESTOWN TRANSITION (JHW.LVZ4): From over JHW VOR/DME on JHW R-115 and LVZ R-301 to LVZ VORTAC. Thence

. . . . from over LVZ VORTAC, on LVZ R-124 and STW R-305 to STW VOR/DME. Expect radar vectors to final approach course.

WILKES-BARRE FOUR ARRIVAL

TETERBORO, NEW JERSEY

NE-2, 23 MAR 2023 to 20 APR 2023