

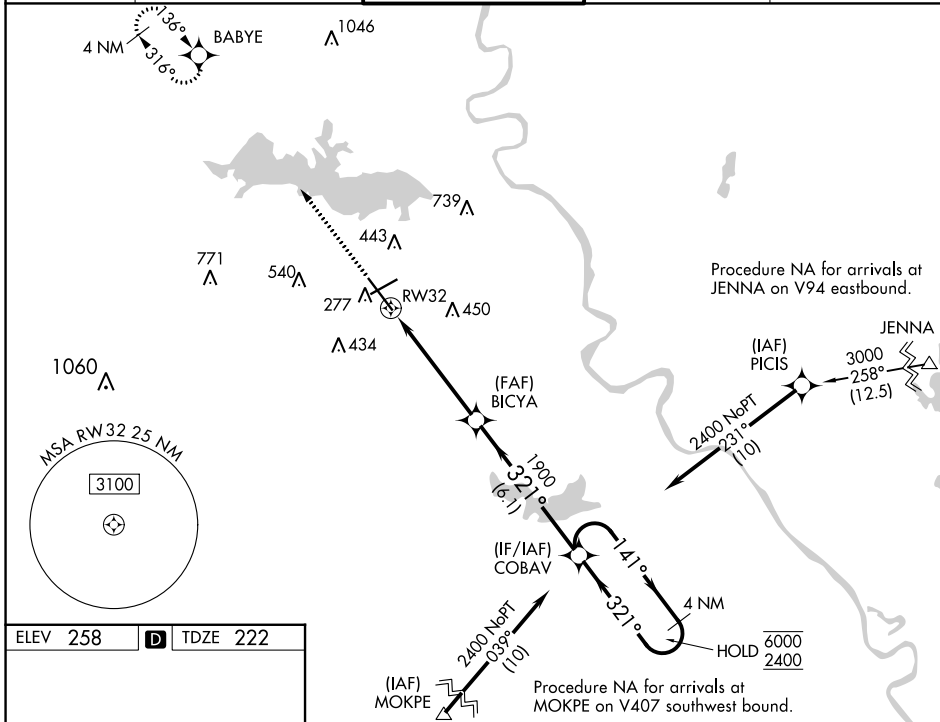
WAAS CH 77913 W32A	APP CRS 321°	Rwy Idg TDZE Apt Elev	7975 222 258
--	------------------------	-----------------------------	---

RNAV (GPS) RWY 32

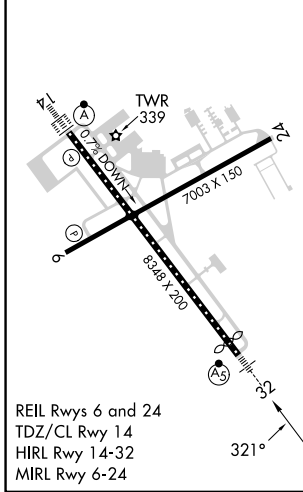
SHREVEPORT RGNL (SHV)

RNP APCH.	<p>▼ Rwy 32 helicopter visibility reduction below RVR 4000 NA. Inop table does not apply to LPV all Cats. For uncompensated Baro-VNAV systems, LNAV/VNAV NA below -6°C or above 54°C. For inop ALS, increase LNAV/VNAV all Cats visibility to RVR 6000 and LNAV Cat A and B visibility to RVR 5500.</p> <p>▲ ASR</p>	MALSR	MISSED APPROACH: Climb to 2600 direct BABYE and hold.
-----------	--	-------	--

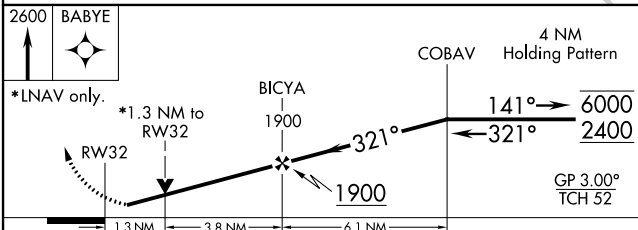
ATIS 128.45	SHREVEPORT APP CON 119.9 335.55	SHREVEPORT TOWER 121.4 236.775	GND CON 121.175 236.775	CLNC DEL 124.65
-----------------------	---	--	-----------------------------------	---------------------------



ELEV 258	D	TDZE 222
----------	----------	----------



REIL Rwy 6 and 24
TDZ/CL Rwy 14
HIRL Rwy 14-32
MIRL Rwy 6-24



CATEGORY	A	B	C	D
LPV DA		422/40	200 (200-¾)	
LNAV/VNAV DA		629/40	407 (400-¾)	
LNAV MDA	680/40	458 (500-¾)	680/45	458 (500-¾)
C CIRCLING	760-1	502 (600-1)	980-2 722 (800-2)	1100-2¾ 842 (900-2¾)

SC-4, 23 MAR 2023 to 20 APR 2023

SC-4, 23 MAR 2023 to 20 APR 2023