

VORTAC GGG <b>112.9</b> Chan <b>76</b>	APP CRS <b>306°</b>	Rwy Idg TDZE Apt Elev	<b>9200</b> <b>354</b> <b>365</b>
--	------------------------	-----------------------------	---

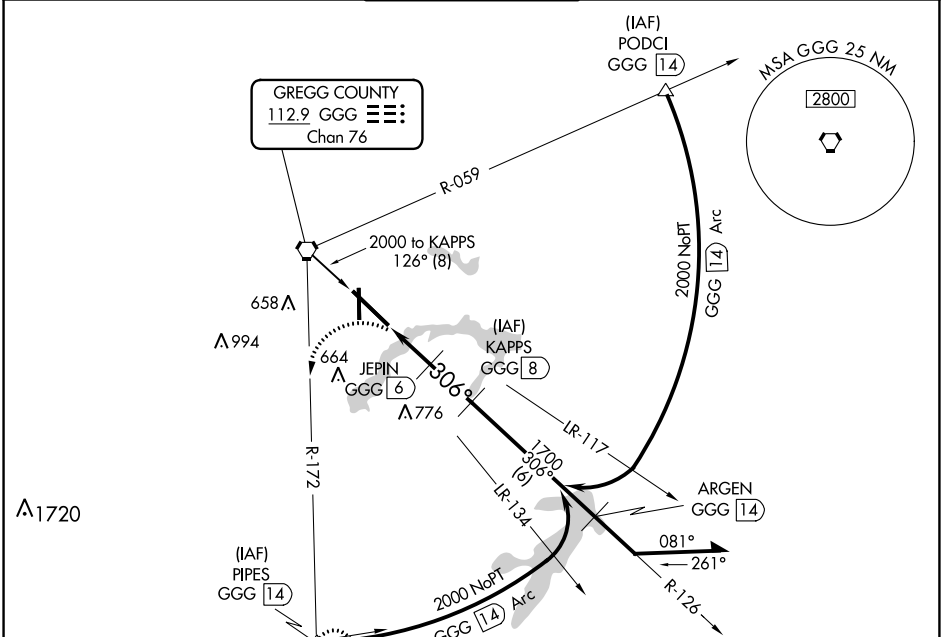
# VOR/DME or TACAN RWY 31

EAST TEXAS RGNL (GGG)

**⚠** When local altimeter setting not received, use Gilmer altimeter setting and increase all MDA 60 feet and increase S-31 Cats C/D/E and Circling Cats C/D/E visibility ½ SM. VDP NA when using Gilmer altimeter setting.

**⚠** MISSED APPROACH: Climb to 800, then climbing left turn to 2500 via GGG R-172 to PIPES INT and hold.

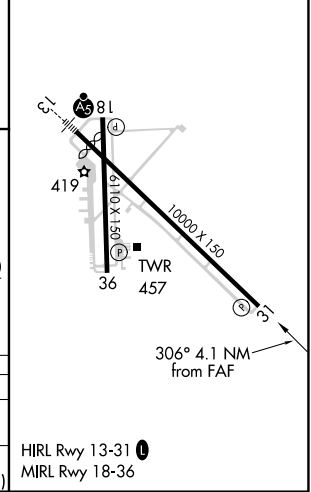
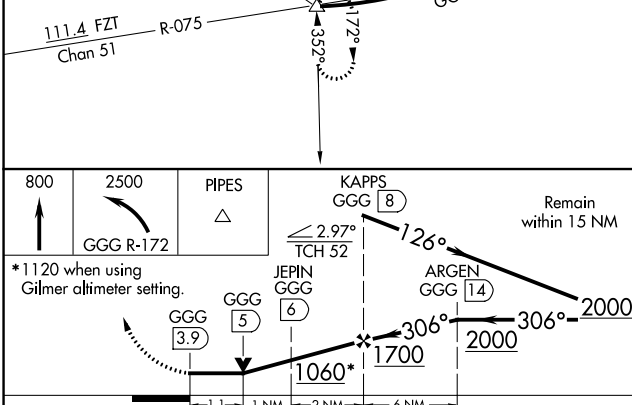
ATIS <b>119.65</b>	LONGVIEW APP CON* <b>128.75 379.15</b>	EASTEX TOWER* <b>119.2 (CTAF) 377.05</b>	GND CON <b>121.6</b>	UNICOM <b>122.95</b>
-----------------------	---	---	-------------------------	-------------------------



SC-2, 23 MAR 2023 to 20 APR 2023

SC-2, 23 MAR 2023 to 20 APR 2023

ELEV 365	<b>D</b>	TDZE 354
----------	----------	----------



CATEGORY	A	B	C	D	E
S-31	780-1 426 (500-1)		780-1 1/8 426 (500-1 1/8)		
CIRCLING	860-1 495 (500-1)		980-1 3/4 614 (700-1 3/4)	1080-2 1/4 714 (800-2 1/4)	1080-2 1/2 715 (800-2 1/2)