


WAAS CH 61100 W13A	APP CRS 131°	Rwy Idg TDZE Apt Elev	9200 358 366
--	------------------------	-----------------------------	---

RNAV (GPS) RWY 13

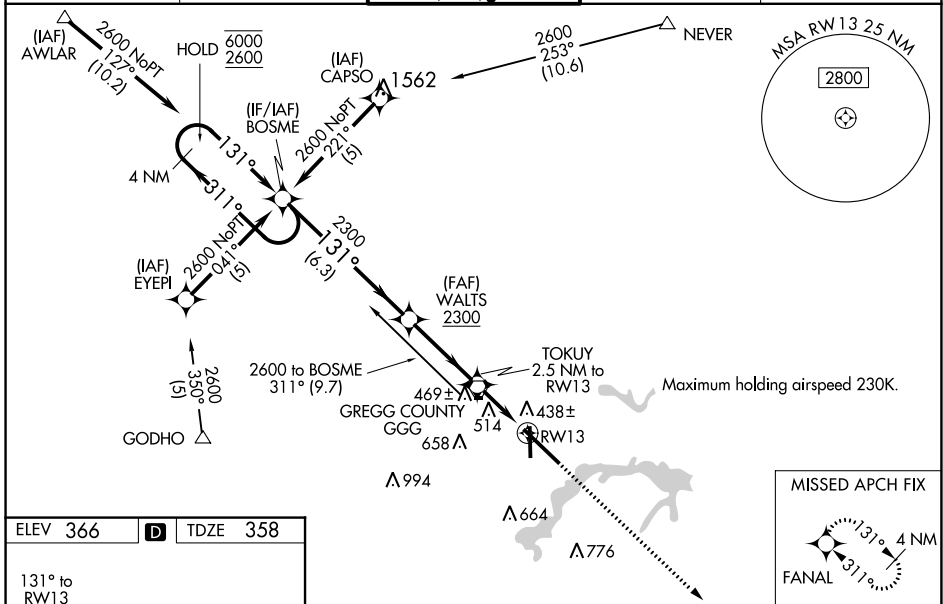
EAST TEXAS RGNL (GGG)

RNP APCH.

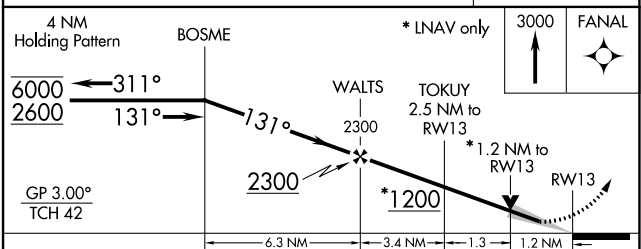
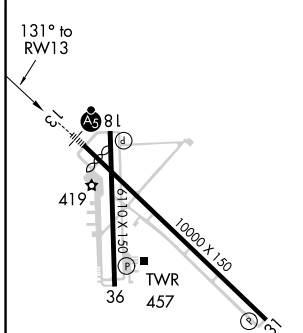
⚠ Baro-VNAV NA when using Gilmer altimeter setting. VDP NA when using Gilmer altimeter setting. For inop ALS, increase LPV Cat E visibility to RVR 4000, LNAV/VNAV all Cats visibility to RVR 5500, LNAV Cat A/B visibility to RVR 5500, and LNAV Cat D/E visibility to 1 1/4 SM. When local altimeter setting not received use Gilmer altimeter setting and increase LPV DA to 671 feet; increase LNAV/VNAV DA to 785 feet, and visibility to RVR 4500; increase all MDA 60 feet, and LNAV Cats C/D visibility to RVR 5000, and Circling Cats C/D/E visibility 1/4 SM. For inop ALS when using Gilmer altimeter setting, increase LPV all Cats visibility to RVR 4500, LNAV/VNAV Cat E visibility to 1 1/4 SM, and LNAV Cats A/B visibility to 5500, and LNAV Cats C/D/E visibility to 1 3/8 SM. For uncompensated Baro-VNAV systems, LNAV/VNAV NA below -15°C or above 54°C.

MALSRL  MISSED APPROACH: Climb to 3000 direct FANAL and hold.

ATIS 119.65	LONGVIEW APP CON* 128.75 379.15	EASTEX TOWER* 119.2 (CTAF) 377.05	GND CON 121.6	UNICOM 122.95
-----------------------	---	---	-------------------------	-------------------------



ELEV 366	D	TDZE 358
----------	----------	----------



CATEGORY	A	B	C	D	E
LPV DA		612/24 254 (300-1/2)			
LNAV/VNAV DA		726/40 368 (400-3/4)			
LNAV MDA	780/24 422 (500-1/2)	780/40 422 (500-3/4)	780/50 422 (500-1)		
CIRCLING	860-1 494 (500-1)	980-1 3/4 614 (700-1 1/4)	1080-2 1/4 714 (800-2 1/4)	1080-2 1/2 714 (800-2 1/2)	

SC-2, 23 MAR 2023 to 20 APR 2023

SC-2, 23 MAR 2023 to 20 APR 2023