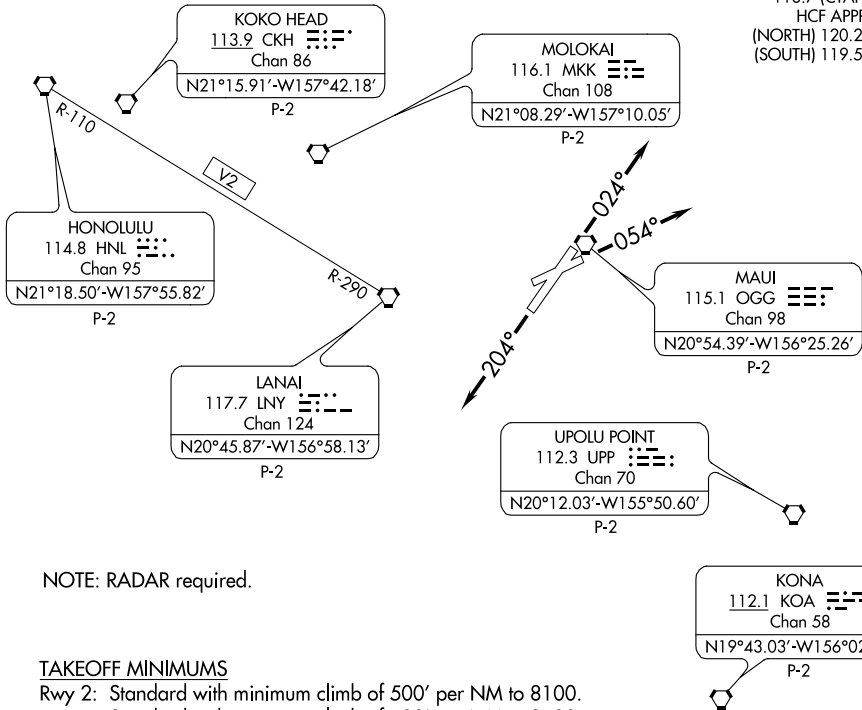


ATIS 128.6
 CLNC DEL
 120.6 290.5
 GND CON
 121.9 279.6
 MAUI TOWER★
 118.7 (CTAF) 279.6
 HCF APPROACH
 (NORTH) 120.2 322.4
 (SOUTH) 119.5 225.4



NOTE: RADAR required.

TAKEOFF MINIMUMS

- Rwy 2: Standard with minimum climb of 500' per NM to 8100.
- Rwy 5: Standard with minimum climb of 500' per NM to 8100.
- Rwy 20: Standard with minimum climb of 490' per NM to 8100.
- Rwy 23: NA - Obstacles.

NOTE: Chart not to scale.

DEPARTURE ROUTE DESCRIPTION

- TAKEOFF RUNWAY 2:** Climb heading 024° (or ATC assigned heading 310° CW 053°); thence. . .
- TAKEOFF RUNWAY 5:** Climbing heading 054° (or ATC assigned heading 307° CW 054°); thence. . .
- TAKEOFF RUNWAY 20:** Climb heading 204° (or ATC assigned heading 169° CW 204°); thence. . .
- TAKEOFF RUNWAY 23:** NA - Obstacles.

. . . expect RADAR vectors to join assigned route. Maintain assigned altitude; expect filed altitude/flight level 5 minutes after departure.

LOST COMMUNICATIONS: If not in contact with departure control 1 minute after departure, climb southbound to join V2 to LNY VORTAC, then on assigned route.