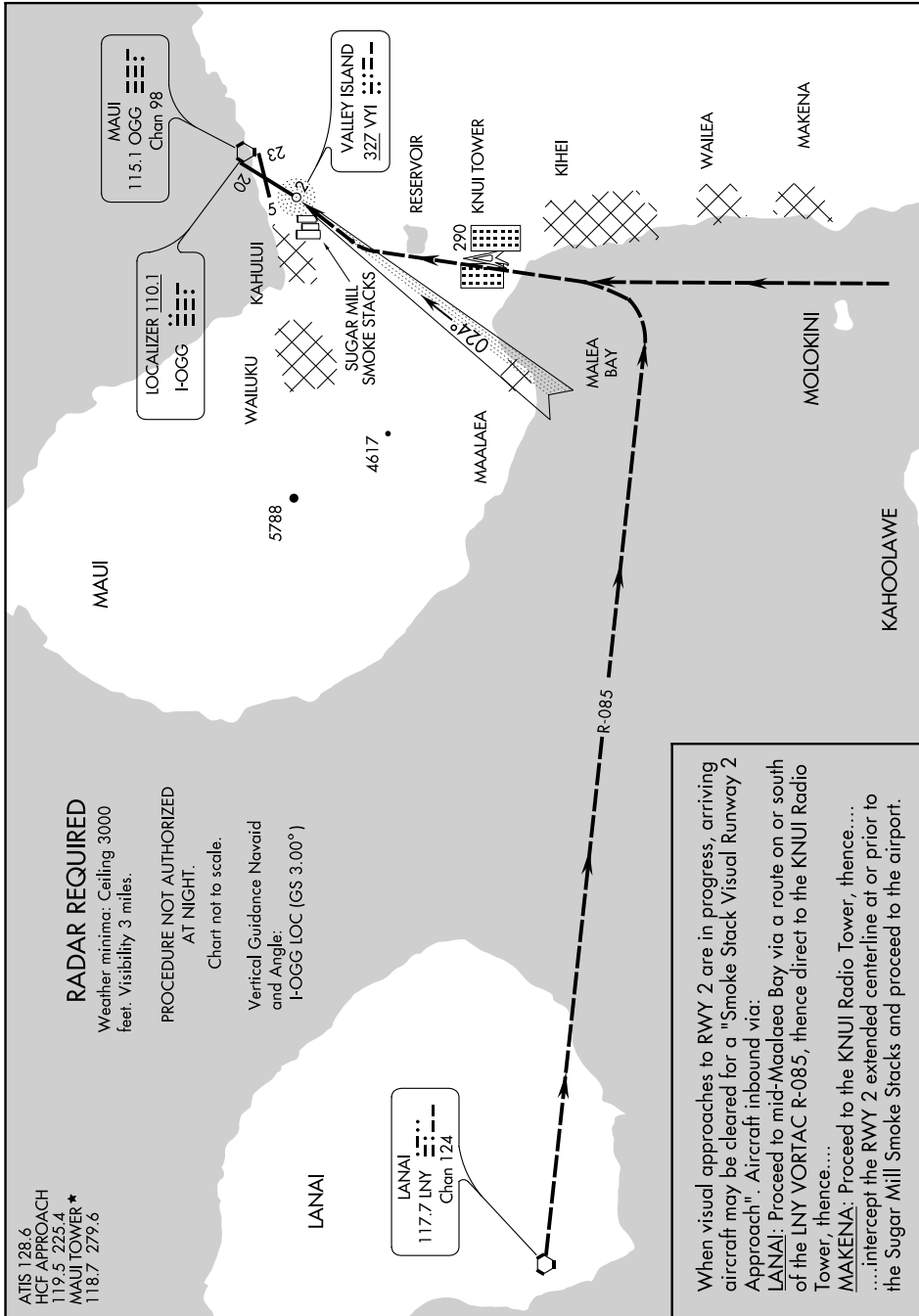


SMOKE STACK VISUAL RWY 2

PAC, 23 FEB 2023 to 20 APR 2023



RADAR REQUIRED

Weather minima: Ceiling 3000 feet. Visibility 3 miles.

PROCEDURE NOT AUTHORIZED AT NIGHT.

Chart not to scale.

Vertical Guidance Navaid and Angle:
I-OGG LOC (GS 3.00°)

ATIS 128.6
HCF APPROACH 119.5 225.4
MAUI TOWER ★ 118.7 279.6

LANAI
117.7 LNY
Chan 124

MAUI
115.1 OGG
Chan 98

VALLEY ISLAND
327 VVI

LOCALIZER 110.1
I-OGG

RESERVOIR
KNUI TOWER
290

SUGAR MILL
SMOKE STACKS

MALEA BAY

MAALAEA

MOLOIKI

When visual approaches to RWY 2 are in progress, arriving aircraft may be cleared for a "Smoke Stack Visual Runway 2 Approach". Aircraft inbound via:

LANAI: Proceed to mid-Maalaea Bay via a route on or south of the LNY VORTAC R-085, thence direct to the KNUJ Radio Tower, thence....

MAKENA: Proceed to the KNUJ Radio Tower, thence....

..... intercept the RWY 2 extended centerline at or prior to the Sugar Mill Smoke Stacks and proceed to the airport.

SMOKE STACK VISUAL RWY 2

20° 54'N-156° 26'W

KAHULUI, HAWAII
KAHULUI (OGG)(PHOG)

PAC, 23 FEB 2023 to 20 APR 2023