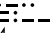
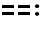


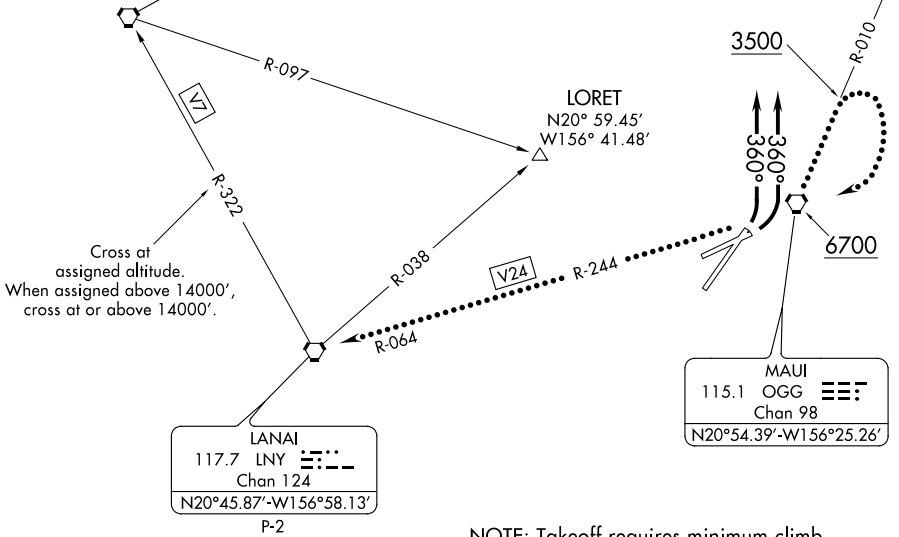
ATIS 128.6
CLNC DEL
120.6 290.5
GND CON
121.9 279.6
MAUI TOWER ★
118.7 (CTAF) 279.6
HCF APPROACH
120.2 322.4

MOLOKAI
116.1 MKK 
Chan 108

LORET
N20° 59.45'
W156° 41.48'

LANAI
117.7 LNY 
Chan 124
N20°45.87'-W156°58.13'

MAUI
115.1 OGG 
Chan 98
N20°54.39'-W156°25.26'



NOTE: Takeoff requires minimum climb of 420' per NM until reaching 8000'.

NOTE: Chart not to scale.

PAC, 23 FEB 2023 to 20 APR 2023

PAC, 23 FEB 2023 to 20 APR 2023



DEPARTURE ROUTE DESCRIPTION

TAKEOFF RUNWAYS 2 AND 5 ONLY: After takeoff, all aircraft fly heading 360°, expect radar vectors west of Maui Island to assigned fix/route. Cross the LNY R-322 at assigned altitude. When assigned above 14000', cross at or above 14000'.

LOST COMMUNICATIONS: If not in contact with Departure Control 1 minute after crossing the shoreline, climb northbound via the OGG R-010 until reaching at least 3500'. Then reverse course to the right direct OGG VORTAC. Then via V24 to LNY VORTAC. Cross OGG VORTAC at or above 6700'.